



SZABO SCANDIC

Part of Europa Biosite

Produktinformation



Forschungsprodukte & Biochemikalien



Zellkultur & Verbrauchsmaterial



Diagnostik & molekulare Diagnostik



Laborgeräte & Service

Weitere Information auf den folgenden Seiten!
See the following pages for more information!



Lieferung & Zahlungsart

siehe unsere [Liefer- und Versandbedingungen](#)

Zuschläge

- Mindermengenzuschlag
- Trockeneiszuschlag
- Gefahrgutzuschlag
- Expressversand

SZABO-SCANDIC HandelsgmbH

Quellenstraße 110, A-1100 Wien

T. +43(0)1 489 3961-0

F. +43(0)1 489 3961-7

mail@szabo-scandic.com

www.szabo-scandic.com

[linkedin.com/company/szaboscandic](https://www.linkedin.com/company/szaboscandic) 

SCARB2 monoclonal antibody (M01), clone 1C8

Catalog # : H00000950-M01

規格 : [100 ug]

[List All](#)

Specification

Product Description:	Mouse monoclonal antibody raised against a partial recombinant SCARB2.
Immunogen:	SCARB2 (NP_005497, 339 a.a. ~ 437 a.a) partial recombinant protein with GST tag. MW of the GST tag alone is 26 KDa.
Sequence:	FPHFYQADERFVSAIEGMHPNQEDHETFVDINPLTGILKAAKRFQINIYVK KLDDFVETGDIRTMVFPVMYLNEVHIDKETASRLKSMINTLLITN
Host:	Mouse
Reactivity:	Human
Isotype:	IgG2a Kappa
Quality Control Testing:	Antibody Reactive Against Recombinant Protein.
Storage Buffer:	In 1x PBS, pH 7.4

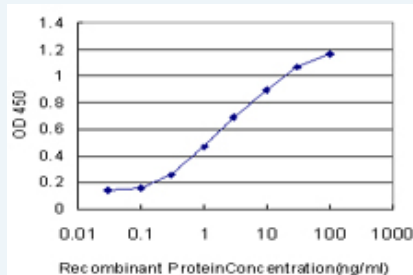
Storage Instruction: Store at -20°C or lower. Aliquot to avoid repeated freezing and thawing.

MSDS: [Download](#)

Datasheet: [Download](#)

Applications

Sandwich ELISA (Recombinant protein)



Detection limit for recombinant GST tagged SCARB2 is approximately 0.1 ng/ml as a capture antibody.

[Protocol Download](#)

ELISA

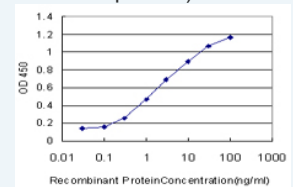
Gene Information

Entrez GeneID: [950](#)

GeneBank Accession#: [NM_005506](#)

Application Image

Sandwich ELISA (Recombinant protein)



[enlarge](#)

ELISA

Protein Accession#: [NP_005497](#)

Gene Name: SCARB2

Gene Alias: AMRF,CD36L2,HLGP85,LIMPII,SR-BII

Gene Description: scavenger receptor class B, member 2

Omim ID: [602257](#)

Gene Ontology: [Hyperlink](#)

Gene Summary: The protein encoded by this gene is a type III glycoprotein that is located primarily in limiting membranes of lysosomes and endosomes. Studies of the similar protein in mice and rat suggested that this protein may participate in membrane transportation and the reorganization of endosomal/lysosomal compartment. Deficiency of the similar protein in mice was reported to impair cell membrane transport processes and cause pelvic junction obstruction, deafness, and peripheral neuropathy. [provided by RefSeq]

Other Designations: 85 kDa lysosomal sialoglycoprotein scavenger receptor class B, member 2,CD36 antigen (collagen type I receptor, thrombospondin receptor)-like 2 (lysosomal integral membrane protein II),lysosomal integral membrane protein II

Gene Pathway

[Lysosome](#)

Related Disease

[Cardiovascular Diseases](#) [Diabetes Mellitus, Type 2](#) [Drug Toxicity](#) [Edema](#) [Hypercholesterolemia](#)