



SZABO SCANDIC

Part of Europa Biosite

Produktinformation



Forschungsprodukte & Biochemikalien



Zellkultur & Verbrauchsmaterial



Diagnostik & molekulare Diagnostik



Laborgeräte & Service

Weitere Information auf den folgenden Seiten!
See the following pages for more information!



Lieferung & Zahlungsart

siehe unsere [Liefer- und Versandbedingungen](#)

Zuschläge

- Mindermengenzuschlag
- Trockeneiszuschlag
- Gefahrgutzuschlag
- Expressversand

SZABO-SCANDIC HandelsgmbH

Quellenstraße 110, A-1100 Wien

T. +43(0)1 489 3961-0

F. +43(0)1 489 3961-7

mail@szabo-scandic.com

www.szabo-scandic.com

[linkedin.com/company/szaboscandic](https://www.linkedin.com/company/szaboscandic) 

ENTPD1 purified MaxPab mouse polyclonal antibody (B01P) MaxPab®

Catalog # : H00000953-B01P

規格 : [50 ug]

[List All](#)

Specification

Product Description: Mouse polyclonal antibody raised against a full-length human ENTPD1 protein.

Immunogen: ENTPD1 (NP_001767.3, 1 a.a. ~ 510 a.a) full-length human protein.

Sequence:
 MEDTKESNVKTFCSKNLAILGFSSIIAVIALLAVGLTQNKALPENVKYGIVL
 DAGSSHTSLYIKWPAEKENDTGVVHQVEECRVKGPISKFVQKVNEIGI
 YLTDCMERAREVIPRSQHQETPVYLGATAGMRLLRMESEELADRVLDVV
 ERSLSNYPDFDQGARITGQEEGAYGWITINYLLGKFQKTRWFSIVPYET
 NNQETFGALDLGGASTQVTFVPQNTIESPDNALQFRLYGKDYNVYTHS
 FLCYGKDQALWQKLAKDIQVASNEILRDPCFHPGYKVVNVSDLYKTPC
 TKRFEMTLPFQQFEIQGIGNYQQCHQSILELFNTSYCPYSQCAFNGIFLP
 PLQGDFGAFSAFYFVMKFLNLTSEKVSQEKVTEMMKKFCAQPWEEIKTS
 YAGVKEKYLSEYCFSGTYILSLLQGYHFTADSWEHIFIGKIQGS DAGW
 TLGYMLNLTNMPAEQPLSTPLSHSTYVFLMVLFSVLVFTVAIIGLLIFHKPS
 YFWKDMV

Host: Mouse

Reactivity: Human

Quality Control Testing: Antibody reactive against mammalian transfected lysate.

Storage Buffer: In 1x PBS, pH 7.4

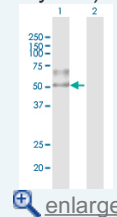
Storage Instruction: Store at -20°C or lower. Aliquot to avoid repeated freezing and thawing.

MSDS: [Download](#)

Datasheet: [Download](#)

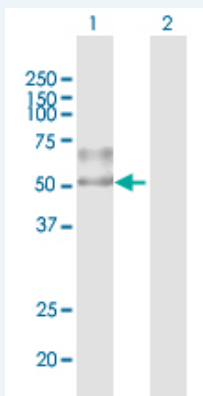
Application Image

Western Blot (Transfected lysate)



Applications

Western Blot (Transfected lysate)



Western Blot analysis of ENTPD1 expression in transfected 293T cell line (H00000953-T01) by ENTPD1 MaxPab polyclonal antibody.

Lane 1: ENTPD1 transfected lysate(56.1 KDa).

Lane 2: Non-transfected lysate.

 Protocol Download

Gene Information

Entrez GeneID: [953](#)

**GeneBank
Accession#:** [NM_001776.3](#)

**Protein
Accession#:** [NP_001767.3](#)

Gene Name: ENTPD1

Gene Alias: ATPDase, CD39, DKFZp686D194, DKFZp686I093, FLJ40921, FLJ40959, NTPDase-1

**Gene
Description:** ectonucleoside triphosphate diphosphohydrolase 1

Omim ID: [601752](#)

Gene Ontology: [Hyperlink](#)

**Other
Designations:** CD39 antigen, OTTHUMP00000020161, ecto-ATP diphosphohydrolase, ecto-apyrase, lymphoid cell activation antigen

Gene Pathway

[Purine metabolism](#) [Pyrimidine metabolism](#)

Related Disease

[Alzheimer Disease](#) [Diabetes Mellitus, Type 2](#) [Diabetic Nephropathies](#)
[Disease Models, Animal](#) [Genetic Predisposition to Disease](#) [Kidney Failure, Chronic](#)
[Tobacco Use Disorder](#)

[服務條款](#) | [隱私權政策](#) | [著作及商標](#) | [網站地圖](#)

©2016 亞諾法生技股份有限公司 Abnova Corporation. 版權所有.