



SZABO SCANDIC

Part of Europa Biosite

Produktinformation



Forschungsprodukte & Biochemikalien



Zellkultur & Verbrauchsmaterial



Diagnostik & molekulare Diagnostik



Laborgeräte & Service

Weitere Information auf den folgenden Seiten!
See the following pages for more information!



Lieferung & Zahlungsart

siehe unsere [Liefer- und Versandbedingungen](#)

Zuschläge

- Mindermengenzuschlag
- Trockeneiszuschlag
- Gefahrgutzuschlag
- Expressversand

SZABO-SCANDIC HandelsgmbH

Quellenstraße 110, A-1100 Wien

T. +43(0)1 489 3961-0

F. +43(0)1 489 3961-7

mail@szabo-scandic.com

www.szabo-scandic.com

[linkedin.com/company/szaboscandic](https://www.linkedin.com/company/szaboscandic) 

ENTPD1 293T Cell Transient Overexpression Lysate(Denatured)

Catalog # : H00000953-T01

規格 : [100 uL]

List All

Specification

Transfected Cell Line: 293T

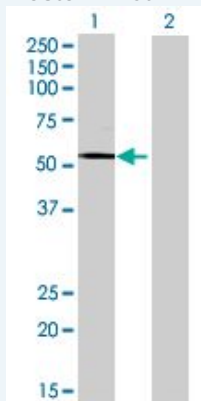
Plasmid: pCMV-ENTPD1 full-length

Host: Human

Theoretical MW (kDa): 58

Quality Control Testing: Transient overexpression cell lysate was tested with Anti-ENTPD1 antibody ([H00000953-B01](#)) by Western Blots.

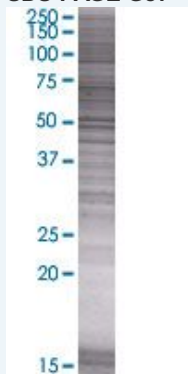
Western Blot



Lane 1: ENTPD1 transfected lysate (58 KDa)

Lane 2: Non-transfected lysate.

SDS-PAGE Gel



ENTPD1 transfected lysate.

Storage Buffer: 1X Sample Buffer (50 mM Tris-HCl, 2% SDS, 10% glycerol, 300 mM 2-mercaptoethanol, 0.01% Bromophenol blue)

Storage Instruction: Store at -80°C. Aliquot to avoid repeated freezing and thawing.

MSDS: [Download](#)

Applications

Application Image

Western Blot

Western Blot

Gene Information

Entrez GeneID: [953](#)

GeneBank Accession#: [NM_001776.3](#)

Protein Accession#: [NP_001767.3](#)

Gene Name: ENTPD1

Gene Alias: ATPDase, CD39, DKFZp686D194, DKFZp686I093, FLJ40921, FLJ40959, NTPDase-1

Gene Description: ectonucleoside triphosphate diphosphohydrolase 1

Omim ID: [601752](#)

Gene Ontology: [Hyperlink](#)

Other Designations: CD39 antigen, OTTHUMP00000020161, ecto-ATP diphosphohydrolase, ecto-apyrase, lymphoid cell activation antigen

Gene Pathway

[Purine metabolism](#) [Pyrimidine metabolism](#)

Related Disease

[Alzheimer Disease](#) [Diabetes Mellitus, Type 2](#) [Diabetic Nephropathies](#) [Disease Models, Animal](#) [Genetic Predisposition to Disease](#) [Kidney Failure, Chronic](#) [Tobacco Use Disorder](#)

[服務條款](#) | [隱私權政策](#) | [著作及商標](#) | [網站地圖](#)

©2016 亞諾法生技股份有限公司 Abnova Corporation. 版權所有.