



SZABO SCANDIC

Part of Europa Biosite

Produktinformation



Forschungsprodukte & Biochemikalien



Zellkultur & Verbrauchsmaterial



Diagnostik & molekulare Diagnostik



Laborgeräte & Service

Weitere Information auf den folgenden Seiten!
See the following pages for more information!



Lieferung & Zahlungsart

siehe unsere [Liefer- und Versandbedingungen](#)

Zuschläge

- Mindermengenzuschlag
- Trockeneiszuschlag
- Gefahrgutzuschlag
- Expressversand

SZABO-SCANDIC HandelsgmbH

Quellenstraße 110, A-1100 Wien

T. +43(0)1 489 3961-0

F. +43(0)1 489 3961-7

mail@szabo-scandic.com

www.szabo-scandic.com

[linkedin.com/company/szaboscandic](https://www.linkedin.com/company/szaboscandic)

ENTPD6 monoclonal antibody (M03), clone 2D10

Catalog # : H00000955-M03

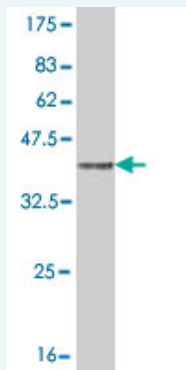
規格 : [100 ug]

[List All](#)

Specification

Product Description:	Mouse monoclonal antibody raised against a partial recombinant ENTPD6.
Immunogen:	ENTPD6 (NP_001238, 386 a.a. ~ 484 a.a) partial recombinant protein with GST tag. MW of the GST tag alone is 26 KDa.
Sequence:	YDLAAGVGLIDAEKGGSLVGDIFEIAAKYVCRTLETQPQSSPFSCMDLT YVSLLLQEFGFPRSKVLKLRKIDNVETSWALGAIFHYIDSLNRQKSPAS
Host:	Mouse
Reactivity:	Human
Isotype:	IgG2a Kappa

Quality Control Testing: Antibody Reactive Against Recombinant Protein.



Western Blot detection against Immunogen (36.63 KDa) .

Storage Buffer: In 1x PBS, pH 7.4

Storage Instruction: Store at -20°C or lower. Aliquot to avoid repeated freezing and thawing.

MSDS: [Download](#)

Datasheet: [Download](#)

Applications

Western Blot (Recombinant protein)

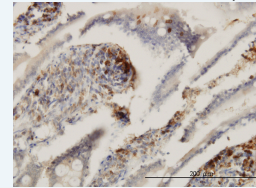
[Protocol Download](#)

Immunohistochemistry (Formalin/PFA-fixed paraffin-embedded sections)

Application Image

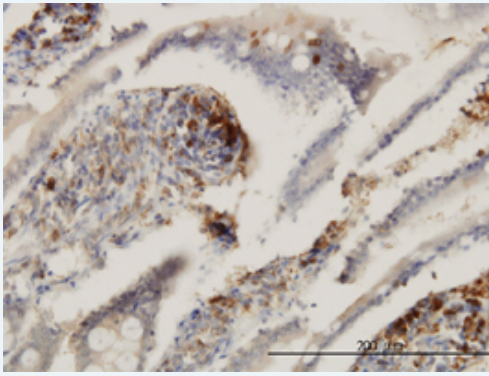
Western Blot (Recombinant protein)

Immunohistochemistry (Formalin/PFA-fixed paraffin-embedded sections)



[enlarge](#)

ELISA



[enlarge this image](#)

Immunoperoxidase of monoclonal antibody to ENTPD6 on formalin-fixed paraffin-embedded human small Intestine. [antibody concentration 3 ug/ml]

[Protocol Download](#)

ELISA

Gene Information

Entrez GeneID: [955](#)

**GeneBank
Accession#:** [NM_001247](#)

**Protein
Accession#:** [NP_001238](#)

Gene Name: ENTPD6

Gene Alias: CD39L2,DKFZp781G2277,DKFZp781K21102,FLJ36711,IL-6SAG,IL6ST2,NTPDase-6,dJ738P15.3

**Gene
Description:** ectonucleoside triphosphate diphosphohydrolase 6 (putative function)

Omim ID: [603160](#)

Gene Ontology: [Hyperlink](#)

Gene Summary: ENTPD6 is similar to E-type nucleotidases (NTPases). NTPases, such as CD39, mediate catabolism of extracellular nucleotides. ENTPD6 contains 4 apyrase-conserved regions which is characteristic of NTPases. Alternatively spliced transcript variants encoding different isoforms have been found for this gene. [provided by RefSeq]

**Other
Designations:** CD39-like 2,OTTHUMP00000030487,ectonucleoside triphosphate diphosphohydrolase 6,interleukin 6 signal transducer-2

Gene Pathway

[Purine metabolism](#) [Pyrimidine metabolism](#)

Related Disease

[Cardiovascular Diseases](#) [Diabetes Mellitus, Type 2](#) [Edema](#)