



# SZABO SCANDIC

Part of Europa Biosite

## Produktinformation



Forschungsprodukte & Biochemikalien



Zellkultur & Verbrauchsmaterial



Diagnostik & molekulare Diagnostik



Laborgeräte & Service

Weitere Information auf den folgenden Seiten!  
See the following pages for more information!



### Lieferung & Zahlungsart

siehe unsere [Liefer- und Versandbedingungen](#)

### Zuschläge

- Mindermengenzuschlag
- Trockeneiszuschlag
- Gefahrgutzuschlag
- Expressversand

### SZABO-SCANDIC HandelsgmbH

Quellenstraße 110, A-1100 Wien

T. +43(0)1 489 3961-0

F. +43(0)1 489 3961-7

[mail@szabo-scandic.com](mailto:mail@szabo-scandic.com)

[www.szabo-scandic.com](http://www.szabo-scandic.com)

[linkedin.com/company/szaboscandic](https://www.linkedin.com/company/szaboscandic) 

## ENTPD3 polyclonal antibody (A01)

Catalog # : H00000956-A01

規格 : [ 50 uL ]

List All

### Specification

**Product Description:** Mouse polyclonal antibody raised against a partial recombinant ENTPD3.

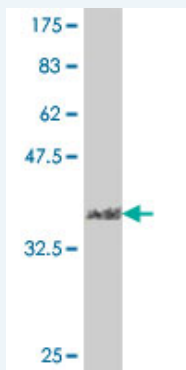
**Immunogen:** ENTPD3 (NP\_001239, 107 a.a. ~ 216 a.a) partial recombinant protein with GST tag.

**Sequence:** QDVPRAFECECMQKVKGGQVPSHLHGSTPIHLGATAGMRLRLQNETAAN  
EVLESIQSYFKSQPFDFRGAQIISGQEEGVYGWITANYLMGNFLEKNLWH  
MWWHPHGVETTG

**Host:** Mouse

**Reactivity:** Human

**Quality Control Testing:** Antibody Reactive Against Recombinant Protein.



Western Blot detection against Immunogen (38.21 KDa) .

**Storage Buffer:** 50 % glycerol

**Storage Instruction:** Store at -20°C or lower. Aliquot to avoid repeated freezing and thawing.

**MSDS:** [Download](#)

**Datasheet:** [Download](#)

### Applications

**Western Blot (Recombinant protein)**

[Protocol Download](#)

**ELISA**

### Gene Information

**Entrez GeneID:** [956](#)

**GeneBank Accession#:** [NM\\_001248](#)

### Application Image

Western Blot (Recombinant protein)

ELISA

**Protein Accession#:** [NP\\_001239](#)

**Gene Name:** ENTPD3

**Gene Alias:** CD39L3,FLJ93839,HB6,NTPDase-3

**Gene Description:** ectonucleoside triphosphate diphosphohydrolase 3

**Omim ID:** [603161](#)

**Gene Ontology:** [Hyperlink](#)

**Gene Summary:** ENTPD3 is similar to E-type nucleotidases (NTPases). NTPases, such as CD39, mediate catabolism of extracellular nucleotides. ENTPD3 contains 4 apyrase-conserved regions which is characteristic of NTPases. [provided by RefSeq]

**Other Designations:** CD39-like 3

#### Gene Pathway

[Purine metabolism](#) [Pyrimidine metabolism](#)

[服務條款](#) | [隱私權政策](#) | [著作及商標](#) | [網站地圖](#)

©2016 亞諾法生技股份有限公司 Abnova Corporation. 版權所有.