



# SZABO SCANDIC

Part of Europa Biosite

## Produktinformation



Forschungsprodukte & Biochemikalien



Zellkultur & Verbrauchsmaterial



Diagnostik & molekulare Diagnostik



Laborgeräte & Service

Weitere Information auf den folgenden Seiten!  
See the following pages for more information!



### Lieferung & Zahlungsart

siehe unsere [Liefer- und Versandbedingungen](#)

### Zuschläge

- Mindermengenzuschlag
- Trockeneiszuschlag
- Gefahrgutzuschlag
- Expressversand

### SZABO-SCANDIC HandelsgmbH

Quellenstraße 110, A-1100 Wien

T. +43(0)1 489 3961-0

F. +43(0)1 489 3961-7

[mail@szabo-scandic.com](mailto:mail@szabo-scandic.com)

[www.szabo-scandic.com](http://www.szabo-scandic.com)

[linkedin.com/company/szaboscandic](https://www.linkedin.com/company/szaboscandic) 

# ENTPD3 purified MaxPab mouse polyclonal antibody (B01P) MaxPab®

Catalog # : H00000956-B01P

規格 : [ 50 ug ]

[List All](#)

## Specification

**Product Description:** Mouse polyclonal antibody raised against a full-length human ENTPD3 protein.

**Immunogen:** ENTPD3 (AAH29869.1, 1 a.a. ~ 452 a.a) full-length human protein.

**Sequence:**  
 MFTVLTRQPCEQAGLKALYRTPTVIALVLLVSIVLVSITVIQIHKQEVLP  
 PGLKYGIVLDAGSSRTTVYVYQWPAEKENNTGWVSQTFKCSVKGSGISS  
 YGNPQDVPRAFEECMQKVKGQVPSHLHGSTPIHLGATAGMRLRLQN  
 ETAANEVLESIQSYFKSQPFDFRGAQISGQEEGVYGWITANYLMGNFLE  
 KNLWHMMVHPHGVETT GALDLGGASTQISFVAGEKMDLNTSDIMQVSL  
 YGYVYTYHSFQCYGRNEAEKKFLAMLLQNSPTKNHLTNPCYPRDISYS  
 FTMGHVFDLCTVDQRPESYNPNDVITFEGTGDPSLCKEKVASIFDFKA  
 CHDQETCSFDGVYQPKIKGPFVAFAGFYTASALNLSGSFSLDTFNSST  
 WNFCSQNWSQLPLLLPKFDEVYARSYCF SANYIYHLFVNGYKFTETWP  
 QIHFEKEE

**Host:** Mouse

**Reactivity:** Human

**Quality Control Testing:** Antibody reactive against mammalian transfected lysate.

**Storage Buffer:** In 1x PBS, pH 7.4

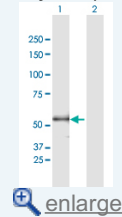
**Storage Instruction:** Store at -20°C or lower. Aliquot to avoid repeated freezing and thawing.

**MSDS:**  [Download](#)

**Datasheet:**  [Download](#)

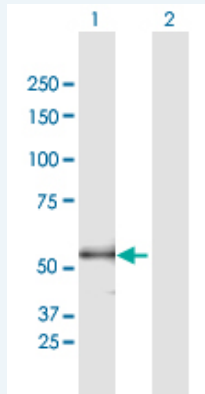
## Application Image

Western Blot (Transfected lysate)



## Applications

Western Blot (Transfected lysate)



Western Blot analysis of ENTPD3 expression in transfected 293T cell line (H00000956-T01) by ENTPD3 MaxPab polyclonal antibody.

Lane 1: ENTPD3 transfected lysate(49.72 KDa).  
 Lane 2: Non-transfected lysate.

---

### Gene Information

---

**Entrez GeneID:** [956](#)

---

**GeneBank  
Accession#:** [BC029869.1](#)

---

**Protein  
Accession#:** [AAH29869.1](#)

---

**Gene Name:** ENTPD3

---

**Gene Alias:** CD39L3,FLJ93839,HB6,NTPDase-3

---

**Gene  
Description:** ectonucleoside triphosphate diphosphohydrolase 3

---

**Omim ID:** [603161](#)

---

**Gene Ontology:** [Hyperlink](#)

---

**Gene Summary:** ENTPD3 is similar to E-type nucleotidases (NTPases). NTPases, such as CD39, mediate catabolism of extracellular nucleotides. ENTPD3 contains 4 apyrase-conserved regions which is characteristic of NTPases. [provided by RefSeq]

---

**Other  
Designations:** CD39-like 3

---

### Gene Pathway

---

[Purine metabolism](#) [Pyrimidine metabolism](#)