



SZABO SCANDIC

Part of Europa Biosite

Produktinformation



Forschungsprodukte & Biochemikalien



Zellkultur & Verbrauchsmaterial



Diagnostik & molekulare Diagnostik



Laborgeräte & Service

Weitere Information auf den folgenden Seiten!
See the following pages for more information!



Lieferung & Zahlungsart

siehe unsere [Liefer- und Versandbedingungen](#)

Zuschläge

- Mindermengenzuschlag
- Trockeneiszuschlag
- Gefahrgutzuschlag
- Expressversand

SZABO-SCANDIC HandelsgmbH

Quellenstraße 110, A-1100 Wien

T. +43(0)1 489 3961-0

F. +43(0)1 489 3961-7

mail@szabo-scandic.com

www.szabo-scandic.com

[linkedin.com/company/szaboscandic](https://www.linkedin.com/company/szaboscandic) 

ENTPD3 purified MaxPab rabbit polyclonal antibody (D01P) MaxPab®

Catalog # : H00000956-D01P

規格 : [100 ug]

[List All](#)

Specification

Product Description: Rabbit polyclonal antibody raised against a full-length human ENTPD3 protein.

Immunogen: ENTPD3 (AAH29869.1, 1 a.a. ~ 452 a.a) full-length human protein.

Sequence:
MFTVLTRQPCEQAGLKALYRTPTVIALVLLVSIVLVSITVIQIHKQEVLP
PGLKYGIVLDAGSSRTTVYVYQWPAEKENNTGWSQTFKCSVKGSGISS
YGNNPQDVPRAFEECMQKVKGQVPSHLHGSTPIHLGATAGMRLRLQN
ETAANEVLESIQSYFKSQPFDFRGAQISGQEEGVYGWITANYLMGNFLE
KNLWHMMVHPHGVETTGALDLGGASTQISFVAGEKMDLNTSDIMQVSL
YGYVYTYTHSFQCYGRNEAEKKFLAMLLQNSPTKNHLTNPCYPRDYSIS
FTMGHVFDLSLCTVDQRPESYNPNDVITFEFGTGDPSLCKEKVASIFDFKA
CHDQETCSFDGVYQPKIKGPFVAFAGFYTASALNLSGSFSLDTFNSST
WNFCSQNWSQLPLLLPKFDEVYARSYCFSANIYHLFVNGYKFTETWP
QIHFEKEE

Host: Rabbit

Reactivity: Human, Mouse

Quality Control Testing: Antibody reactive against mammalian transfected lysate.

Storage Buffer: In 1x PBS, pH 7.4

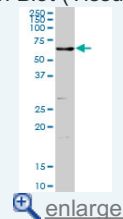
Storage Instruction: Store at -20°C or lower. Aliquot to avoid repeated freezing and thawing.

MSDS:  [Download](#)

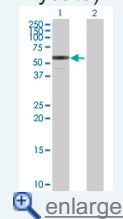
Datasheet:  [Download](#)

Application Image

Western Blot (Tissue lysate)

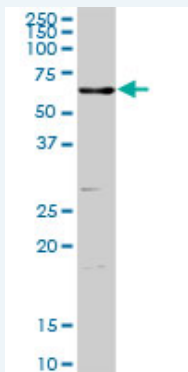


Western Blot (Transfected lysate)




Applications

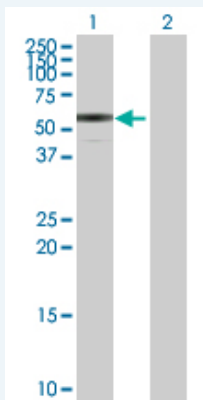
Western Blot (Tissue lysate)



ENTPD3 MaxPab rabbit polyclonal antibody. Western Blot analysis of ENTPD3 expression in mouse testis.


 [Protocol Download](#)

Western Blot (Transfected lysate)



Western Blot analysis of ENTPD3 expression in transfected 293T cell line ([H00000956-T01](#)) by ENTPD3 MaxPab polyclonal antibody.

Lane 1: ENTPD3 transfected lysate(50.70 KDa).
Lane 2: Non-transfected lysate.

 [Protocol Download](#)

Gene Information

Entrez GeneID: [956](#)

GeneBank Accession#: [BC029869.1](#)

Protein Accession#: [AAH29869.1](#)

Gene Name: ENTPD3

Gene Alias: CD39L3,FLJ93839,HB6,NTPDase-3

Gene Description: ectonucleoside triphosphate diphosphohydrolase 3

Omim ID: [603161](#)

Gene Ontology: [Hyperlink](#)

Gene Summary: ENTPD3 is similar to E-type nucleotidases (NTPases). NTPases, such as CD39, mediate catabolism of extracellular nucleotides. ENTPD3 contains 4 apyrase-conserved regions which is characteristic of NTPases. [provided by RefSeq]

Other Designations: CD39-like 3

Gene Pathway

[Purine metabolism](#) [Pyrimidine metabolism](#)