



SZABO SCANDIC

Part of Europa Biosite

Produktinformation



Forschungsprodukte & Biochemikalien



Zellkultur & Verbrauchsmaterial



Diagnostik & molekulare Diagnostik



Laborgeräte & Service

Weitere Information auf den folgenden Seiten!
See the following pages for more information!



Lieferung & Zahlungsart

siehe unsere [Liefer- und Versandbedingungen](#)

Zuschläge

- Mindermengenzuschlag
- Trockeneiszuschlag
- Gefahrgutzuschlag
- Expressversand

SZABO-SCANDIC HandelsgmbH

Quellenstraße 110, A-1100 Wien

T. +43(0)1 489 3961-0

F. +43(0)1 489 3961-7

mail@szabo-scandic.com

www.szabo-scandic.com

[linkedin.com/company/szaboscandic](https://www.linkedin.com/company/szaboscandic) 

ENTPD5 polyclonal antibody (A01)

Catalog # : H00000957-A01

規格 : [50 uL]

List All

Specification

Product Description: Mouse polyclonal antibody raised against a partial recombinant ENTPD5.

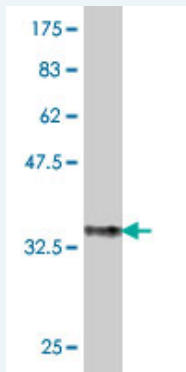
Immunogen: ENTPD5 (NP_001240, 319 a.a. ~ 400 a.a) partial recombinant protein with GST tag.

Sequence: EEVQRGSFYAFSYYYDRAVDTDMIDYEKGGILKVEDFERKAREVCDNLE
NFTSGSPFLCMDLSYITALLKDGFGFADSTVLQ

Host: Mouse

Reactivity: Human

Quality Control Testing: Antibody Reactive Against Recombinant Protein.



Western Blot detection against Immunogen (35.13 kDa) .

Storage Buffer: 50 % glycerol

Storage Instruction: Store at -20°C or lower. Aliquot to avoid repeated freezing and thawing.

MSDS: [Download](#)

Datasheet: [Download](#)

Applications

Western Blot (Recombinant protein)

[Protocol Download](#)

ELISA

Gene Information

Entrez GeneID: [957](#)

GeneBank Accession#: [NM_001249](#)

Protein [NP_001240](#)

Accession#:

Gene Name: ENTPD5

Gene Alias: CD39L4,MGC163357,MGC163359,NTPDase-5,PCPH

Gene Description: ectonucleoside triphosphate diphosphohydrolase 5

Omim ID: [603162](#)

Gene Ontology: [Hyperlink](#)

Gene Summary: The protein encoded by this gene is similar to E-type nucleotidases (NTPases)/ecto-ATPase/apyrases. NTPases, such as CD39, mediate catabolism of extracellular nucleotides. ENTPD5 contains 4 apyrase-conserved regions which is characteristic of NTPases. [provided by RefSeq]

Other Designations: CD39-like 4,Pcph proto-oncogene protein,proto-oncogene CPH

Gene Pathway

[Purine metabolism](#) [Pyrimidine metabolism](#)

Related Disease

[Crohn Disease](#) [Genetic Predisposition to Disease](#)

[服務條款](#) | [隱私權政策](#) | [著作及商標](#) | [網站地圖](#)

©2016 亞諾法生技股份有限公司 Abnova Corporation. 版權所有.