



# SZABO SCANDIC

Part of Europa Biosite

## Produktinformation



Forschungsprodukte & Biochemikalien



Zellkultur & Verbrauchsmaterial



Diagnostik & molekulare Diagnostik



Laborgeräte & Service

Weitere Information auf den folgenden Seiten!  
See the following pages for more information!



### Lieferung & Zahlungsart

siehe unsere [Liefer- und Versandbedingungen](#)

### Zuschläge

- Mindermengenzuschlag
- Trockeneiszuschlag
- Gefahrgutzuschlag
- Expressversand

### SZABO-SCANDIC HandelsgmbH

Quellenstraße 110, A-1100 Wien

T. +43(0)1 489 3961-0

F. +43(0)1 489 3961-7

[mail@szabo-scandic.com](mailto:mail@szabo-scandic.com)

[www.szabo-scandic.com](http://www.szabo-scandic.com)

[linkedin.com/company/szaboscandic](https://www.linkedin.com/company/szaboscandic) 

## ENTPD5 monoclonal antibody (M07), clone 4A5

Catalog # : H00000957-M07

規格 : [ 100 ug ]

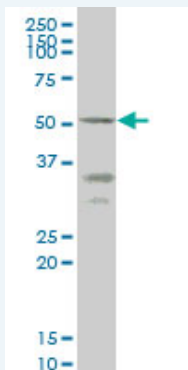
[List All](#)

### Specification

<b>Product Description:</b>	Mouse monoclonal antibody raised against a partial recombinant ENTPD5.
<b>Immunogen:</b>	ENTPD5 (NP_001240, 319 a.a. ~ 400 a.a) partial recombinant protein with GST tag. MW of the GST tag alone is 26 KDa.
<b>Sequence:</b>	EEVQRGSFYAFSYYYDRAVDTDMIDYEKGGILKVEDFERKAREVCDNLE NFTSGSPFLCMDLSYITALLKDGFGFADSTVLQ
<b>Host:</b>	Mouse
<b>Reactivity:</b>	Human
<b>Isotype:</b>	IgG2b Kappa
<b>Quality Control Testing:</b>	Antibody Reactive Against Recombinant Protein.
<b>Storage Buffer:</b>	In 1x PBS, pH 7.4
<b>Storage Instruction:</b>	Store at -20°C or lower. Aliquot to avoid repeated freezing and thawing.
<b>MSDS:</b>	<a href="#">Download</a>
<b>Datasheet:</b>	<a href="#">Download</a>

### Applications

#### Western Blot (Cell lysate)



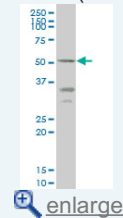
ENTPD5 monoclonal antibody (M07), clone 4A5 Western Blot analysis of ENTPD5 expression in HepG2 ( Cat # L019V1 ).

[Protocol Download](#)

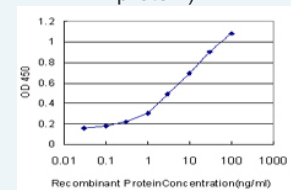
#### Sandwich ELISA (Recombinant protein)

### Application Image

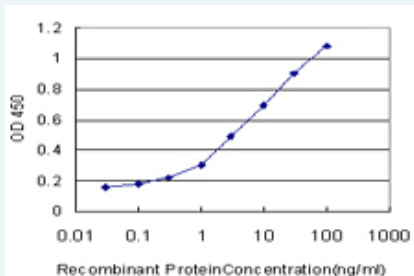
#### Western Blot (Cell lysate)



#### Sandwich ELISA (Recombinant protein)



ELISA



Detection limit for recombinant GST tagged ENTPD5 is approximately 0.3ng/ml as a capture antibody.

 [Protocol Download](#)

## ELISA

### Gene Information

Entrez GeneID: [957](#)

GeneBank [NM\\_001249](#)

Accession#:

Protein [NP\\_001240](#)

Accession#:

Gene Name: ENTPD5

Gene Alias: CD39L4,MGC163357,MGC163359,NTPDase-5,PCPH

Gene Description: ectonucleoside triphosphate diphosphohydrolase 5

Omim ID: [603162](#)

Gene Ontology: [Hyperlink](#)

**Gene Summary:** The protein encoded by this gene is similar to E-type nucleotidases (NTPases)/ecto-ATPase/apyrases. NTPases, such as CD39, mediate catabolism of extracellular nucleotides. ENTPD5 contains 4 apyrase-conserved regions which is characteristic of NTPases. [provided by RefSeq]

**Other Designations:** CD39-like 4,Pcph proto-oncogene protein,proto-oncogene CPH

### Gene Pathway

[Purine metabolism](#) [Pyrimidine metabolism](#)

### Related Disease

[Crohn Disease](#) [Genetic Predisposition to Disease](#)