



SZABO SCANDIC

Part of Europa Biosite

Produktinformation



Forschungsprodukte & Biochemikalien



Zellkultur & Verbrauchsmaterial



Diagnostik & molekulare Diagnostik



Laborgeräte & Service

Weitere Information auf den folgenden Seiten!
See the following pages for more information!



Lieferung & Zahlungsart

siehe unsere [Liefer- und Versandbedingungen](#)

Zuschläge

- Mindermengenzuschlag
- Trockeneiszuschlag
- Gefahrgutzuschlag
- Expressversand

SZABO-SCANDIC HandelsgmbH

Quellenstraße 110, A-1100 Wien

T. +43(0)1 489 3961-0

F. +43(0)1 489 3961-7

mail@szabo-scandic.com

www.szabo-scandic.com

[linkedin.com/company/szaboscandic](https://www.linkedin.com/company/szaboscandic) 

CD40 monoclonal antibody (M01), clone 1G1

Catalog # : H00000958-M01

規格 : [100 ug]

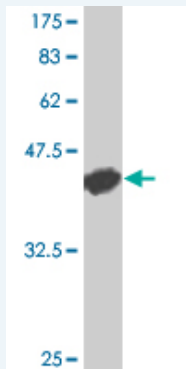
[List All](#)

Specification

Product Description:	Mouse monoclonal antibody raised against a full length recombinant CD40.
Immunogen:	CD40 (AAH64518, 1 a.a. ~ 151 a.a) full-length recombinant protein with GST tag. MW of the GST tag alone is 26 KDa.
Sequence:	MVRLPLQCVLWGCLLTAVHPEPPTACREKQYLINSQCCSLCQPGQKLV SDCTEFTETECLPCGESEFLDTWNRETFHQHKYCDPNLGLRVQKGT SETDTICTCEEGWHCTSEACESCVLHRSCSPGFVVKQIDICQPHFPKDR GLNLLM
Host:	Mouse
Reactivity:	Human
Isotype:	IgG2b Kappa

Quality Control Antibody Reactive Against Recombinant Protein.

Testing:



Western Blot detection against Immunogen (42.35 KDa) .

Storage Buffer: In 1x PBS, pH 7.4

Storage Instruction: Store at -20°C or lower. Aliquot to avoid repeated freezing and thawing.

MSDS: [Download](#)

Datasheet: [Download](#)

Applications

Western Blot (Recombinant protein)

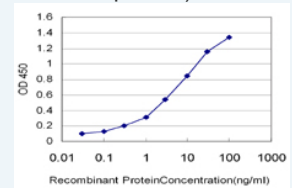
[Protocol Download](#)

Sandwich ELISA (Recombinant protein)

Application Image

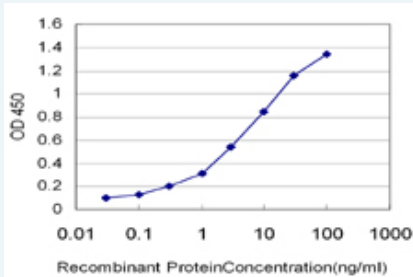
Western Blot (Recombinant protein)

Sandwich ELISA (Recombinant protein)



[enlarge](#)

ELISA



Detection limit for recombinant GST tagged CD40 is approximately 0.1ng/ml as a capture antibody.

 [Protocol Download](#)

ELISA

Gene Information

Entrez GeneID: [958](#)

GeneBank [BC064518](#)

Accession#:

Protein [AAH64518](#)

Accession#:

Gene Name: CD40

Gene Alias: Bp50,CDW40,MGC9013,TNFRSF5,p50

Gene Description: CD40 molecule, TNF receptor superfamily member 5

Omim ID: [109535](#), [606843](#)

Gene Ontology: [Hyperlink](#)

Gene Summary: The protein encoded by this gene is a member of the TNF-receptor superfamily. This receptor has been found to be essential in mediating a broad variety of immune and inflammatory responses including T cell-dependent immunoglobulin class switching, memory B cell development, and germinal center formation. AT-hook transcription factor AKNA is reported to coordinately regulate the expression of this receptor and its ligand, which may be important for homotypic cell interactions. Adaptor protein TNFR2 interacts with this receptor and serves as a mediator of the signal transduction. The interaction of this receptor and its ligand is found to be necessary for amyloid-beta-induced microglial activation, and thus is thought to be an early event in Alzheimer disease pathogenesis. Two alternatively spliced transcript variants of this gene encoding distinct isoforms have been reported. [provided by RefSeq]

Other Designations: B cell surface antigen CD40,B cell-associated molecule,CD40 antigen,CD40 antigen (TNF receptor superfamily member 5),CD40 type II isoform,CD40L receptor,OTTHUMP00000031699,OTTHUMP00000031700,nerve growth factor receptor-related B-lymphocyte activation mol

Gene Pathway

[Allograft rejection](#) [Asthma](#) [Autoimmune thyroid disease](#) [Cell adhesion molecules \(CAMs\)](#) [Cytokine-cytokine receptor interaction](#) [Primary immunodeficiency](#) [Systemic lupus erythematosus](#) [Toll-like receptor signaling pathway](#)

Related Disease

[Arthritis](#), [Juvenile Rheumatoid Arthritis](#), [Rheumatoid Arthritis](#), [Asthma](#), [Asthma](#), [Atherosclerosis](#), [Atherosclerosis](#), [Autoimmune Diseases](#), [Brain Ischemia](#), [Bronchiolitis](#), [Viral Calcinosis](#), [Cardiovascular Diseases](#), [Colitis](#), [Ulcerative Coronary Artery Disease](#), [Coronary Disease](#)

[Crohn Disease](#) [Crohn's disease](#) [Diabetes Mellitus](#) [Diabetes Mellitus, Type 1](#)
[Diabetes Mellitus, Type 2](#)

[... see more](#)

[服務條款](#) | [隱私權政策](#) | [著作及商標](#) | [網站地圖](#)

©2016 亞諾法生技股份有限公司 Abnova Corporation. 版權所有.