



# SZABO SCANDIC

Part of Europa Biosite

## Produktinformation



Forschungsprodukte & Biochemikalien



Zellkultur & Verbrauchsmaterial



Diagnostik & molekulare Diagnostik



Laborgeräte & Service

Weitere Information auf den folgenden Seiten!  
See the following pages for more information!



### Lieferung & Zahlungsart

siehe unsere [Liefer- und Versandbedingungen](#)

### Zuschläge

- Mindermengenzuschlag
- Trockeneiszuschlag
- Gefahrgutzuschlag
- Expressversand

### SZABO-SCANDIC HandelsgmbH

Quellenstraße 110, A-1100 Wien

T. +43(0)1 489 3961-0

F. +43(0)1 489 3961-7

[mail@szabo-scandic.com](mailto:mail@szabo-scandic.com)

[www.szabo-scandic.com](http://www.szabo-scandic.com)

[linkedin.com/company/szaboscandic](https://www.linkedin.com/company/szaboscandic) 

## CD40LG monoclonal antibody (M01), clone 2E2

Catalog # : H00000959-M01

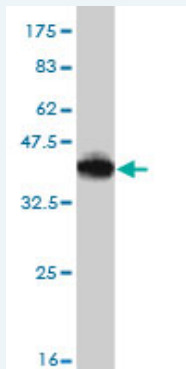
規格 : [ 100 ug ]

[List All](#)

### Specification

<b>Product Description:</b>	Mouse monoclonal antibody raised against a partial recombinant CD40LG.
<b>Immunogen:</b>	CD40LG (NP_000065, 101 a.a. ~ 203 a.a) partial recombinant protein with GST tag. MW of the GST tag alone is 26 KDa.
<b>Sequence:</b>	NKEETKKENSFEMQKGDQNPQIAAHVISEASSKTTSVLQWAEKGYTMS NNLVTLENGKQLTVKRQGLYYIYAQVTFCSNREASSQAPFIASLCLKSPG RFER
<b>Host:</b>	Mouse
<b>Reactivity:</b>	Human
<b>Isotype:</b>	IgG2b Kappa

**Quality Control Testing:** Antibody Reactive Against Recombinant Protein.



Western Blot detection against Immunogen (37.07 KDa) .

**Storage Buffer:** In 1x PBS, pH 7.4

**Storage Instruction:** Store at -20°C or lower. Aliquot to avoid repeated freezing and thawing.

**MSDS:** [Download](#)

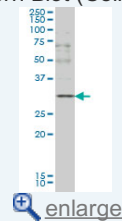
**Datasheet:** [Download](#)

### Applications

Western Blot (Cell lysate)

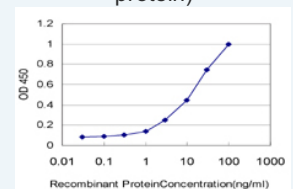
### Application Image

Western Blot (Cell lysate)

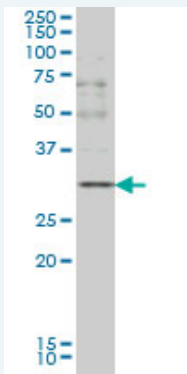


Western Blot (Recombinant protein)

Sandwich ELISA (Recombinant protein)



ELISA



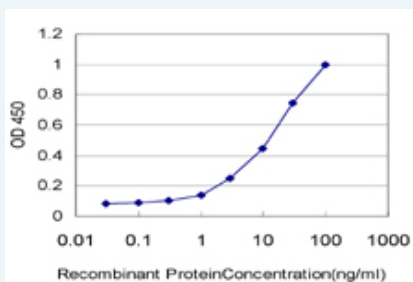
CD40LG monoclonal antibody (M01), clone 2E2 Western Blot analysis of CD40LG expression in K-562 ( Cat # L009V1 ).

[Protocol Download](#)

#### Western Blot (Recombinant protein)

[Protocol Download](#)

#### Sandwich ELISA (Recombinant protein)



Detection limit for recombinant GST tagged CD40LG is approximately 0.3ng/ml as a capture antibody.

[Protocol Download](#)

#### ELISA

#### Gene Information

Entrez GeneID: [959](#)

GeneBank [NM\\_000074](#)

Accession#:

Protein [NP\\_000065](#)

Accession#:

Gene Name: CD40LG

Gene Alias: CD154,CD40L,HIGM1,IGM,IMD3,T-BAM,TNFSF5,TRAP,gp39,hCD40L

Gene Description: CD40 ligand

Description:

Omim ID: [300386](#), [308230](#)

Gene Ontology: [Hyperlink](#)

**Gene Summary:** The protein encoded by this gene is expressed on the surface of T cells. It regulates B cell function by engaging CD40 on the B cell surface. A defect in this gene results in an inability to undergo immunoglobulin class switch and is associated with hyper-IgM syndrome. [provided by RefSeq]

**Other Designations:** CD40 antigen ligand,OTTHUMP00000024130,T-B cell-activating molecule,TNF-related activation protein,tumor necrosis factor (ligand) superfamily member 5

## Gene Pathway

---

[Allograft rejection](#) [Asthma](#) [Autoimmune thyroid disease](#) [Cell adhesion molecules \(CAMs\)](#)  
[Cytokine-cytokine receptor interaction](#) [Primary immunodeficiency](#)  
[Systemic lupus erythematosus](#) [T cell receptor signaling pathway](#)

## Related Disease

---

[Alzheimer Disease](#) [Alzheimer disease](#) [Arthritis, Rheumatoid](#) [Asthma](#) [Asthma](#)  
[Atherosclerosis](#) [Atherosclerosis](#) [Bronchiolitis, Viral](#) [Calcinosis](#) [Cardiovascular Diseases](#)  
[Coronary Artery Disease](#) [Coronary Stenosis](#) [Diabetes Complications](#)  
[Diabetes Mellitus, Type 2](#) [Diabetic Angiopathies](#) [Disease Progression](#) [Drug Eruptions](#)  
[Edema](#) [Genetic Predisposition to Disease](#)

... see more

---

[服務條款](#) | [隱私權政策](#) | [著作及商標](#) | [網站地圖](#)

©2016 亞諾法生技股份有限公司 Abnova Corporation. 版權所有.