



# SZABO SCANDIC

Part of Europa Biosite

## Produktinformation



Forschungsprodukte & Biochemikalien



Zellkultur & Verbrauchsmaterial



Diagnostik & molekulare Diagnostik



Laborgeräte & Service

Weitere Information auf den folgenden Seiten!  
See the following pages for more information!



### Lieferung & Zahlungsart

siehe unsere [Liefer- und Versandbedingungen](#)

### Zuschläge

- Mindermengenzuschlag
- Trockeneiszuschlag
- Gefahrgutzuschlag
- Expressversand

### SZABO-SCANDIC HandelsgmbH

Quellenstraße 110, A-1100 Wien

T. +43(0)1 489 3961-0

F. +43(0)1 489 3961-7

[mail@szabo-scandic.com](mailto:mail@szabo-scandic.com)

[www.szabo-scandic.com](http://www.szabo-scandic.com)

[linkedin.com/company/szaboscandic](https://www.linkedin.com/company/szaboscandic) 

## CD58 monoclonal antibody (M01), clone 2D11-B10

Catalog # : H00000965-M01

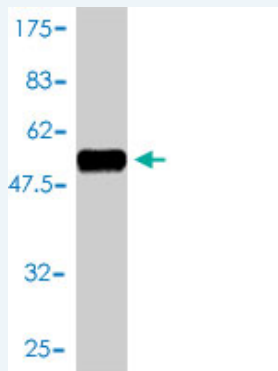
規格 : [ 100 ug ]

[List All](#)

### Specification

|                             |  |
|-----------------------------|--|
| <b>Product Description:</b> | Mouse monoclonal antibody raised against a full length recombinant CD58.   |
| <b>Immunogen:</b>           | CD58 (AAH05930, 1 a.a. ~ 240 a.a) full-length recombinant protein with GST tag. MW of the GST tag alone is 26 KDa.   |
| <b>Sequence:</b>            | MVAGSDAGRALGVLSVCLLHCFGFISCFSQQIYGVVYGNVTFHVPSNV<br>PLKEVLWKKQKDKVAELENSEFRAFSSFKNRVYLDTVSGSLTIYNLTSSD<br>EDEYEMESPNTDTMKFFLYVLESLPSPTLTALTNQSIIEVQCMPIEYNS<br>HRGLIMYSWDCPMEQCKRNSTSIYFKMENDLPQKIQTLSNPLFNTTSSII<br>LTTTCIPSSGHSRHRALYALIPLAVITTCVLYMNGMYAF |
| <b>Host:</b>                | Mouse  |
| <b>Reactivity:</b>          | Human  |
| <b>Isotype:</b>             | IgG2a kappa  |

**Quality Control Testing:** Antibody Reactive Against Recombinant Protein.



Western Blot detection against Immunogen (52.14 KDa) .

**Storage Buffer:** In 1x PBS, pH 7.4

**Storage Instruction:** Store at -20°C or lower. Aliquot to avoid repeated freezing and thawing.

**MSDS:** [Download](#)

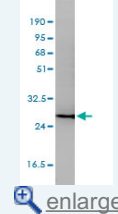
**Datasheet:** [Download](#)

### Applications

**Western Blot (Cell lysate)**

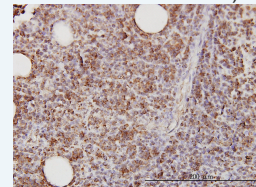
### Application Image

Western Blot (Cell lysate)

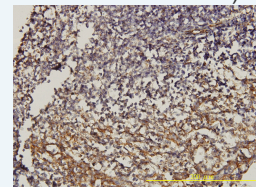


Western Blot (Recombinant protein)

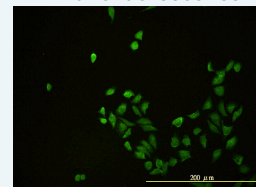
Immunohistochemistry (Formalin/PFA-fixed paraffin-embedded sections)



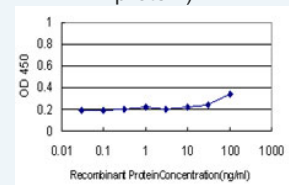
Immunohistochemistry (Formalin/PFA-fixed paraffin-embedded sections)



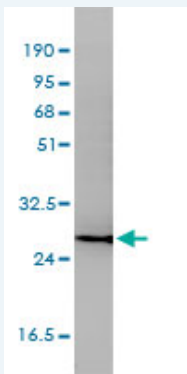
Immunofluorescence



Sandwich ELISA (Recombinant protein)



ELISA



CD58 monoclonal antibody (M01), clone 2D11-B10 Western Blot analysis of CD58 expression in Jurkat ( Cat # L017V1 ).

 [Protocol Download](#)

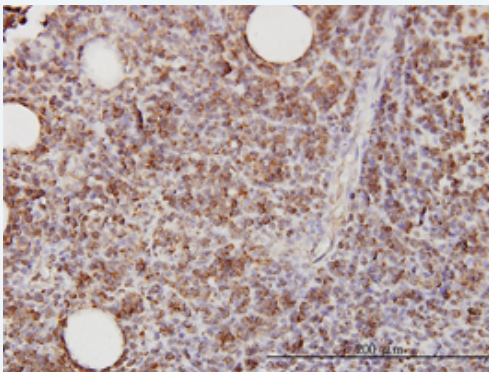
---

#### Western Blot (Recombinant protein)

 [Protocol Download](#)

---

#### Immunohistochemistry (Formalin/PFA-fixed paraffin-embedded sections)



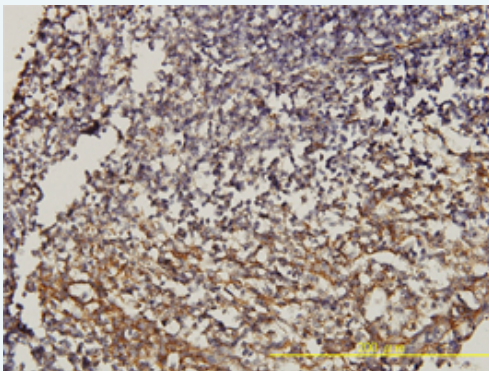
 [enlarge this image](#)

Immunoperoxidase of monoclonal antibody to CD58 on formalin-fixed paraffin-embedded human lymphoma tissue [antibody concentration 3 ug/ml]

 [Protocol Download](#)

---

#### Immunohistochemistry (Formalin/PFA-fixed paraffin-embedded sections)



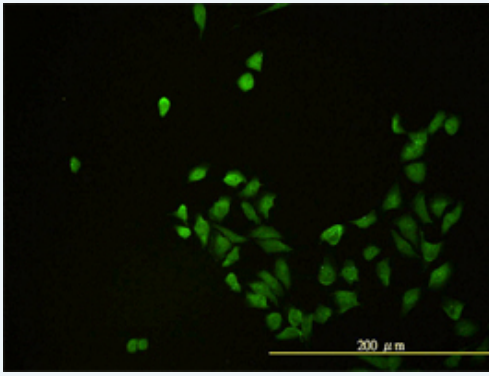
 [enlarge this image](#)

Immunoperoxidase of monoclonal antibody to CD58 on formalin-fixed paraffin-embedded human tonsil. [antibody concentration 2 ug/ml]

 [Protocol Download](#)

---

#### Immunofluorescence

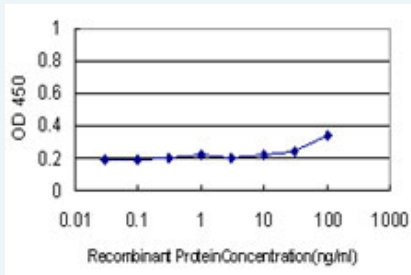


[enlarge this image](#)

Immunofluorescence of monoclonal antibody to CD58 on HeLa cell. [antibody concentration 10 ug/ml]

[Protocol Download](#)

### Sandwich ELISA (Recombinant protein)



Detection limit for recombinant GST tagged CD58 is approximately 0.3ng/ml as a capture antibody.

[Protocol Download](#)

### ELISA

#### Gene Information

Entrez GeneID: [965](#)

GeneBank [BC005930](#)

Accession#:

Protein [AAH05930](#)

Accession#:

Gene Name: CD58

Gene Alias: LFA-3,LFA3

Gene Description: CD58 molecule

Description:

Omim ID: [153420](#)

Gene Ontology: [Hyperlink](#)

**Gene Summary:** This gene encodes a member of the immunoglobulin superfamily. The encoded protein is a ligand of the T lymphocyte CD2 protein, and functions in adhesion and activation of T lymphocytes. The protein is localized to the plasma membrane. Alternatively spliced transcript variants have been described. [provided by RefSeq]

**Other Designations:** CD58 antigen, (lymphocyte function-associated antigen 3),OTTHUMP00000024363

#### Gene Pathway

Cell adhesion molecules (CAMs)

## Related Disease

---

[Arthritis, Rheumatoid](#) [Autoimmune Diseases](#) [Crohn's disease](#) [Diabetes Mellitus, Type 1](#)  
[Genetic Predisposition to Disease](#) [Hepatitis B](#) [Multiple Sclerosis](#)  
[Multiple Sclerosis, Relapsing-Remitting](#)

---

[服務條款](#) | [隱私權政策](#) | [著作及商標](#) | [網站地圖](#)

©2016 亞諾法生技股份有限公司 Abnova Corporation. 版權所有.