



# SZABO SCANDIC

Part of Europa Biosite

## Produktinformation



Forschungsprodukte & Biochemikalien



Zellkultur & Verbrauchsmaterial



Diagnostik & molekulare Diagnostik



Laborgeräte & Service

Weitere Information auf den folgenden Seiten!  
See the following pages for more information!



### Lieferung & Zahlungsart

siehe unsere [Liefer- und Versandbedingungen](#)

### Zuschläge

- Mindermengenzuschlag
- Trockeneiszuschlag
- Gefahrgutzuschlag
- Expressversand

### SZABO-SCANDIC HandelsgmbH

Quellenstraße 110, A-1100 Wien

T. +43(0)1 489 3961-0

F. +43(0)1 489 3961-7

[mail@szabo-scandic.com](mailto:mail@szabo-scandic.com)

[www.szabo-scandic.com](http://www.szabo-scandic.com)

[linkedin.com/company/szaboscandic](https://www.linkedin.com/company/szaboscandic) 

## CD59 monoclonal antibody (M02), clone 3G6

Catalog # : H00000966-M02

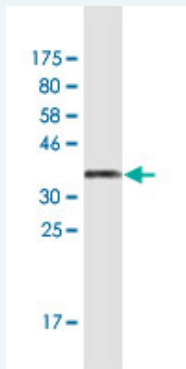
規格 : [ 100 ug ]

[List All](#)

### Specification

<b>Product Description:</b>	Mouse monoclonal antibody raised against a full-length recombinant CD59.
<b>Immunogen:</b>	CD59 (NP_000602.1, 1 a.a. ~ 128 a.a) full-length recombinant protein with GST tag. MW of the GST tag alone is 26 KDa.
<b>Sequence:</b>	MGIQGGSVLFGLLLVLAVFCHSGHSLQCYNCPNPTADCKTAVNCSSDFD ACLITKAGLQVYNKCWKFHCNFDVTTTRLRENELTYCCKKDLGNFNE QLENGGTSLSSEKTVLLLVTPFLAAAWSLHP
<b>Host:</b>	Mouse
<b>Reactivity:</b>	Human
<b>Isotype:</b>	IgG2a Kappa

**Quality Control Testing:** Antibody Reactive Against Recombinant Protein.



Western Blot detection against Immunogen (40.6 KDa) .

**Storage Buffer:** In 1x PBS, pH 7.4

**Storage Instruction:** Store at -20°C or lower. Aliquot to avoid repeated freezing and thawing.

**MSDS:** [Download](#)

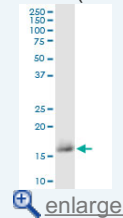
**Datasheet:** [Download](#)

### Applications

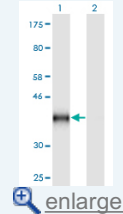
Western Blot (Cell lysate)

### Application Image

Western Blot (Cell lysate)

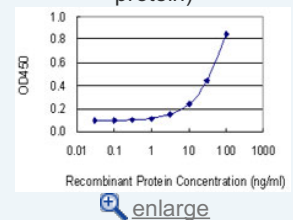


Western Blot (Transfected lysate)

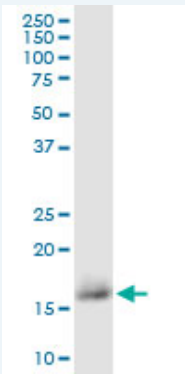


Western Blot (Recombinant protein)

Sandwich ELISA (Recombinant protein)



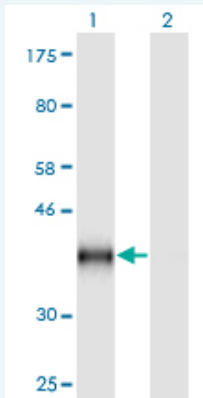
ELISA



CD59 monoclonal antibody (M02), clone 3G6. Western Blot analysis of CD59 expression in HeLa.

[Protocol Download](#)

#### Western Blot (Transfected lysate)



Western Blot analysis of CD59 expression in transfected 293T cell line by CD59 monoclonal antibody (M02), clone 3G6.

Lane 1: CD59 transfected lysate (Predicted MW: 41.2 KDa).

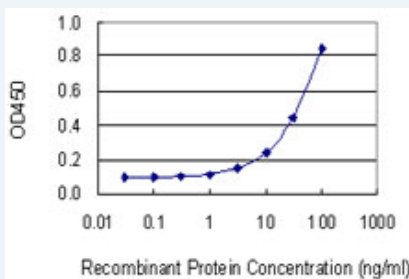
Lane 2: Non-transfected lysate.

[Protocol Download](#)

#### Western Blot (Recombinant protein)

[Protocol Download](#)

#### Sandwich ELISA (Recombinant protein)



Detection limit for recombinant GST tagged CD59 is 1 ng/ml as a capture antibody.

[Protocol Download](#)

#### ELISA

#### Gene Information

Entrez GeneID: [966](#)

GeneBank [NM\\_000611.4](#)

Accession#:

Protein [NP\\_000602.1](#)

Accession#:

**Gene Name:** CD59

**Gene Alias:** 16.3A5,1F5,EJ16,EJ30,EL32,FLJ38134,FLJ92039,G344,HRF-20,HRF20,MAC-IP,MACIF,MEM43,MGC2354,MIC11,MIN1,MIN2,MIN3,MIRL,MSK21,p18-20

**Gene Description:** CD59 molecule, complement regulatory protein

**Omim ID:** [107271](#)

**Gene Ontology:** [Hyperlink](#)

**Gene Summary:** This gene encodes a cell surface glycoprotein that regulates complement-mediated cell lysis, and it is involved in lymphocyte signal transduction. This protein is a potent inhibitor of the complement membrane attack complex, whereby it binds complement C8 and/or C9 during the assembly of this complex, thereby inhibiting the incorporation of multiple copies of C9 into the complex, which is necessary for osmolytic pore formation. This protein also plays a role in signal transduction pathways in the activation of T cells. Mutations in this gene cause CD59 deficiency, a disease resulting in hemolytic anemia and thrombosis, and which causes cerebral infarction. Multiple alternatively spliced transcript variants, which encode the same protein, have been identified for this gene. [provided by RefSeq]

**Other Designations:** 20 kDa homologous restriction factor,CD59 antigen,CD59 antigen p18-20 (antigen identified by monoclonal antibodies 16.3A5, EJ16, EJ30, EL32 and G344),CD59 glycoprotein,Ly-6-like protein,T cell-activating protein,human leukocyte antigen MIC11,lymphocytic a

#### **Gene Pathway**

[Complement and coagulation cascades](#) [Hematopoietic cell lineage](#)

#### **Related Disease**

[Genetic Predisposition to Disease](#) [Lymphoma, Non-Hodgkin](#) [Macular Degeneration](#)