



# SZABO SCANDIC

Part of Europa Biosite

## Produktinformation



Forschungsprodukte & Biochemikalien



Zellkultur & Verbrauchsmaterial



Diagnostik & molekulare Diagnostik



Laborgeräte & Service

Weitere Information auf den folgenden Seiten!  
See the following pages for more information!



### Lieferung & Zahlungsart

siehe unsere [Liefer- und Versandbedingungen](#)

### Zuschläge

- Mindermengenzuschlag
- Trockeneiszuschlag
- Gefahrgutzuschlag
- Expressversand

### SZABO-SCANDIC HandelsgmbH

Quellenstraße 110, A-1100 Wien

T. +43(0)1 489 3961-0

F. +43(0)1 489 3961-7

[mail@szabo-scandic.com](mailto:mail@szabo-scandic.com)

[www.szabo-scandic.com](http://www.szabo-scandic.com)

[linkedin.com/company/szaboscandic](https://www.linkedin.com/company/szaboscandic) 

## CD68 polyclonal antibody (A01)

Catalog # : H00000968-A01

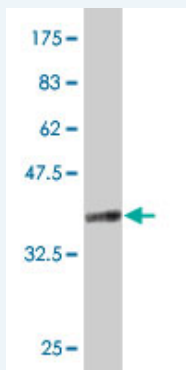
規格 : [ 50 uL ]

List All

### Specification

<b>Product Description:</b>	Mouse polyclonal antibody raised against a partial recombinant CD68.
<b>Immunogen:</b>	CD68 (NP_001242, 164 a.a. ~ 262 a.a) partial recombinant protein with GST tag.
<b>Sequence:</b>	NGSQPCVHLQAQIQIRVMYTTQGGGEAWGISVLNPNKTKVQGSCEGAH PHLLLSFPYGHLSFGFMQDLQKQVVYLSYMAVEYNVSFPHAAKWTFS A QNA
<b>Host:</b>	Mouse
<b>Reactivity:</b>	Human

**Quality Control Testing:** Antibody Reactive Against Recombinant Protein.



Western Blot detection against Immunogen (37 KDa) .

**Storage Buffer:** 50 % glycerol

**Storage Instruction:** Store at -20°C or lower. Aliquot to avoid repeated freezing and thawing.

**MSDS:** [Download](#)

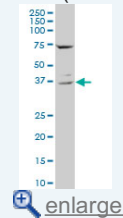
**Datasheet:** [Download](#)

### Applications

Western Blot (Tissue lysate)

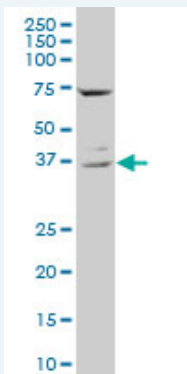
### Application Image

Western Blot (Tissue lysate)



Western Blot (Recombinant protein)

ELISA



CD68 polyclonal antibody (A01), Lot # 060717JCS1. Western Blot analysis of CD68 expression in human ovarian cancer.

 [Protocol Download](#)

#### Western Blot (Recombinant protein)

 [Protocol Download](#)

#### ELISA

#### Gene Information

**Entrez GeneID:** [968](#)

**GeneBank** [NM\\_001251](#)

**Accession#:**

**Protein** [NP\\_001242](#)

**Accession#:**

**Gene Name:** CD68

**Gene Alias:** DKFZp686M18236,GP110,SCARD1

**Gene** CD68 molecule

**Description:**

**Omim ID:** [153634](#)

**Gene Ontology:** [Hyperlink](#)

**Gene Summary:** This gene encodes a 110-kD transmembrane glycoprotein that is highly expressed by human monocytes and tissue macrophages. It is a member of the lysosomal/endosomal-associated membrane glycoprotein (LAMP) family. The protein primarily localizes to lysosomes and endosomes with a smaller fraction circulating to the cell surface. It is a type I integral membrane protein with a heavily glycosylated extracellular domain and binds to tissue- and organ-specific lectins or selectins. The protein is also a member of the scavenger receptor family. Scavenger receptors typically function to clear cellular debris, promote phagocytosis, and mediate the recruitment and activation of macrophages. Alternative splicing results in multiple transcripts encoding different isoforms. [provided by RefSeq]

**Other** CD68 antigen,OTTHUMP00000135285,macrophage antigen

**Designations:** CD68,macrosialin,scavenger receptor class D, member 1

#### Gene Pathway

[Lysosome](#)

