



# SZABO SCANDIC

Part of Europa Biosite

## Produktinformation



Forschungsprodukte & Biochemikalien



Zellkultur & Verbrauchsmaterial



Diagnostik & molekulare Diagnostik



Laborgeräte & Service

Weitere Information auf den folgenden Seiten!  
See the following pages for more information!



### Lieferung & Zahlungsart

siehe unsere [Liefer- und Versandbedingungen](#)

### Zuschläge

- Mindermengenzuschlag
- Trockeneiszuschlag
- Gefahrgutzuschlag
- Expressversand

### SZABO-SCANDIC HandelsgmbH

Quellenstraße 110, A-1100 Wien

T. +43(0)1 489 3961-0

F. +43(0)1 489 3961-7

[mail@szabo-scandic.com](mailto:mail@szabo-scandic.com)

[www.szabo-scandic.com](http://www.szabo-scandic.com)

[linkedin.com/company/szaboscandic](https://www.linkedin.com/company/szaboscandic) 

## CHRNA4 MaxPab mouse polyclonal antibody (B01) MaxPab®

Catalog # : H00001137-B01

規格 : [ 50 uL ]

[List All](#)

### Specification

**Product Description:** Mouse polyclonal antibody raised against a full-length human CHRNA4 protein.

**Immunogen:** CHRNA4 (AAH96292.1, 1 a.a. ~ 451 a.a) full-length human protein.

**Sequence:**  
 MKFGSWTYDKAKIDLVMHSRVDQLDFWESGEWVIVDAVGTYNTRKYE  
 CCAEIYPDITYAFVIRRLPLFYITINLIIPCLLISCLTVLVFYL PSECGEKITLCIS  
 VLLSLTVFLLLITEIIPSTSLVIPLIGEYLLFTMIFVTL SIVITVFVLNVHHRSPR  
 THTMPTWVRRVFLDIVPRLLLMKRPSWKDNCRR LIESMHKMASAPRFW  
 PEPEGEPPATSGTQSLHPPSPSFCVPLD VPAEPGSPCKSPSDQLPPQQ  
 PLEAEKASPHSPGPCRPPHGTQAPGLAKARSLSVQH MSSPGEAVEGG  
 VRCRSRSIQVPRDDAAPEADGQAAGALASRNTHSAEL PPDQPSPC  
 KCTCKKEPSSVSPSATVKTRSTKAPPPHLPLSPAL TRAVEGVQYIADHLK  
 AEDTDFSVKEDWKYVAMVIDRIFLWMFIVCLLGT VGLFLPPWLAGMI

**Host:** Mouse

**Reactivity:** Human

**Quality Control Testing:** Antibody reactive against mammalian transfected lysate.

**Storage Buffer:** No additive

**Storage Instruction:** Store at -20°C or lower. Aliquot to avoid repeated freezing and thawing.

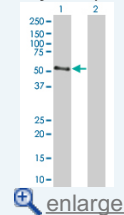
**Note:** For IHC and IF applications, antibody purification with Protein A will be needed prior to use.

**MSDS:** [Download](#)

**Datasheet:** [Download](#)

### Application Image

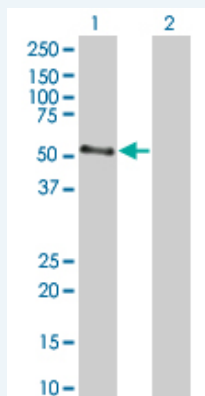
Western Blot (Transfected lysate)



[enlarge](#)

### Applications

Western Blot (Transfected lysate)



Western Blot analysis of CHRNA4 expression in transfected 293T cell line (H00001137-T01) by CHRNA4 MaxPab polyclonal antibody.

Lane 1: CHRNA4 transfected lysate(49.61 KDa).  
Lane 2: Non-transfected lysate.

 [Protocol Download](#)

---

## Gene Information

---

**Entrez GeneID:** [1137](#)

---

**GeneBank  
Accession#:** [BC096292.1](#)

---

**Protein  
Accession#:** [AAH96292.1](#)

---

**Gene Name:** CHRNA4

---

**Gene Alias:** BFNC,EBN,EBN1,FLJ95812,NACHR,NACHRA4,NACRA4

---

**Gene  
Description:** cholinergic receptor, nicotinic, alpha 4

---

**Omim ID:** [118504](#), [188890](#), [600513](#)

---

**Gene Ontology:** [Hyperlink](#)

---

**Gene Summary:** This gene encodes a nicotinic acetylcholine receptor, which belongs to a superfamily of ligand-gated ion channels that play a role in fast signal transmission at synapses. These pentameric receptors can bind acetylcholine, which causes an extensive change in conformation that leads to the opening of an ion-conducting channel across the plasma membrane. This protein is an integral membrane receptor subunit that can interact with either nAChR beta-2 or nAChR beta-4 to form a functional receptor. Mutations in this gene cause nocturnal frontal lobe epilepsy type 1. Polymorphisms in this gene that provide protection against nicotine addiction have been described. [provided by RefSeq]

---

**Other  
Designations:** cholinergic receptor, nicotinic, alpha 4 subunit,cholinergic receptor, nicotinic, alpha polypeptide 4,neuronal nicotinic acetylcholine receptor alpha-4 subunit

---

## Related Disease

---

[Alcoholism](#) [Alcohol-Related Disorders](#) [Alzheimer Disease](#) [Alzheimer disease](#)  
[Amphetamine-Related Disorders](#) [Amyotrophic lateral sclerosis](#) [Attention](#)  
[Attention Deficit Disorder with Hyperactivity](#) [Autistic Disorder](#) [Bipolar Disorder](#) [Cleft Lip](#)  
[Cleft Palate](#) [Cognition](#) [Cognition Disorders](#) [Cues Discrimination \(Psychology\)](#)  
[Disease Models, Animal](#) [DNA Damage](#) [Ductus Arteriosus, Patent](#)

... see more

---

[服務條款](#) | [隱私權政策](#) | [著作及商標](#) | [網站地圖](#)

©2016 亞諾法生技股份有限公司 Abnova Corporation. 版權所有.