



# SZABO SCANDIC

Part of Europa Biosite

## Produktinformation



Forschungsprodukte & Biochemikalien



Zellkultur & Verbrauchsmaterial



Diagnostik & molekulare Diagnostik



Laborgeräte & Service

Weitere Information auf den folgenden Seiten!  
See the following pages for more information!



### Lieferung & Zahlungsart

siehe unsere [Liefer- und Versandbedingungen](#)

### Zuschläge

- Mindermengenzuschlag
- Trockeneiszuschlag
- Gefahrgutzuschlag
- Expressversand

### SZABO-SCANDIC HandelsgmbH

Quellenstraße 110, A-1100 Wien

T. +43(0)1 489 3961-0

F. +43(0)1 489 3961-7

[mail@szabo-scandic.com](mailto:mail@szabo-scandic.com)

[www.szabo-scandic.com](http://www.szabo-scandic.com)

[linkedin.com/company/szaboscandic](https://www.linkedin.com/company/szaboscandic) 

## CHRNB1 polyclonal antibody (A01)

Catalog # : H00001140-A01

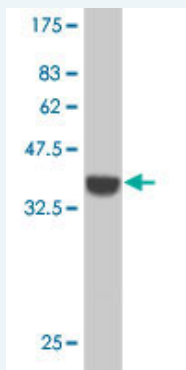
規格 : [ 50 uL ]

[List All](#)

### Specification

<b>Product Description:</b>	Mouse polyclonal antibody raised against a partial recombinant CHRNB1.
<b>Immunogen:</b>	CHRNB1 (NP_000738, 24 a.a. ~ 128 a.a) partial recombinant protein with GST tag.
<b>Sequence:</b>	SEAEGRLREKLFSGYDSSVRPAREVGDVRVSVGLILAQLISLNEKDEEM STKVYLDLEWTDYRLSWDPAEHDGIDSLRITAESWWLPDWLLNNNDGN FDVALD
<b>Host:</b>	Mouse
<b>Reactivity:</b>	Human

**Quality Control Testing:** Antibody Reactive Against Recombinant Protein.



Western Blot detection against Immunogen (37.66 KDa) .

**Storage Buffer:** 50 % glycerol

**Storage Instruction:** Store at -20°C or lower. Aliquot to avoid repeated freezing and thawing.

**MSDS:** [Download](#)

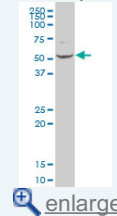
**Datasheet:** [Download](#)

### Applications

Western Blot (Cell lysate)

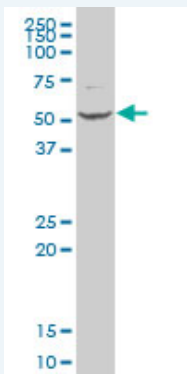
### Application Image

Western Blot (Cell lysate)



Western Blot (Recombinant protein)

ELISA



CHRNB1 polyclonal antibody (A01), Lot # 061103JCS1 Western Blot analysis of CHRNB1 expression in SJCRH30 ( Cat # L027V1 ).

 [Protocol Download](#)

---

#### Western Blot (Recombinant protein)

 [Protocol Download](#)

---

#### ELISA

---

#### Gene Information

**Entrez GeneID:** [1140](#)

**GeneBank Accession#:** [NM\\_000747](#)

**Protein Accession#:** [NP\\_000738](#)

**Gene Name:** CHRNB1

**Gene Alias:** ACHRB, CHRNB, CMS1D, CMS2A, SCCMS

**Gene Description:** cholinergic receptor, nicotinic, beta 1 (muscle)

**Omim ID:** [100710](#), [601462](#), [608931](#)

**Gene Ontology:** [Hyperlink](#)

**Gene Summary:** The muscle acetylcholine receptor is composed of five subunits: two alpha subunits and one beta, one gamma, and one delta subunit. This gene encodes the beta subunit of the acetylcholine receptor. The acetylcholine receptor changes conformation upon acetylcholine binding leading to the opening of an ion-conducting channel across the plasma membrane. Mutations in this gene are associated with slow-channel congenital myasthenic syndrome. [provided by RefSeq]

**Other Designations:** cholinergic receptor, nicotinic, beta polypeptide 1 (muscle), nicotinic acetylcholine receptor beta 1 subunit

---

#### Related Disease

[Bipolar Disorder](#) [Genetic Predisposition to Disease](#) [Mental Disorders](#) [Obesity](#) [Ovarian Failure](#), [Premature Puberty](#), [Polycystic Ovary Syndrome](#) [Puberty, Delayed](#) [Puberty, Precocious](#) [Thrombophilia](#) [Tobacco Use Disorder](#)