



# SZABO SCANDIC

Part of Europa Biosite

## Produktinformation



Forschungsprodukte & Biochemikalien



Zellkultur & Verbrauchsmaterial



Diagnostik & molekulare Diagnostik



Laborgeräte & Service

Weitere Information auf den folgenden Seiten!  
See the following pages for more information!



### Lieferung & Zahlungsart

siehe unsere [Liefer- und Versandbedingungen](#)

### Zuschläge

- Mindermengenzuschlag
- Trockeneiszuschlag
- Gefahrgutzuschlag
- Expressversand

### SZABO-SCANDIC HandelsgmbH

Quellenstraße 110, A-1100 Wien

T. +43(0)1 489 3961-0

F. +43(0)1 489 3961-7

[mail@szabo-scandic.com](mailto:mail@szabo-scandic.com)

[www.szabo-scandic.com](http://www.szabo-scandic.com)

[linkedin.com/company/szaboscandic](https://www.linkedin.com/company/szaboscandic) 

## CHRND monoclonal antibody (M01), clone 2B2

Catalog # : H00001144-M01

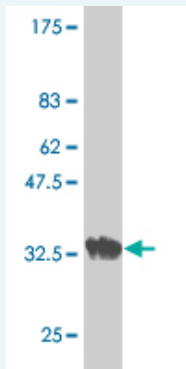
規格 : [ 100 ug ]

List All

### Specification

<b>Product Description:</b>	Mouse monoclonal antibody raised against a partial recombinant CHRND.
<b>Immunogen:</b>	CHRND (NP_000742, 24 a.a. ~ 130 a.a) partial recombinant protein with GST tag. MW of the GST tag alone is 26 KDa.
<b>Sequence:</b>	EEERLIRHLFQKEGYNKELRPVAHKEESVDVALALTLNLSLKEVEETLT TNVWIEHGWTDNRLKWNAAEEFGNISVLRLPPDMVWLPEMLENNNDGSF QISYSCN
<b>Host:</b>	Mouse
<b>Reactivity:</b>	Human
<b>Isotype:</b>	IgG2a Kappa

**Quality Control Testing:** Antibody Reactive Against Recombinant Protein.



Western Blot detection against Immunogen (37.51 KDa) .

**Storage Buffer:** In 1x PBS, pH 7.4

**Storage Instruction:** Store at -20°C or lower. Aliquot to avoid repeated freezing and thawing.

**MSDS:** [Download](#)

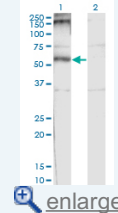
**Datasheet:** [Download](#)

### Applications

Western Blot (Transfected lysate)

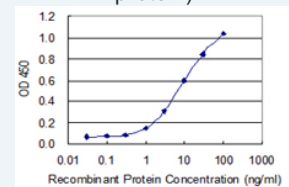
### Application Image

Western Blot (Transfected lysate)



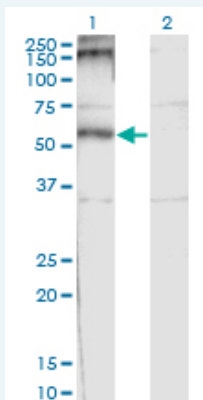
Western Blot (Recombinant protein)

Sandwich ELISA (Recombinant protein)



[enlarge](#)

ELISA



Western Blot analysis of CHRND expression in transfected 293T cell line by CHRND monoclonal antibody (M01), clone 2B2.

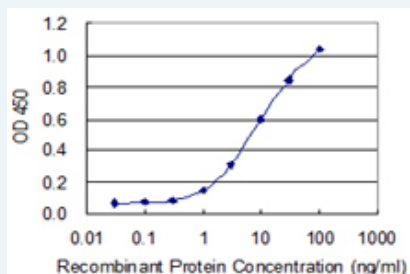
Lane 1: CHRND transfected lysate (Predicted MW: 58.9 KDa).  
Lane 2: Non-transfected lysate.

[Protocol Download](#)

#### Western Blot (Recombinant protein)

[Protocol Download](#)

#### Sandwich ELISA (Recombinant protein)



Detection limit for recombinant GST tagged CHRND is 0.3 ng/ml as a capture antibody.

[Protocol Download](#)

#### ELISA

#### Gene Information

Entrez GeneID: [1144](#)

GeneBank [NM\\_000751](#)

Accession#:

Protein [NP\\_000742](#)

Accession#:

Gene Name: CHRND

Gene Alias: ACHRD,CMS2A,FCCMS,SCCMS

Gene Description: cholinergic receptor, nicotinic, delta

Omim ID: [100720](#), [601462](#), [608930](#)

Gene Ontology: [Hyperlink](#)

**Gene Summary:** The acetylcholine receptor of muscle has 5 subunits of 4 different types: 2 alpha and 1 each of beta, gamma and delta subunits. After acetylcholine binding, the receptor undergoes an extensive conformation change that affects all subunits and leads to opening of an ion-conducting channel across the plasma membrane. [provided by RefSeq]

**Other** cholinergic receptor, nicotinic, delta polypeptide, nicotinic acetylcholine  
**Designations:** receptor delta polypeptide

---

#### **Related Disease**

---

[Genetic Predisposition to Disease](#) [Mental Disorders](#) [Myasthenia Gravis](#) [Obesity](#)  
[Ovarian Failure, Premature](#) [Polycystic Ovary Syndrome](#) [Puberty, Delayed](#)  
[Puberty, Precocious](#) [Thrombophilia](#) [Thymoma](#) [Thymus Neoplasms](#) [Tobacco Use Disorder](#)

---

[服務條款](#) | [隱私權政策](#) | [著作及商標](#) | [網站地圖](#)

©2016 亞諾法生技股份有限公司 Abnova Corporation. 版權所有.