



# SZABO SCANDIC

Part of Europa Biosite

## Produktinformation



Forschungsprodukte & Biochemikalien



Zellkultur & Verbrauchsmaterial



Diagnostik & molekulare Diagnostik



Laborgeräte & Service

Weitere Information auf den folgenden Seiten!  
See the following pages for more information!



### Lieferung & Zahlungsart

siehe unsere [Liefer- und Versandbedingungen](#)

### Zuschläge

- Mindermengenzuschlag
- Trockeneiszuschlag
- Gefahrgutzuschlag
- Expressversand

### SZABO-SCANDIC HandelsgmbH

Quellenstraße 110, A-1100 Wien

T. +43(0)1 489 3961-0

F. +43(0)1 489 3961-7

[mail@szabo-scandic.com](mailto:mail@szabo-scandic.com)

[www.szabo-scandic.com](http://www.szabo-scandic.com)

[linkedin.com/company/szaboscandic](https://www.linkedin.com/company/szaboscandic) 

## CHRNE monoclonal antibody (M01), clone 6A2

Catalog # : H00001145-M01

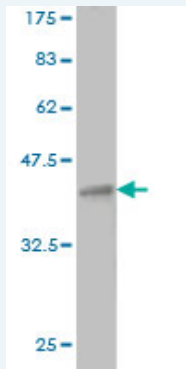
規格 : [ 100 ug ]

[List All](#)

### Specification

<b>Product Description:</b>	Mouse monoclonal antibody raised against a partial recombinant CHRNE.
<b>Immunogen:</b>	CHRNE (NP_000071, 21 a.a. ~ 130 a.a) partial recombinant protein with GST tag. MW of the GST tag alone is 26 KDa.
<b>Sequence:</b>	KNEELRLYHHLFNNDPGRPVREPEDVTISLKVTLTNLISLNEKEETLT TSVWIGIDWQDYRLNYSKDDFGGIETLRVPSELWLP EIVLENNIDGQFG VAYDANLV
<b>Host:</b>	Mouse
<b>Reactivity:</b>	Human
<b>Isotype:</b>	IgG2a Kappa

**Quality Control Testing:** Antibody Reactive Against Recombinant Protein.



Western Blot detection against Immunogen (37.84 KDa) .

**Storage Buffer:** In 1x PBS, pH 7.4

**Storage Instruction:** Store at -20°C or lower. Aliquot to avoid repeated freezing and thawing.

**MSDS:** [Download](#)

**Datasheet:** [Download](#)

### Applications

**Western Blot (Recombinant protein)**

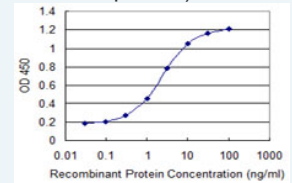
[Protocol Download](#)

**Sandwich ELISA (Recombinant protein)**

### Application Image

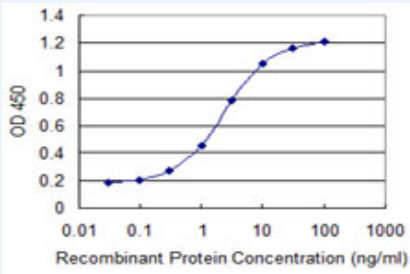
Western Blot (Recombinant protein)

Sandwich ELISA (Recombinant protein)



[enlarge](#)

ELISA



Detection limit for recombinant GST tagged CHRNE is 0.1 ng/ml as a capture antibody.

 [Protocol Download](#)

## ELISA

### Gene Information

Entrez GeneID: [1145](#)

GeneBank [NM\\_000080](#)

Accession#:

Protein [NP\\_000071](#)

Accession#:

Gene Name: CHRNE

Gene Alias: ACHRE,CMS1D,CMS1E,CMS2A,FCCMS,SCCMS

Gene Description: cholinergic receptor, nicotinic, epsilon

Omim ID: [100725](#), [601462](#), [608930](#), [608931](#)

Gene Ontology: [Hyperlink](#)

**Gene Summary:** Acetylcholine receptors at mature mammalian neuromuscular junctions are pentameric protein complexes composed of four subunits in the ratio of two alpha subunits to one beta, one epsilon, and one delta subunit. The acetylcholine receptor changes subunit composition shortly after birth when the epsilon subunit replaces the gamma subunit seen in embryonic receptors. Mutations in the epsilon subunit are associated with congenital myasthenic syndrome. [provided by RefSeq]

**Other Designations:** AchR epsilon subunit, cholinergic receptor, nicotinic, epsilon polypeptide, nicotinic acetylcholine receptor epsilon polypeptide

### Related Disease

[Genetic Predisposition to Disease](#) [Mental Disorders](#) [Myasthenia Gravis](#) [Obesity](#) [Ovarian Failure](#), [Premature Puberty](#), [Polycystic Ovary Syndrome](#) [Puberty, Delayed](#) [Puberty, Precocious](#) [Thrombophilia](#) [Tobacco Use Disorder](#)