



# SZABO SCANDIC

Part of Europa Biosite

## Produktinformation



Forschungsprodukte & Biochemikalien



Zellkultur & Verbrauchsmaterial



Diagnostik & molekulare Diagnostik



Laborgeräte & Service

Weitere Information auf den folgenden Seiten!  
See the following pages for more information!



### Lieferung & Zahlungsart

siehe unsere [Liefer- und Versandbedingungen](#)

### Zuschläge

- Mindermengenzuschlag
- Trockeneiszuschlag
- Gefahrgutzuschlag
- Expressversand

### SZABO-SCANDIC HandelsgmbH

Quellenstraße 110, A-1100 Wien

T. +43(0)1 489 3961-0

F. +43(0)1 489 3961-7

[mail@szabo-scandic.com](mailto:mail@szabo-scandic.com)

[www.szabo-scandic.com](http://www.szabo-scandic.com)

[linkedin.com/company/szaboscandic](https://www.linkedin.com/company/szaboscandic) 

## CHUK monoclonal antibody (M02), clone 1F8

Catalog # : H00001147-M02

規格 : [ 100 ug ]

[List All](#)

### Specification

**Product Description:** Mouse monoclonal antibody raised against a partial recombinant CHUK.

**Immunogen:** CHUK (NP\_001269, 646 a.a. ~ 745 a.a) partial recombinant protein with GST tag. MW of the GST tag alone is 26 KDa.

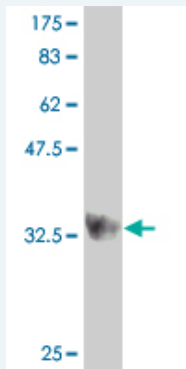
**Sequence:** RQKEIWHLKIACTQSSARSLVGSSLEGAVTPQTSAWLPPTSAEHDHSL  
SCVWTPQDGETSAQMIEENLNCLGHLSTIIHEANEEQGNMMLNDWSWL  
TE

**Host:** Mouse

**Reactivity:** Human

**Isotype:** IgG1 Kappa

**Quality Control Testing:** Antibody Reactive Against Recombinant Protein.



Western Blot detection against Immunogen (36.63 KDa) .

**Storage Buffer:** In 1x PBS, pH 7.4

**Storage Instruction:** Store at -20°C or lower. Aliquot to avoid repeated freezing and thawing.

**MSDS:** [Download](#)

**Datasheet:** [Download](#)

### Applications

**Western Blot (Recombinant protein)**

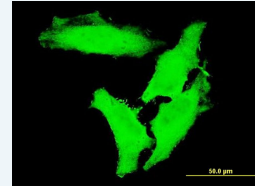
[Protocol Download](#)

**Immunofluorescence**

### Application Image

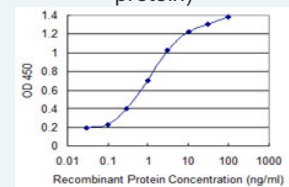
Western Blot (Recombinant protein)

Immunofluorescence



[enlarge](#)

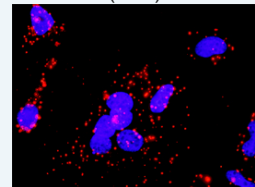
Sandwich ELISA (Recombinant protein)



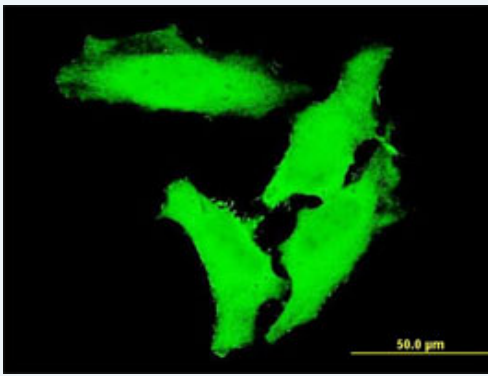
[enlarge](#)

ELISA

*In situ* Proximity Ligation Assay (Cell)



[enlarge](#)

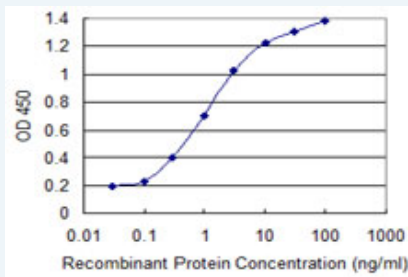


[enlarge this image](#)

Immunofluorescence of monoclonal antibody to CHUK on HeLa cell . [antibody concentration 10 ug/ml]

[Protocol Download](#)

### Sandwich ELISA (Recombinant protein)

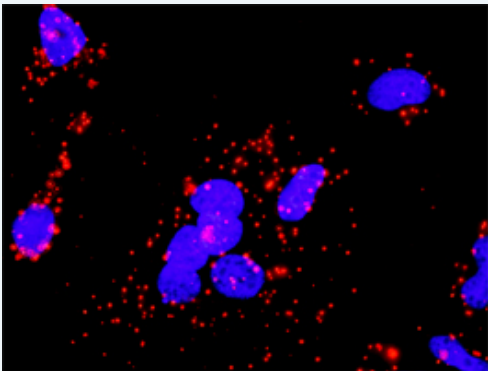


Detection limit for recombinant GST tagged CHUK is 0.03 ng/ml as a capture antibody.

[Protocol Download](#)

### ELISA

### *In situ* Proximity Ligation Assay (Cell)



Proximity Ligation Analysis of protein-protein interactions between PRKCB and CHUK. HeLa cells were stained with anti-PRKCB rabbit purified polyclonal 1:1200 and anti-CHUK mouse monoclonal antibody 1:50. Each red dot represents the detection of protein-protein interaction complex, and nuclei were counterstained with DAPI (blue).

### Gene Information

Entrez GeneID: [1147](#)

GeneBank Accession#: [NM\\_001278](#)

Protein Accession#: [NP\\_001269](#)

Gene Name: CHUK

Gene Alias: IKBKA, IKK-alpha, IKK1, IKKA, NFKBIKA, TCF16

Gene Description: conserved helix-loop-helix ubiquitous kinase

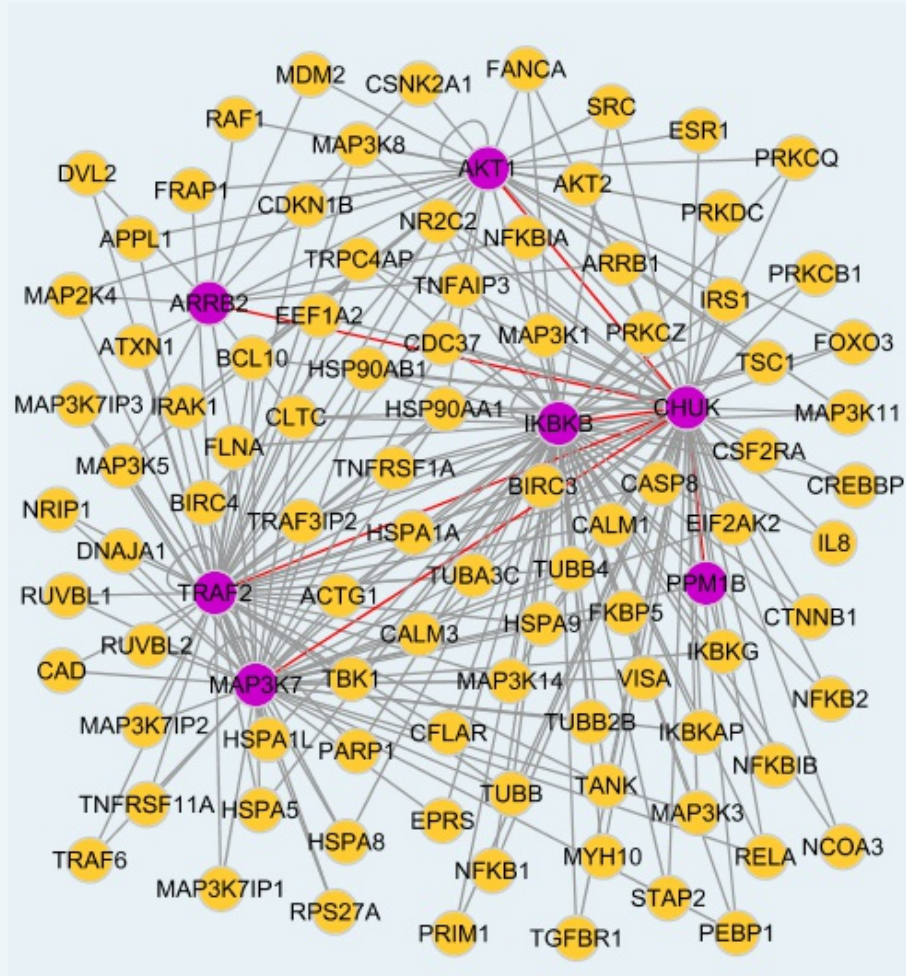
**Omim ID:** [600664](#)

**Gene Ontology:** [Hyperlink](#)

**Gene Summary:** This gene encodes a member of the serine/threonine protein kinase family. The encoded protein, a component of a cytokine-activated protein complex that is an inhibitor of the essential transcription factor NF-kappa-B complex, phosphorylates sites that trigger the degradation of the inhibitor via the ubiquination pathway, thereby activating the transcription factor. [provided by RefSeq]

**Other Designations:** I-kappa-B kinase 1,I-kappa-B kinase-alpha,IKK-a kinase,IkB kinase alpha subunit,Nuclear factor NFkappaB inhibitor kinase alpha,OTTHUMP00000020273,conserved helix-loop ubiquitous kinase

### Interactome



### Gene Pathway

[Acute myeloid leukemia](#) [Adipocytokine signaling pathway](#) [Apoptosis](#)  
[B cell receptor signaling pathway](#) [Chemokine signaling pathway](#) [Chronic myeloid leukemia](#)  
[Epithelial cell signaling in Helicobacter pylori infection](#) [MAPK signaling pathway](#)  
[Pancreatic cancer](#) [Pathways in cancer](#) [Prostate cancer](#) [Small cell lung cancer](#)  
[T cell receptor signaling pathway](#) [Toll-like receptor signaling pathway](#)

### Related Disease

[Alzheimer Disease](#) [Arthritis, Rheumatoid](#) [Asthma](#) [Asthma](#) [Atherosclerosis](#) [Bronchiolitis, Viral](#)  
[Calcinosis](#) [Cardiovascular Diseases](#) [Cerebral Hemorrhage](#) [Cleft Lip](#) [Cleft Palate](#)  
[Coronary Artery Disease](#) [Diabetes Mellitus, Type 2](#) [Disease Progression](#) [Edema](#)  
[Fatty Liver](#) [Genetic Predisposition to Disease](#) [Hematologic Diseases](#) [Hepatitis C](#)

... see more

