



# SZABO SCANDIC

Part of Europa Biosite

## Produktinformation



Forschungsprodukte & Biochemikalien



Zellkultur & Verbrauchsmaterial



Diagnostik & molekulare Diagnostik



Laborgeräte & Service

Weitere Information auf den folgenden Seiten!  
See the following pages for more information!



### Lieferung & Zahlungsart

siehe unsere [Liefer- und Versandbedingungen](#)

### Zuschläge

- Mindermengenzuschlag
- Trockeneiszuschlag
- Gefahrgutzuschlag
- Expressversand

### SZABO-SCANDIC HandelsgmbH

Quellenstraße 110, A-1100 Wien

T. +43(0)1 489 3961-0

F. +43(0)1 489 3961-7

[mail@szabo-scandic.com](mailto:mail@szabo-scandic.com)

[www.szabo-scandic.com](http://www.szabo-scandic.com)

[linkedin.com/company/szaboscandic](https://www.linkedin.com/company/szaboscandic) 

## CHUK monoclonal antibody (M03), clone 4B8

Catalog # : H00001147-M03

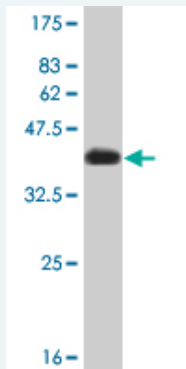
規格 : [ 100 ug ]

[List All](#)

### Specification

<b>Product Description:</b>	Mouse monoclonal antibody raised against a partial recombinant CHUK.
<b>Immunogen:</b>	CHUK (NP_001269, 646 a.a. ~ 745 a.a) partial recombinant protein with GST tag. MW of the GST tag alone is 26 KDa.
<b>Sequence:</b>	RQKEIWHLLKIACTQSSARSLVGSSLEGAVTPQTSAWLPPTSAEHDHSL SCVWTPQDGETSAQMIEENLNCLGHLSTIIHEANEEQGNMMLNDWSWL TE
<b>Host:</b>	Mouse
<b>Reactivity:</b>	Human
<b>Isotype:</b>	IgG1 Kappa

**Quality Control Testing:** Antibody Reactive Against Recombinant Protein.



Western Blot detection against Immunogen (36.63 KDa) .

**Storage Buffer:** In 1x PBS, pH 7.4

**Storage Instruction:** Store at -20°C or lower. Aliquot to avoid repeated freezing and thawing.

**MSDS:** [Download](#)

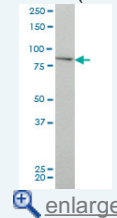
**Datasheet:** [Download](#)

### Applications

Western Blot (Cell lysate)

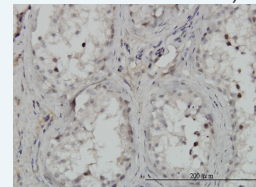
### Application Image

Western Blot (Cell lysate)



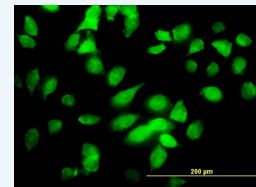
Western Blot (Recombinant protein)

Immunohistochemistry (Formalin/PFA-fixed paraffin-embedded sections)



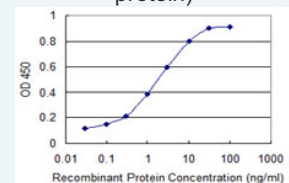
[enlarge](#)

Immunofluorescence



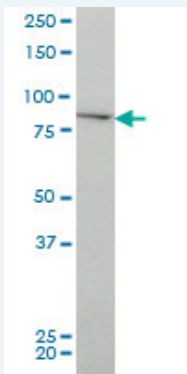
[enlarge](#)

Sandwich ELISA (Recombinant protein)



[enlarge](#)

ELISA



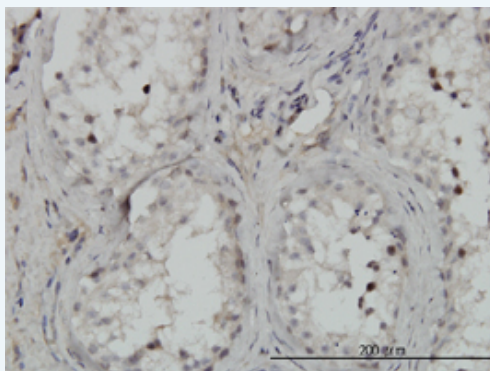
CHUK monoclonal antibody (M03), clone 4B8 Western Blot analysis of CHUK expression in HeLa ( Cat # L013V1 ).

[Protocol Download](#)

#### Western Blot (Recombinant protein)

[Protocol Download](#)

#### Immunohistochemistry (Formalin/PFA-fixed paraffin-embedded sections)

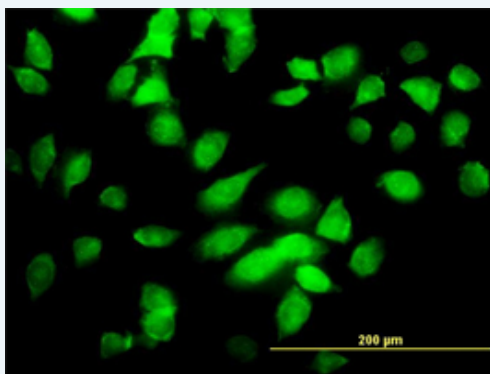


[enlarge this image](#)

Immunoperoxidase of monoclonal antibody to CHUK on formalin-fixed paraffin-embedded human testis. [antibody concentration 3 ug/ml]

[Protocol Download](#)

#### Immunofluorescence

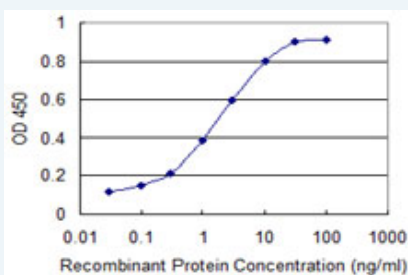


[enlarge this image](#)

Immunofluorescence of monoclonal antibody to CHUK on HeLa cell. [antibody concentration 10 ug/ml]

[Protocol Download](#)

#### Sandwich ELISA (Recombinant protein)



Detection limit for recombinant GST tagged CHUK is 0.03 ng/ml as a capture antibody.

[Protocol Download](#)

## ELISA

---

### Gene Information

---

Entrez GeneID: [1147](#)

---

GeneBank  
Accession#: [NM\\_001278](#)

---

Protein  
Accession#: [NP\\_001269](#)

---

Gene Name: CHUK

---

Gene Alias: IKBKA,IKK-alpha,IKK1,IKKA,NFKBIKA,TCF16

---

Gene  
Description: conserved helix-loop-helix ubiquitous kinase

---

Omim ID: [600664](#)

---

Gene Ontology: [Hyperlink](#)

---

**Gene Summary:** This gene encodes a member of the serine/threonine protein kinase family. The encoded protein, a component of a cytokine-activated protein complex that is an inhibitor of the essential transcription factor NF-kappa-B complex, phosphorylates sites that trigger the degradation of the inhibitor via the ubiquination pathway, thereby activating the transcription factor. [provided by RefSeq]

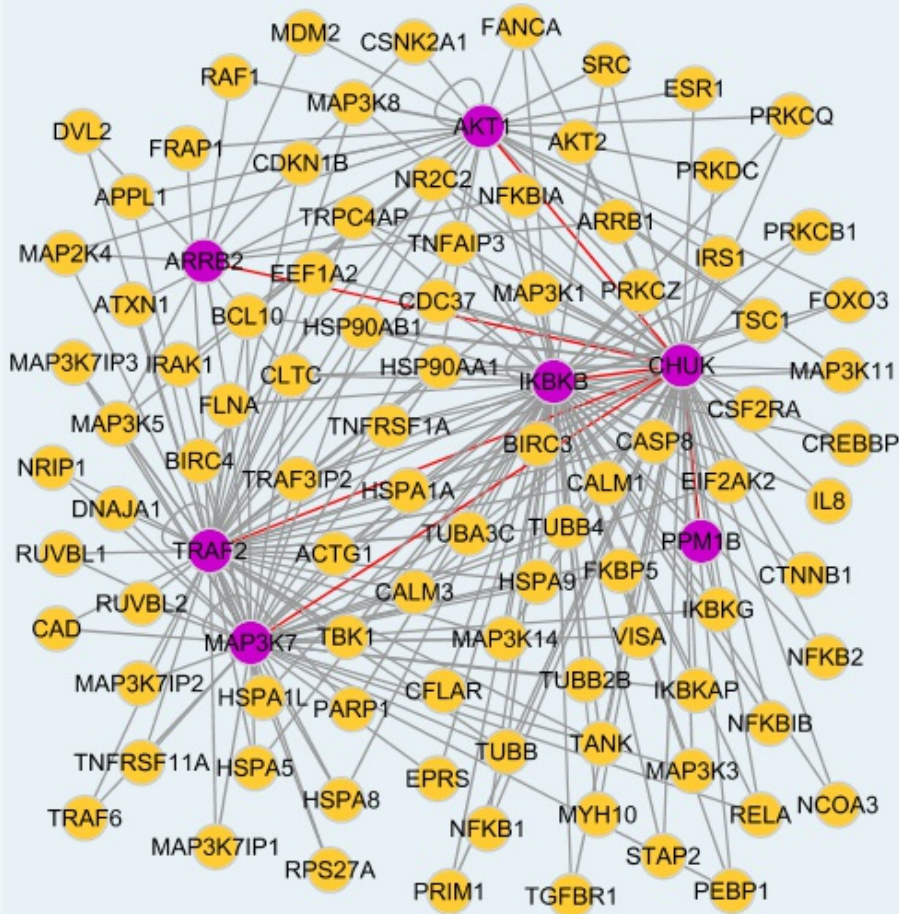
---

**Other Designations:** I-kappa-B kinase 1,I-kappa-B kinase-alpha,IKK-a kinase,IkB kinase alpha subunit,Nuclear factor NFkappaB inhibitor kinase alpha,OTTHUMP00000020273,conserved helix-loop ubiquitous kinase

---

### Interactome

---



### Gene Pathway

[Acute myeloid leukemia](#)
[Adipocytokine signaling pathway](#)
[Apoptosis](#)  
[B cell receptor signaling pathway](#)
[Chemokine signaling pathway](#)
[Chronic myeloid leukemia](#)  
[Epithelial cell signaling in Helicobacter pylori infection](#)
[MAPK signaling pathway](#)  
[Pancreatic cancer](#)
[Pathways in cancer](#)
[Prostate cancer](#)
[Small cell lung cancer](#)  
[T cell receptor signaling pathway](#)
[Toll-like receptor signaling pathway](#)

### Related Disease

[Alzheimer Disease](#)
[Arthritis, Rheumatoid](#)
[Asthma](#)
[Asthma](#)
[Atherosclerosis](#)
[Bronchiolitis](#)
[Viral Calcinosis](#)  
[Cardiovascular Diseases](#)
[Cerebral Hemorrhage](#)
[Cleft Lip](#)
[Cleft Palate](#)  
[Coronary Artery Disease](#)
[Diabetes Mellitus, Type 2](#)
[Disease Progression](#)
[Edema](#)  
[Fatty Liver](#)
[Genetic Predisposition to Disease](#)
[Hematologic Diseases](#)
[Hepatitis C](#)

... see more

服務條款 | 隱私權政策 | 著作及商標 | 網站地圖

©2016 亞諾法生技股份有限公司 Abnova Corporation. 版權所有.