



SZABO SCANDIC

Part of Europa Biosite

Produktinformation



Forschungsprodukte & Biochemikalien



Zellkultur & Verbrauchsmaterial



Diagnostik & molekulare Diagnostik



Laborgeräte & Service

Weitere Information auf den folgenden Seiten!
See the following pages for more information!



Lieferung & Zahlungsart

siehe unsere [Liefer- und Versandbedingungen](#)

Zuschläge

- Mindermengenzuschlag
- Trockeneiszuschlag
- Gefahrgutzuschlag
- Expressversand

SZABO-SCANDIC HandelsgmbH

Quellenstraße 110, A-1100 Wien

T. +43(0)1 489 3961-0

F. +43(0)1 489 3961-7

mail@szabo-scandic.com

www.szabo-scandic.com

[linkedin.com/company/szaboscandic](https://www.linkedin.com/company/szaboscandic) 

CHUK monoclonal antibody (M04), clone 2G4

Catalog # : H00001147-M04

規格 : [100 ug]

[List All](#)

Specification

Product Description: Mouse monoclonal antibody raised against a partial recombinant CHUK.

Immunogen: CHUK (NP_001269, 646 a.a. ~ 745 a.a) partial recombinant protein with GST tag. MW of the GST tag alone is 26 KDa.

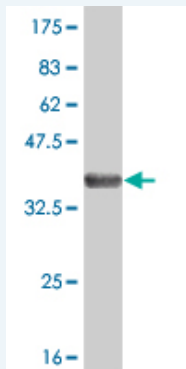
Sequence: RQKEIWHLKIACTQSSARSLVGSSELEGAVTPQTSAWLPPTSAEHDHSL
SCVWTPQDGETSAQMIEENLNCLGHLSTIIHEANEEQGNMMLNDWSWL
TE

Host: Mouse

Reactivity: Human

Isotype: IgG1 Kappa

Quality Control Testing: Antibody Reactive Against Recombinant Protein.



Western Blot detection against Immunogen (36.63 KDa) .

Storage Buffer: In 1x PBS, pH 7.4

Storage Instruction: Store at -20°C or lower. Aliquot to avoid repeated freezing and thawing.

MSDS: [Download](#)

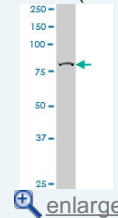
Datasheet: [Download](#)

Applications

Western Blot (Cell lysate)

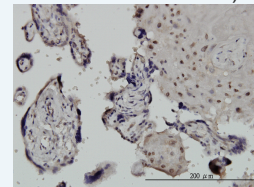
Application Image

Western Blot (Cell lysate)



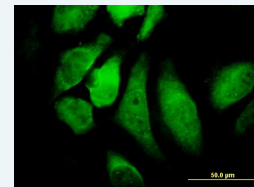
Western Blot (Recombinant protein)

Immunohistochemistry
(Formalin/PFA-fixed paraffin-embedded sections)



[enlarge](#)

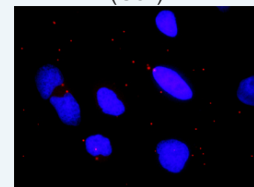
Immunofluorescence



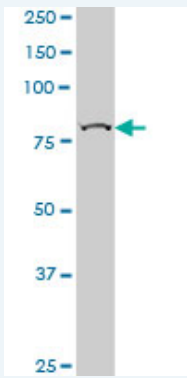
[enlarge](#)

ELISA

In situ Proximity Ligation Assay
(Cell)



[enlarge](#)



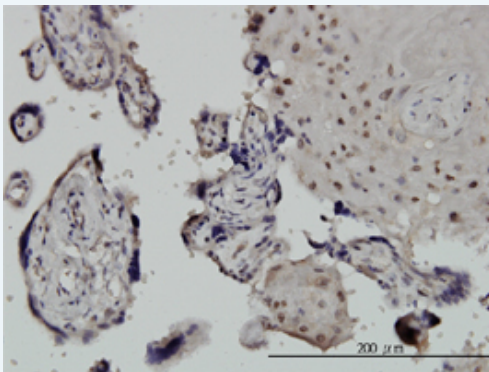
CHUK monoclonal antibody (M04), clone 2G4 Western Blot analysis of CHUK expression in Jurkat (Cat # L017V1).

 [Protocol Download](#)

Western Blot (Recombinant protein)

 [Protocol Download](#)

Immunohistochemistry (Formalin/PFA-fixed paraffin-embedded sections)

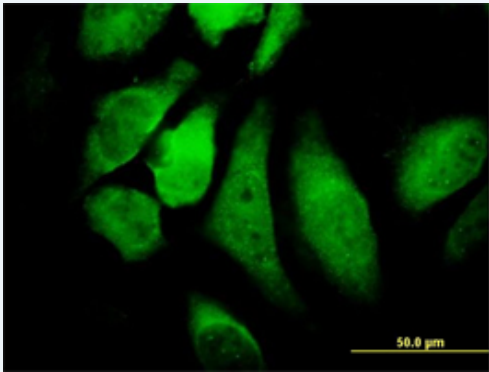


 [enlarge this image](#)

Immunoperoxidase of monoclonal antibody to CHUK on formalin-fixed paraffin-embedded human placenta. [antibody concentration 3 ug/ml]

 [Protocol Download](#)

Immunofluorescence



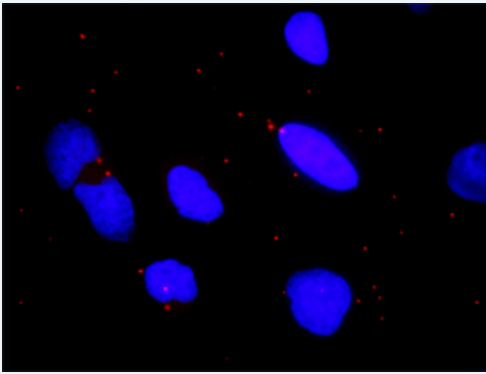
 [enlarge this image](#)

Immunofluorescence of monoclonal antibody to CHUK on HeLa cell. [antibody concentration 10 ug/ml]

 [Protocol Download](#)

ELISA

In situ Proximity Ligation Assay (Cell)



Proximity Ligation Analysis of protein-protein interactions between IKBKB and CHUK. HeLa cells were stained with anti-IKBKB rabbit purified polyclonal 1:1200 and anti-CHUK mouse monoclonal antibody 1:50. Each red dot represents the detection of protein-protein interaction complex, and nuclei were counterstained with DAPI (blue).

Gene Information

Entrez GeneID: [1147](#)

**GeneBank
Accession#:** [NM_001278](#)

**Protein
Accession#:** [NP_001269](#)

Gene Name: CHUK

Gene Alias: IKBKA,IKK-alpha,IKK1,IKKA,NFKBIKA,TCF16

**Gene
Description:** conserved helix-loop-helix ubiquitous kinase

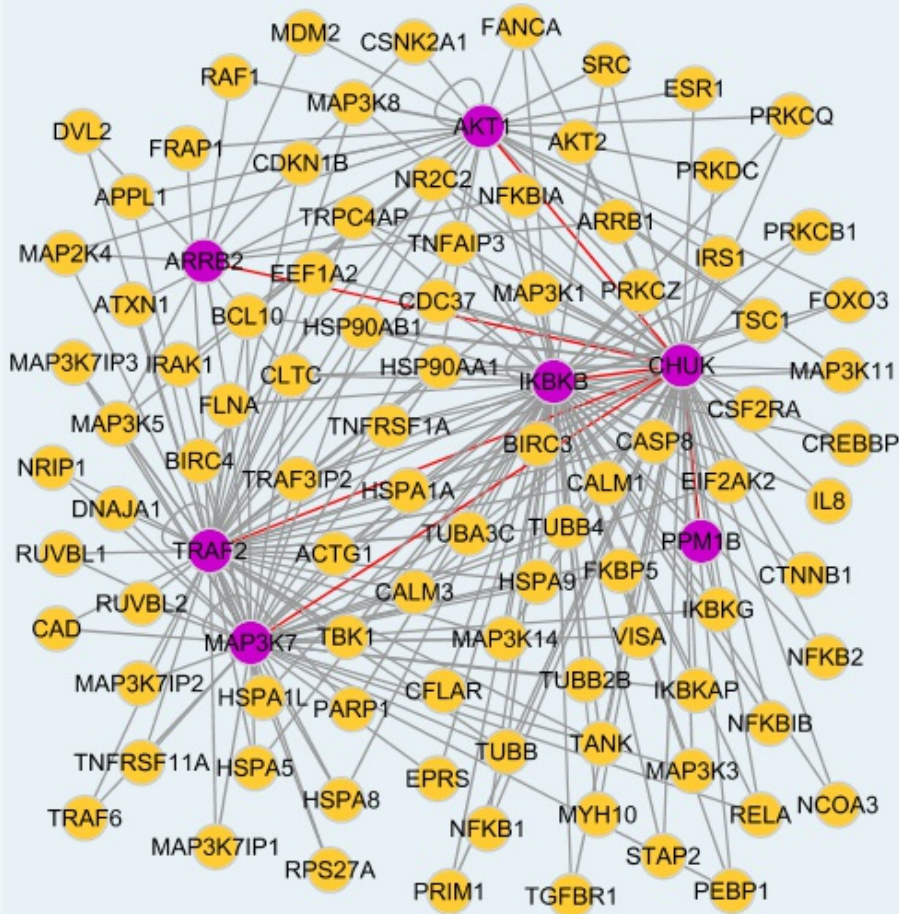
Omim ID: [600664](#)

Gene Ontology: [Hyperlink](#)

Gene Summary: This gene encodes a member of the serine/threonine protein kinase family. The encoded protein, a component of a cytokine-activated protein complex that is an inhibitor of the essential transcription factor NF-kappa-B complex, phosphorylates sites that trigger the degradation of the inhibitor via the ubiquination pathway, thereby activating the transcription factor. [provided by RefSeq]

**Other
Designations:** I-kappa-B kinase 1,I-kappa-B kinase-alpha,IKK-a kinase,IkB kinase alpha subunit,Nuclear factor NFkappaB inhibitor kinase alpha,OTTHUMP00000020273,conserved helix-loop ubiquitous kinase

Interactome



Gene Pathway

[Acute myeloid leukemia](#)
[Adipocytokine signaling pathway](#)
[Apoptosis](#)
[B cell receptor signaling pathway](#)
[Chemokine signaling pathway](#)
[Chronic myeloid leukemia](#)
[Epithelial cell signaling in Helicobacter pylori infection](#)
[MAPK signaling pathway](#)
[Pancreatic cancer](#)
[Pathways in cancer](#)
[Prostate cancer](#)
[Small cell lung cancer](#)
[T cell receptor signaling pathway](#)
[Toll-like receptor signaling pathway](#)

Related Disease

[Alzheimer Disease](#)
[Arthritis, Rheumatoid](#)
[Asthma](#)
[Asthma](#)
[Atherosclerosis](#)
[Bronchiolitis](#)
[Viral Calcinosis](#)
[Cardiovascular Diseases](#)
[Cerebral Hemorrhage](#)
[Cleft Lip](#)
[Cleft Palate](#)
[Coronary Artery Disease](#)
[Diabetes Mellitus, Type 2](#)
[Disease Progression](#)
[Edema](#)
[Fatty Liver](#)
[Genetic Predisposition to Disease](#)
[Hematologic Diseases](#)
[Hepatitis C](#)

... see more

服務條款 | 隱私權政策 | 著作及商標 | 網站地圖

©2016 亞諾法生技股份有限公司 Abnova Corporation. 版權所有.