



SZABO SCANDIC

Part of Europa Biosite

Produktinformation



Forschungsprodukte & Biochemikalien



Zellkultur & Verbrauchsmaterial



Diagnostik & molekulare Diagnostik



Laborgeräte & Service

Weitere Information auf den folgenden Seiten!
See the following pages for more information!



Lieferung & Zahlungsart

siehe unsere [Liefer- und Versandbedingungen](#)

Zuschläge

- Mindermengenzuschlag
- Trockeneiszuschlag
- Gefahrgutzuschlag
- Expressversand

SZABO-SCANDIC HandelsgmbH

Quellenstraße 110, A-1100 Wien

T. +43(0)1 489 3961-0

F. +43(0)1 489 3961-7

mail@szabo-scandic.com

www.szabo-scandic.com

[linkedin.com/company/szaboscandic](https://www.linkedin.com/company/szaboscandic) 

CKB polyclonal antibody (A01)

Catalog # : H00001152-A01

規格 : [50 uL]

[List All](#)

Specification

Product Description: Mouse polyclonal antibody raised against a full-length recombinant CKB.

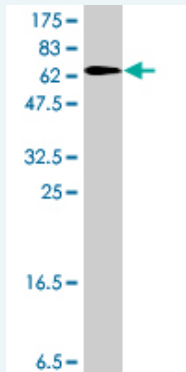
Immunogen: CKB (AAH01190, 1 a.a. ~ 381 a.a) full-length recombinant protein with GST tag.

Sequence: MPFSNSHNALKLRFPAEDEFDPDLSAHNNHMAKVLTPELYAELRAKSTPS
GFTLDDVIQTVGVDNPGHPYIMTVGCVAGDEESYEVFKDLFDPIIEDRHGG
YKPSDEHKTDLNPDLNQGDDLDPNYVLSRVRTGRSIRGFCLPPHCSR
GERRAIEKLAVEALSSLDGDLAGRYALKSMTEAEQQQLIDDFLFDKPV
SPLLLASGMARDWPDARGIWHNDNKTFVWVNEEDHLRVISMQKGGNM
KEVFTRFCTGLTQIETLFKSKDYEFMWNPHLGYILT CPSNLGTGLRAGV
HIKLPNLGKHEKFSEVLKRLRLQKRGTGGVDTAAVGGVFDVSNADRLGF
SEVELVQMVVDGVKLLIEMEQRLEQGQAIDDLMPAQK

Host: Mouse

Reactivity: Human

Quality Control Testing: Antibody Reactive Against Recombinant Protein.



Western Blot detection against Immunogen (68.02 KDa) .

Storage Buffer: 50 % glycerol

Storage Instruction: Store at -20°C or lower. Aliquot to avoid repeated freezing and thawing.

MSDS: [Download](#)

Datasheet: [Download](#)

Publication Reference

- [Involvement of creatine kinase B in hepatitis C virus genome replication through interaction with the viral NS4A protein.](#)
Hara H, Aizaki H, Matsuda M, Shinkai-Ouchi F, Inoue Y, Murakami K, Shoji I, Kawakami H, Matsuura Y, Lai MM, Miyamura T, Wakita T, Suzuki T. J Virol. 2009 May;83(10):5137-47. Epub 2009 Mar 4.

Applications

Application Image

Western Blot (Recombinant protein)

ELISA

ELISA

Gene Information

Entrez GeneID: [1152](#)**GeneBank
Accession#:** [BC001190](#)**Protein
Accession#:** [AAH01190](#)**Gene Name:** CKB**Gene Alias:** B-CK,CKBB**Gene
Description:** creatine kinase, brain**Omim ID:** [123280](#)**Gene Ontology:** [Hyperlink](#)

Gene Summary: The protein encoded by this gene is a cytoplasmic enzyme involved in energy homeostasis. The encoded protein reversibly catalyzes the transfer of phosphate between ATP and various phosphogens such as creatine phosphate. It acts as a homodimer in brain as well as in other tissues, and as a heterodimer with a similar muscle isozyme in heart. The encoded protein is a member of the ATP:guanido phosphotransferase protein family. A pseudogene of this gene has been characterized. [provided by RefSeq]

**Other
Designations:** brain creatine kinase,creatine kinase B-chain,creatine kinase-B**Gene Pathway**

[Arginine and proline metabolism](#) [Metabolic pathways](#)**Related Disease**

[Macular Degeneration](#)