



SZABO SCANDIC

Part of Europa Biosite

Produktinformation



Forschungsprodukte & Biochemikalien



Zellkultur & Verbrauchsmaterial



Diagnostik & molekulare Diagnostik



Laborgeräte & Service

Weitere Information auf den folgenden Seiten!
See the following pages for more information!



Lieferung & Zahlungsart

siehe unsere [Liefer- und Versandbedingungen](#)

Zuschläge

- Mindermengenzuschlag
- Trockeneiszuschlag
- Gefahrgutzuschlag
- Expressversand

SZABO-SCANDIC HandelsgmbH

Quellenstraße 110, A-1100 Wien

T. +43(0)1 489 3961-0

F. +43(0)1 489 3961-7

mail@szabo-scandic.com

www.szabo-scandic.com

[linkedin.com/company/szaboscandic](https://www.linkedin.com/company/szaboscandic) 

CKB polyclonal antibody (A03)

Catalog # : H00001152-A03

規格 : [50 uL]

List All

Specification

Product Description: Mouse polyclonal antibody raised against a partial recombinant CKB.

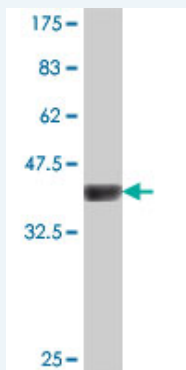
Immunogen: CKB (NP_001814, 281 a.a. ~ 381 a.a) partial recombinant protein with GST tag.

Sequence: LTCPSNLGTGLRAGVHIKLPNLGKHEKFSEVLKRLRLQKRGTGGVDTAA
VGGVFDVSNADRLGFSEVELVQMVDGVKLLIEMEQRLEQQQAIDDLMP
AQK

Host: Mouse

Reactivity: Human

Quality Control Testing: Antibody Reactive Against Recombinant Protein.



Western Blot detection against Immunogen (37.22 KDa) .

Storage Buffer: 50 % glycerol


Storage Instruction: Store at -20°C or lower. Aliquot to avoid repeated freezing and thawing.

MSDS:  [Download](#)

Datasheet:  [Download](#)

Applications

Western Blot (Recombinant protein)

 [Protocol Download](#)

ELISA

Gene Information

Entrez GeneID: [1152](#)

GeneBank Accession#: [NM_001823](#)

Application Image

Western Blot (Recombinant protein)

ELISA

Protein Accession#: [NP_001814](#)

Gene Name: CKB

Gene Alias: B-CK,CKBB

Gene Description: creatine kinase, brain

Omim ID: [123280](#)

Gene Ontology: [Hyperlink](#)

Gene Summary: The protein encoded by this gene is a cytoplasmic enzyme involved in energy homeostasis. The encoded protein reversibly catalyzes the transfer of phosphate between ATP and various phosphogens such as creatine phosphate. It acts as a homodimer in brain as well as in other tissues, and as a heterodimer with a similar muscle isozyme in heart. The encoded protein is a member of the ATP:guanido phosphotransferase protein family. A pseudogene of this gene has been characterized. [provided by RefSeq]

Other Designations: brain creatine kinase,creatine kinase B-chain,creatine kinase-B

Gene Pathway

[Arginine and proline metabolism](#) [Metabolic pathways](#)

Related Disease

[Macular Degeneration](#)