



# SZABO SCANDIC

Part of Europa Biosite

## Produktinformation



Forschungsprodukte & Biochemikalien



Zellkultur & Verbrauchsmaterial



Diagnostik & molekulare Diagnostik



Laborgeräte & Service

Weitere Information auf den folgenden Seiten!  
See the following pages for more information!



### Lieferung & Zahlungsart

siehe unsere [Liefer- und Versandbedingungen](#)

### Zuschläge

- Mindermengenzuschlag
- Trockeneiszuschlag
- Gefahrgutzuschlag
- Expressversand

### SZABO-SCANDIC HandelsgmbH

Quellenstraße 110, A-1100 Wien

T. +43(0)1 489 3961-0

F. +43(0)1 489 3961-7

[mail@szabo-scandic.com](mailto:mail@szabo-scandic.com)

[www.szabo-scandic.com](http://www.szabo-scandic.com)

[linkedin.com/company/szaboscandic](https://www.linkedin.com/company/szaboscandic) 

## CKB monoclonal antibody (M01), clone 3D5-3D11

Catalog # : H00001152-M01

規格 : [ 100 ug ]

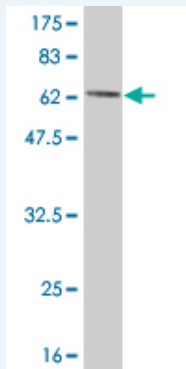
[List All](#)

### Specification

<b>Product Description:</b>	Mouse monoclonal antibody raised against a full length recombinant CKB.
<b>Immunogen:</b>	CKB (AAH01190, 1 a.a. ~ 381 a.a) full-length recombinant protein with GST tag. MW of the GST tag alone is 26 KDa.
<b>Sequence:</b>	MPFSNSHNALKLRFPAEDEFDPDLSAHNNHMAKVLTPELYAELRAKSTPS GFTLDDVIQTGVDPNGHPYIMTVGCVAGDEESYEVFKDLFDPIIEDRHGG YKPSDEHKTDLNPDLQGGDDLDPNYLSSRVRTGRSIRGFCLPPHCSR GERRAIEKLAVEALSSLDGDLAGRYALKSMTEAEQQQLIDDFLFDKPV SPLLLASGMARDWPDARGIWHNDNKTFLLVWVNEEDHLRVISMQKGGNM KEVFTRFCTGLTQIETLFKSKDYEFMWNPHLGYILTCPNSLGTGLRAGV HIKLPNLGKHEKFSEVLKRLRLQKRGTGGVDTAAVGGVFVSNADRLGF SEVELVQMVVDGVKLLIEMEQRLEQGGQAIDDLMPAQK
<b>Host:</b>	Mouse
<b>Reactivity:</b>	Human
<b>Isotype:</b>	IgG1 Kappa

**Quality Control** Antibody Reactive Against Recombinant Protein.

**Testing:**



Western Blot detection against Immunogen (67.65 KDa) .

**Storage Buffer:** In 1x PBS, pH 7.4

**Storage Instruction:** Store at -20°C or lower. Aliquot to avoid repeated freezing and thawing.

**MSDS:** [Download](#)

**Datasheet:** [Download](#)

### Applications

**Western Blot (Recombinant protein)**

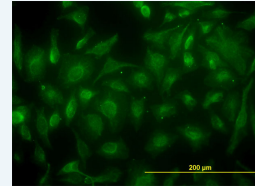
[Protocol Download](#)

**Immunofluorescence**

### Application Image

Western Blot (Recombinant protein)

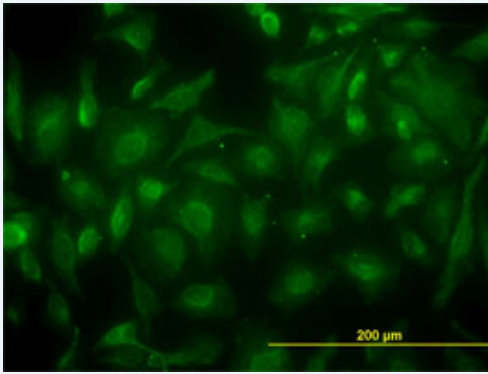
Immunofluorescence



[enlarge](#)

Sandwich ELISA (Recombinant protein)

ELISA



[enlarge this image](#)

Immunofluorescence of monoclonal antibody to CKB on HeLa cell. [antibody concentration 30 ug/ml]

[Protocol Download](#)

### Sandwich ELISA (Recombinant protein)

Detection limit for recombinant GST tagged CKB is approximately 3ng/ml as a capture antibody.

[Protocol Download](#)

### ELISA

#### Gene Information

Entrez GeneID: [1152](#)

GeneBank Accession#: [BC001190](#)

Protein Accession#: [AAH01190](#)

Gene Name: CKB

Gene Alias: B-CK,CKBB

Gene Description: creatine kinase, brain

Omim ID: [123280](#)

Gene Ontology: [Hyperlink](#)

**Gene Summary:** The protein encoded by this gene is a cytoplasmic enzyme involved in energy homeostasis. The encoded protein reversibly catalyzes the transfer of phosphate between ATP and various phosphagens such as creatine phosphate. It acts as a homodimer in brain as well as in other tissues, and as a heterodimer with a similar muscle isozyme in heart. The encoded protein is a member of the ATP:guanido phosphotransferase protein family. A pseudogene of this gene has been characterized. [provided by RefSeq]

Other Designations: brain creatine kinase,creatine kinase B-chain,creatine kinase-B

#### Gene Pathway

[Arginine and proline metabolism](#) [Metabolic pathways](#)

#### Related Disease

[Macular Degeneration](#)

