



SZABO SCANDIC

Part of Europa Biosite

Produktinformation



Forschungsprodukte & Biochemikalien



Zellkultur & Verbrauchsmaterial



Diagnostik & molekulare Diagnostik



Laborgeräte & Service

Weitere Information auf den folgenden Seiten!
See the following pages for more information!



Lieferung & Zahlungsart

siehe unsere [Liefer- und Versandbedingungen](#)

Zuschläge

- Mindermengenzuschlag
- Trockeneiszuschlag
- Gefahrgutzuschlag
- Expressversand

SZABO-SCANDIC HandelsgmbH

Quellenstraße 110, A-1100 Wien

T. +43(0)1 489 3961-0

F. +43(0)1 489 3961-7

mail@szabo-scandic.com

www.szabo-scandic.com

[linkedin.com/company/szaboscandic](https://www.linkedin.com/company/szaboscandic) 



CISH purified MaxPab mouse polyclonal antibody (B01P) MaxPab®

Catalog # : H00001154-B01P

規格 : [50 ug]

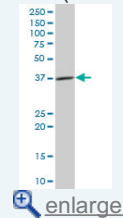
[List All](#)

Specification

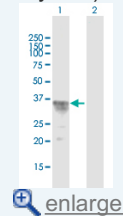
Product Description:	Mouse polyclonal antibody raised against a full-length human CISH protein.
Immunogen:	CISH (NP_659508.1, 1 a.a. ~ 258 a.a) full-length human protein.
Sequence:	MVLCVQGPRPLLAVERTGQRPLWAPSLELPKPVMQPLPAGAFLEEVAE GTPAQTESEPKVLDPEEDLLCIAKTF SYLRESGWYWGSIASEARQLQ KMPEGTFLVRDSTHPSYLF T LSVKTRRGPTNVRIEYADSSFRLDSNCLSR PRILAFPDVVSLVQHYVASCTADTRSDSPDPAPTALPMPKEDAPSDPAL PAPPPATAVHLKLVQPFVRRSSARSLQHL CRLVINRLVADVDCLPLPRM ADYLRQYPFQL
Host:	Mouse
Reactivity:	Human
Quality Control Testing:	Antibody reactive against mammalian transfected lysate.
Storage Buffer:	In 1x PBS, pH 7.4
Storage Instruction:	Store at -20°C or lower. Aliquot to avoid repeated freezing and thawing.
MSDS:	 Download
Datasheet:	 Download

Application Image

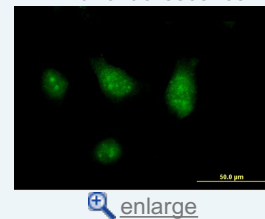
Western Blot (Tissue lysate)



Western Blot (Transfected lysate)

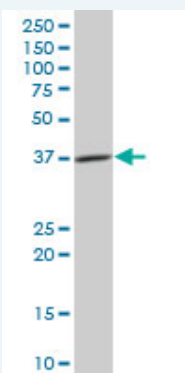


Immunofluorescence



Applications

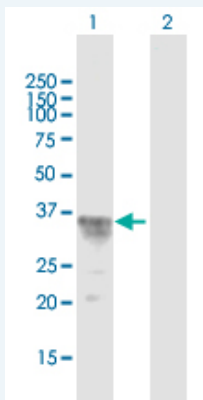
Western Blot (Tissue lysate)



CISH MaxPab polyclonal antibody. Western Blot analysis of CISH expression in human spleen.

 [Protocol Download](#)

Western Blot (Transfected lysate)

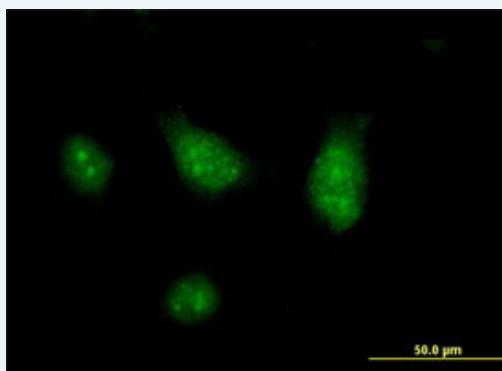


Western Blot analysis of CISH expression in transfected 293T cell line ([H00001154-T01](#)) by CISH MaxPab polyclonal antibody.

Lane 1: CISH transfected lysate(28.38 KDa).
Lane 2: Non-transfected lysate.

[Protocol Download](#)

Immunofluorescence



enlarge this image

Immunofluorescence of purified MaxPab antibody to CISH on HeLa cell. [antibody concentration 10 ug/ml]

[Protocol Download](#)

Gene Information

Entrez GeneID: [1154](#)

GeneBank [NM_145071](#)
Accession#:

Protein [NP_659508.1](#)
Accession#:

Gene Name: CISH

Gene Alias: CIS,CIS-1,G18,SOCS

Gene Description: cytokine inducible SH2-containing protein

Omim ID: [602441](#)

Gene Ontology: [Hyperlink](#)

Gene Summary: The protein encoded by this gene contains a SH2 domain and a SOCS box domain. The protein thus belongs to the cytokine-induced STAT inhibitor (CIS), also known as suppressor of cytokine signaling (SOCS) or STAT-induced STAT inhibitor (SSI), protein family. CIS family members are known to be cytokine-inducible negative regulators of cytokine signaling. The expression of this gene can be induced by IL2, IL3, GM-CSF and EPO in hematopoietic cells. Proteasome-mediated degradation of this protein has been shown to be involved in the

inactivation of the erythropoietin receptor. Multiple transcript variants encoding different isoforms have been found for this gene. [provided by RefSeq]

Other Designations: cytokine-inducible SH2-containing protein, cytokine-inducible inhibitor of signaling type 1B, suppressor of cytokine signaling

Gene Pathway

[Jak-STAT signaling pathway](#)

Related Disease

[Bacteremia](#) [Cardiovascular Diseases](#) [Diabetes Mellitus, Type 2](#) [Edema](#)
[Genetic Predisposition to Disease](#) [Malaria](#) [Tuberculosis](#)

[服務條款](#) | [隱私權政策](#) | [著作及商標](#) | [網站地圖](#)

©2016 亞諾法生技股份有限公司 Abnova Corporation. 版權所有.