



SZABO SCANDIC

Part of Europa Biosite

Produktinformation



Forschungsprodukte & Biochemikalien



Zellkultur & Verbrauchsmaterial



Diagnostik & molekulare Diagnostik



Laborgeräte & Service

Weitere Information auf den folgenden Seiten!
See the following pages for more information!



Lieferung & Zahlungsart

siehe unsere [Liefer- und Versandbedingungen](#)

Zuschläge

- Mindermengenzuschlag
- Trockeneiszuschlag
- Gefahrgutzuschlag
- Expressversand

SZABO-SCANDIC HandelsgmbH

Quellenstraße 110, A-1100 Wien

T. +43(0)1 489 3961-0

F. +43(0)1 489 3961-7

mail@szabo-scandic.com

www.szabo-scandic.com

[linkedin.com/company/szaboscandic](https://www.linkedin.com/company/szaboscandic) 

CISH purified MaxPab rabbit polyclonal antibody (D01P) MaxPab®

Catalog # : H00001154-D01P

規格 : [100 ug]

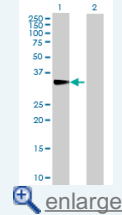
[List All](#)

Specification

Product Description:	Rabbit polyclonal antibody raised against a full-length human CISH protein.
Immunogen:	CISH (NP_659508.1, 1 a.a. ~ 258 a.a) full-length human protein.
Sequence:	MVLCVQGPRPLLAVERTGQRPLWAPSLELPKPVMQPLPAGAFLEEVAE GTPAQTESEPKVLDPEEDLLCIAKTF SYLRESGWYWGSIASEARQLQ KMPEGTFLVRDSTHPSYLF TLSVKTRRGPTNVRIEYADSSFRLDSNCLSR PRILAFPVSLVQHYVASCTADTRSDSPDPAPTALPMPKEDAPSDPAL PAPPATAVHLKLVQPFVRRSSARSLQHL CRLVINRLVADVDCPLPRRM ADYLRQYPFQL
Host:	Rabbit
Reactivity:	Human
Quality Control Testing:	Antibody reactive against mammalian transfected lysate.
Storage Buffer:	In 1x PBS, pH 7.4
Storage Instruction:	Store at -20°C or lower. Aliquot to avoid repeated freezing and thawing.
MSDS:	Download
Datasheet:	Download

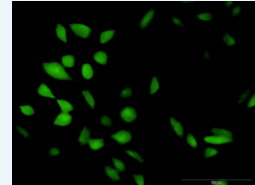
Application Image

Western Blot (Transfected lysate)



[enlarge](#)

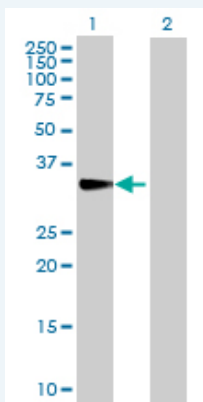
Immunofluorescence



[enlarge](#)

Applications

Western Blot (Transfected lysate)



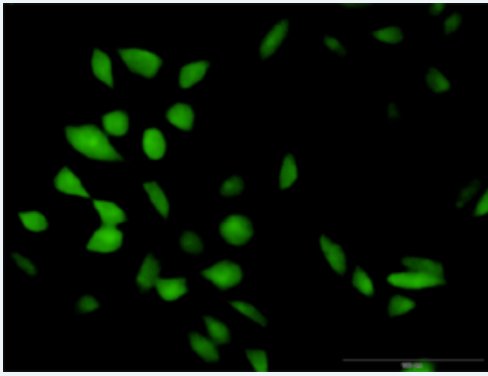
Western Blot analysis of CISH expression in transfected 293T cell line (H00001154-T01) by CISH MaxPab polyclonal antibody.

Lane 1: CISH transfected lysate(28.70 KDa).

Lane 2: Non-transfected lysate.


[Protocol Download](#)

Immunofluorescence



[enlarge this image](#)

Immunofluorescence of purified MaxPab antibody to CISH on HeLa cell. [antibody concentration 10 ug/ml]

 [Protocol Download](#)

Gene Information

Entrez GeneID: [1154](#)

**GeneBank
Accession#:** [NM_145071](#)

**Protein
Accession#:** [NP_659508.1](#)

Gene Name: CISH

Gene Alias: CIS,CIS-1,G18,SOCS

**Gene
Description:** cytokine inducible SH2-containing protein

Omim ID: [602441](#)

Gene Ontology: [Hyperlink](#)

Gene Summary: The protein encoded by this gene contains a SH2 domain and a SOCS box domain. The protein thus belongs to the cytokine-induced STAT inhibitor (CIS), also known as suppressor of cytokine signaling (SOCS) or STAT-induced STAT inhibitor (SSI), protein family. CIS family members are known to be cytokine-inducible negative regulators of cytokine signaling. The expression of this gene can be induced by IL2, IL3, GM-CSF and EPO in hematopoietic cells. Proteasome-mediated degradation of this protein has been shown to be involved in the inactivation of the erythropoietin receptor. Multiple transcript variants encoding different isoforms have been found for this gene. [provided by RefSeq]

**Other
Designations:** cytokine-inducible SH2-containing protein,cytokine-inducible inhibitor of signaling type 1B,suppressor of cytokine signaling

Gene Pathway

[Jak-STAT signaling pathway](#)

Related Disease

[Bacteremia](#) [Cardiovascular Diseases](#) [Diabetes Mellitus, Type 2](#) [Edema](#)
[Genetic Predisposition to Disease](#) [Malaria](#) [Tuberculosis](#)