



# SZABO SCANDIC

Part of Europa Biosite

## Produktinformation



Forschungsprodukte & Biochemikalien



Zellkultur & Verbrauchsmaterial



Diagnostik & molekulare Diagnostik



Laborgeräte & Service

Weitere Information auf den folgenden Seiten!  
See the following pages for more information!



### Lieferung & Zahlungsart

siehe unsere [Liefer- und Versandbedingungen](#)

### Zuschläge

- Mindermengenzuschlag
- Trockeneiszuschlag
- Gefahrgutzuschlag
- Expressversand

### SZABO-SCANDIC HandelsgmbH

Quellenstraße 110, A-1100 Wien

T. +43(0)1 489 3961-0

F. +43(0)1 489 3961-7

[mail@szabo-scandic.com](mailto:mail@szabo-scandic.com)

[www.szabo-scandic.com](http://www.szabo-scandic.com)

[linkedin.com/company/szaboscandic](https://www.linkedin.com/company/szaboscandic) 

## CISH 293T Cell Transient Overexpression Lysate(Denatured)

Catalog # : H00001154-T01

規格 : [ 100 uL ]

[List All](#)

### Specification

**Transfected Cell Line:** 293T

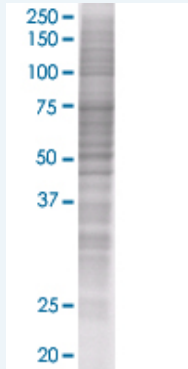
**Plasmid:** pCMV-CISH full-length

**Host:** Human

**Theoretical MW (kDa):** 28.7

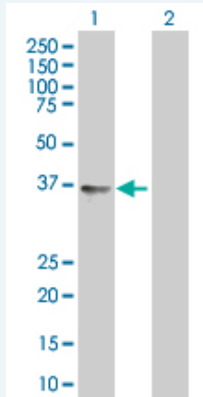
**Quality Control Testing:** Transient overexpression cell lysate was tested with Anti-CISH antibody (H00001154-B01) by Western Blots.

#### SDS-PAGE Gel



CISH transfected lysate

#### Western Blot



Lane 1: CISH transfected lysate ( 28.7 KDa).

Lane 2: Non-transfected lysate.

**Storage Buffer:** 1X Sample Buffer (50 mM Tris-HCl, 2% SDS, 10% glycerol, 300 mM 2-mercaptoethanol, 0.01% Bromophenol blue)

**Storage Instruction:** Store at -80°C. Aliquot to avoid repeated freezing and thawing.

**MSDS:**  [Download](#)

### Applications

### Application Image

Western Blot

## Western Blot

### Gene Information

Entrez GeneID: [1154](#)

GeneBank Accession#: [NM\\_145071](#)

Protein Accession#: [NP\\_659508](#)

Gene Name: CISH

Gene Alias: CIS,CIS-1,G18,SOCS

Gene Description: cytokine inducible SH2-containing protein

Omim ID: [602441](#)

Gene Ontology: [Hyperlink](#)

**Gene Summary:** The protein encoded by this gene contains a SH2 domain and a SOCS box domain. The protein thus belongs to the cytokine-induced STAT inhibitor (CIS), also known as suppressor of cytokine signaling (SOCS) or STAT-induced STAT inhibitor (SSI), protein family. CIS family members are known to be cytokine-inducible negative regulators of cytokine signaling. The expression of this gene can be induced by IL2, IL3, GM-CSF and EPO in hematopoietic cells. Proteasome-mediated degradation of this protein has been shown to be involved in the inactivation of the erythropoietin receptor. Multiple transcript variants encoding different isoforms have been found for this gene. [provided by RefSeq]

**Other Designations:** cytokine-inducible SH2-containing protein,cytokine-inducible inhibitor of signaling type 1B,suppressor of cytokine signaling

### Gene Pathway

[Jak-STAT signaling pathway](#)

### Related Disease

[Bacteremia](#) [Cardiovascular Diseases](#) [Diabetes Mellitus, Type 2](#) [Edema](#)  
[Genetic Predisposition to Disease](#) [Malaria](#) [Tuberculosis](#)