



# SZABO SCANDIC

Part of Europa Biosite

## Produktinformation



Forschungsprodukte & Biochemikalien



Zellkultur & Verbrauchsmaterial



Diagnostik & molekulare Diagnostik



Laborgeräte & Service

Weitere Information auf den folgenden Seiten!  
See the following pages for more information!



### Lieferung & Zahlungsart

siehe unsere [Liefer- und Versandbedingungen](#)

### Zuschläge

- Mindermengenzuschlag
- Trockeneiszuschlag
- Gefahrgutzuschlag
- Expressversand

### SZABO-SCANDIC HandelsgmbH

Quellenstraße 110, A-1100 Wien

T. +43(0)1 489 3961-0

F. +43(0)1 489 3961-7

[mail@szabo-scandic.com](mailto:mail@szabo-scandic.com)

[www.szabo-scandic.com](http://www.szabo-scandic.com)

[linkedin.com/company/szaboscandic](https://www.linkedin.com/company/szaboscandic) 



# TBCB MaxPab mouse polyclonal antibody (B01) MaxPab®

Catalog # : H00001155-B01

規格 : [ 50 uL ]

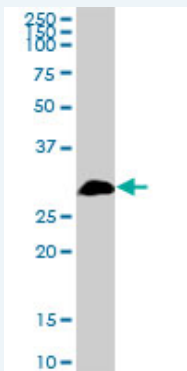
[List All](#)

## Specification

<b>Product Description:</b>	Mouse polyclonal antibody raised against a full-length human TBCB protein.
<b>Immunogen:</b>	TBCB (AAH05969, 1 a.a. ~ 244 a.a) full-length human protein.
<b>Sequence:</b>	MEVTGVSAPTVTVFISSSLNTRSEKRYSRSLTIAEFKCKLELLVGSPASC MELELYGVDDKFYSKLDQEDALLGSYPVDDGCRIHVIDHSGARLGEYED VSRVEKYTISQEAYDQRQDTVRSFLKRSKLGRYNEEERAQQEAEAAQR LAEEKAQASSIPVGSRCVRAAGQSPRRGTVMYVGLTDFKPGYWIGVR YDEPLGKNDGSVNGKRYFECQAKYGAFVKPAVVTVGDFPEEDYGLDEI
<b>Host:</b>	Mouse
<b>Reactivity:</b>	Human
<b>Quality Control Testing:</b>	Antibody reactive against mammalian transfected lysate.
<b>Storage Buffer:</b>	No additive
<b>Storage Instruction:</b>	Store at -20°C or lower. Aliquot to avoid repeated freezing and thawing.
<b>Note:</b>	For IHC and IF applications, antibody purification with Protein A will be needed prior to use.
<b>MSDS:</b>	 <a href="#">Download</a>
<b>Datasheet:</b>	 <a href="#">Download</a>

## Applications

### Western Blot (Cell lysate)



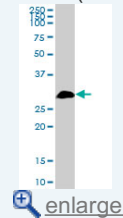
TBCB MaxPab polyclonal antibody. Western Blot analysis of TBCB expression in HeLa.

 [Protocol Download](#)

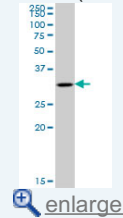
### Western Blot (Cell lysate)

## Application Image

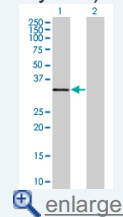
### Western Blot (Cell lysate)

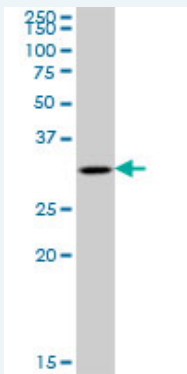


### Western Blot (Cell lysate)



### Western Blot (Transfected lysate)

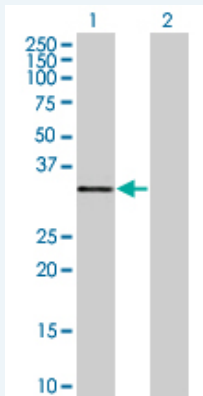




TBCB MaxPab polyclonal antibody. Western Blot analysis of TBCB expression in K-562.

 [Protocol Download](#)

#### Western Blot (Transfected lysate)



Western Blot analysis of TBCB expression in transfected 293T cell line ([H00001155-T01](#)) by TBCB MaxPab polyclonal antibody.

Lane 1: CKAP1 transfected lysate(26.84 KDa).

Lane 2: Non-transfected lysate.

 [Protocol Download](#)

#### Gene Information

Entrez GeneID: [1155](#)

GeneBank [BC005969](#)

Accession#:

Protein [AAH05969](#)

Accession#:

Gene Name: TBCB

Gene Alias: CG22,CKAP1,CKAPI,MGC14625

Gene tubulin folding cofactor B

Description:

Omim ID: [601303](#)

Gene Ontology: [Hyperlink](#)

Other cytoskeleton associated protein 1,cytoskeleton-associated protein 1

Designations:

#### Related Disease

[Cardiovascular Diseases](#) [Diabetes Mellitus, Type 2](#) [Edema](#)

