



SZABO SCANDIC

Part of Europa Biosite

Produktinformation



Forschungsprodukte & Biochemikalien



Zellkultur & Verbrauchsmaterial



Diagnostik & molekulare Diagnostik



Laborgeräte & Service

Weitere Information auf den folgenden Seiten!
See the following pages for more information!



Lieferung & Zahlungsart

siehe unsere [Liefer- und Versandbedingungen](#)

Zuschläge

- Mindermengenzuschlag
- Trockeneiszuschlag
- Gefahrgutzuschlag
- Expressversand

SZABO-SCANDIC HandelsgmbH

Quellenstraße 110, A-1100 Wien

T. +43(0)1 489 3961-0

F. +43(0)1 489 3961-7

mail@szabo-scandic.com

www.szabo-scandic.com

[linkedin.com/company/szaboscandic](https://www.linkedin.com/company/szaboscandic) 

TBCB MaxPab mouse polyclonal antibody (B02) MaxPab®

Catalog # : H00001155-B02

規格 : [50 uL]

[List All](#)

Specification

Product Description: Mouse polyclonal antibody raised against a full-length human TBCB protein.

Immunogen: TBCB (NP_001272.2, 1 a.a. ~ 244 a.a) full-length human protein.

Sequence:
 MEVTGVSAPTVTVFISSSLNTRSEKRYSRSLTIAEFKCKLELLVGSPASC
 MELELYGVDDKFYSKLDQEDALLGSYPVDDGCRIHVIDHSGARLGEYED
 VSRVEKYTISQEAYDQRQDTRVRSFLKRSKLGRYNEEERAQQEAEAAQR
 LAEEKAQASSIPVGSRCVRAAGQSPRRGTVMYVGLTDFKPGYWIGVR
 YDEPLGKNDGSVNGKRYFECQAKYGAFVKPAVVTVGDFPEEDYGLDEI

Host: Mouse

Reactivity: Human

Quality Control Testing: Antibody reactive against mammalian transfected lysate.

Storage Buffer: No additive

Storage Instruction: Store at -20°C or lower. Aliquot to avoid repeated freezing and thawing.

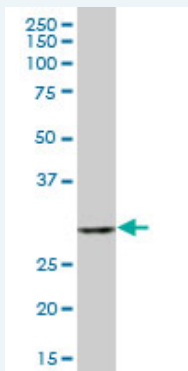
Note: For IHC and IF applications, antibody purification with Protein A will be needed prior to use.

MSDS:  [Download](#)

Datasheet:  [Download](#)

Applications

Western Blot (Tissue lysate)



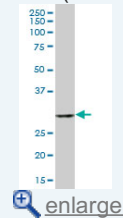
CKAP1 MaxPab polyclonal antibody. Western Blot analysis of CKAP1 expression in human spleen.


 [Protocol Download](#)

Western Blot (Transfected lysate)

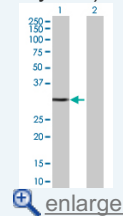
Application Image

Western Blot (Tissue lysate)

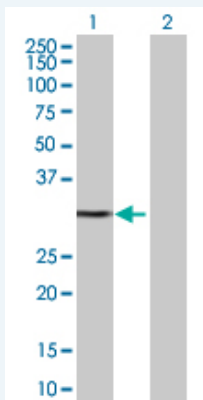


 [enlarge](#)

Western Blot (Transfected lysate)




 [enlarge](#)



Western Blot analysis of TBCB expression in transfected 293T cell line ([H00001155-T02](#)) by TBCB MaxPab polyclonal antibody.

Lane 1: CKAP1 transfected lysate(26.84 KDa).
Lane 2: Non-transfected lysate.

 [Protocol Download](#)

Gene Information

Entrez GeneID: [1155](#)

GeneBank Accession#: [NM_001281.2](#)

Protein Accession#: [NP_001272.2](#)

Gene Name: TBCB

Gene Alias: CG22,CKAP1,CKAPI,MGC14625

Gene Description: tubulin folding cofactor B

Omim ID: [601303](#)

Gene Ontology: [Hyperlink](#)

Other Designations: cytoskeleton associated protein 1, cytoskeleton-associated protein 1

Related Disease

[Cardiovascular Diseases](#) [Diabetes Mellitus, Type 2](#) [Edema](#)