



# SZABO SCANDIC

Part of Europa Biosite

## Produktinformation



Forschungsprodukte & Biochemikalien



Zellkultur & Verbrauchsmaterial



Diagnostik & molekulare Diagnostik



Laborgeräte & Service

Weitere Information auf den folgenden Seiten!  
See the following pages for more information!



### Lieferung & Zahlungsart

siehe unsere [Liefer- und Versandbedingungen](#)

### Zuschläge

- Mindermengenzuschlag
- Trockeneiszuschlag
- Gefahrgutzuschlag
- Expressversand

### SZABO-SCANDIC HandelsgmbH

Quellenstraße 110, A-1100 Wien

T. +43(0)1 489 3961-0

F. +43(0)1 489 3961-7

[mail@szabo-scandic.com](mailto:mail@szabo-scandic.com)

[www.szabo-scandic.com](http://www.szabo-scandic.com)

[linkedin.com/company/szaboscandic](https://www.linkedin.com/company/szaboscandic) 

## CKM polyclonal antibody (A01)

Catalog # : H00001158-A01

規格 : [ 50 uL ]

List All

### Specification

**Product Description:** Mouse polyclonal antibody raised against a partial recombinant CKM.

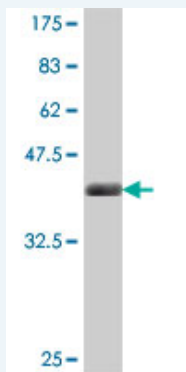
**Immunogen:** CKM (NP\_001815, 282 a.a. ~ 381 a.a) partial recombinant protein with GST tag.

**Sequence:** TCPSNLGTGLRGGVHVKLAHLSKHPKFEEILTRLRLQKRGTGGVDTAAGSVFDVSNADRLGSSEVEQQLVWDGVKLMVEMEKKLEKGSIDDMIPAKQ

**Host:** Mouse

**Reactivity:** Human

**Quality Control Testing:** Antibody Reactive Against Recombinant Protein.



Western Blot detection against Immunogen (37.11 kDa) .

**Storage Buffer:** 50 % glycerol

**Storage Instruction:** Store at -20°C or lower. Aliquot to avoid repeated freezing and thawing.

**MSDS:** [Download](#)

**Datasheet:** [Download](#)

### Applications

**Western Blot (Recombinant protein)**

[Protocol Download](#)

**ELISA**

### Gene Information

**Entrez GeneID:** [1158](#)

**GeneBank Accession#:** [NM\\_001824](#)

**Protein Accession#:** [NP\\_001815](#)

**Gene Name:** CKM

**Gene Alias:** CKMM,M-CK

**Gene Description:** creatine kinase, muscle

**Omim ID:** [123310](#)

**Gene Ontology:** [Hyperlink](#)

**Gene Summary:** The protein encoded by this gene is a cytoplasmic enzyme involved in energy homeostasis and is an important serum marker for myocardial infarction. The encoded protein reversibly catalyzes the transfer of phosphate between ATP and various phosphogens such as creatine phosphate. It acts as a homodimer in striated muscle as well as in other tissues, and as a heterodimer with a similar brain isozyme in heart. The encoded protein is a member of the ATP:guanido phosphotransferase protein family. [provided by RefSeq]

**Other Designations:** creatine kinase M chain,creatine kinase-M,muscle creatine kinase

#### Gene Pathway

[Arginine and proline metabolism](#) [Metabolic pathways](#)

#### Related Disease

[Body Weight](#) [Cardiovascular Diseases](#) [Cleft Lip](#) [Cleft Palate](#) [Coronary Artery Disease](#)  
[Diabetes Mellitus, Type 2](#) [Edema](#) [Genetic Predisposition to Disease](#)  
[Task Performance and Analysis](#)

[服務條款](#) | [隱私權政策](#) | [著作及商標](#) | [網站地圖](#)

©2016 亞諾法生技股份有限公司 Abnova Corporation. 版權所有.