



SZABO SCANDIC

Part of Europa Biosite

Produktinformation



Forschungsprodukte & Biochemikalien



Zellkultur & Verbrauchsmaterial



Diagnostik & molekulare Diagnostik



Laborgeräte & Service

Weitere Information auf den folgenden Seiten!
See the following pages for more information!



Lieferung & Zahlungsart

siehe unsere [Liefer- und Versandbedingungen](#)

Zuschläge

- Mindermengenzuschlag
- Trockeneiszuschlag
- Gefahrgutzuschlag
- Expressversand

SZABO-SCANDIC HandelsgmbH

Quellenstraße 110, A-1100 Wien

T. +43(0)1 489 3961-0

F. +43(0)1 489 3961-7

mail@szabo-scandic.com

www.szabo-scandic.com

[linkedin.com/company/szaboscandic](https://www.linkedin.com/company/szaboscandic) 

CKM purified MaxPab rabbit polyclonal antibody (D01P) MaxPab®

Catalog # : H00001158-D01P

規格 : [100 ug]

[List All](#)

Specification

Product Description: Rabbit polyclonal antibody raised against a full-length human CKM protein.

Immunogen: CKM (AAH07462.1, 1 a.a. ~ 381 a.a) full-length human protein.

Sequence:
 MPFGNTHNKFKLNYKPEEEYPDLKHNHMAKVL TLELYKKLRDKETPS
 GFTVDDVIQT GVDNPGHPFIMTVGCVAGDEESYEVFKELFDPIISDRHGG
 YKPTDKHKTDLNHENLKGDDLDPNYVLSRVRTGRSIIKGYTLPPHCSR
 GERRAVEKLSVEALNSLTGEFKGKYPLKSMTKEKEQQQLIDHFLFDKP
 VSPLLLASGMARDWPDARGIMHNDNKSLLVVWNEEDHLRVISMEKGGN
 MKEVFRRFCVGLQKIEEIFKKAGHPFMWNQHLGYVLTCPNLTGLRG
 GVHVKLAHLSKHPKFEEILTRLRLQKRGTGGVDTAAVGSVFDVSNADRL
 GSSEVEQVQLVVDGVKLMVEMEKKLEKQSIDDMIPAQK

Host: Rabbit

Reactivity: Human

Quality Control Testing: Antibody reactive against mammalian transfected lysate.

Storage Buffer: In 1x PBS, pH 7.4

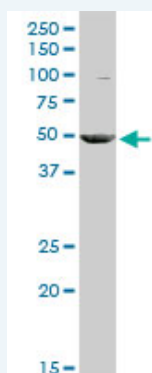
Storage Instruction: Store at -20°C or lower. Aliquot to avoid repeated freezing and thawing.

MSDS: [Download](#)

Datasheet: [Download](#)

Applications

Western Blot (Cell lysate)



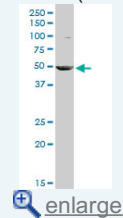
CKM MaxPab rabbit polyclonal antibody. Western Blot analysis of CKM expression in HepG2.

[Protocol Download](#)

Western Blot (Transfected lysate)

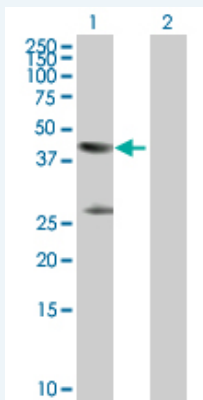
Application Image

Western Blot (Cell lysate)



Western Blot (Transfected lysate)





Western Blot analysis of CKM expression in transfected 293T cell line ([H00001158-T01](#)) by CKM MaxPab polyclonal antibody.

Lane 1: CKM transfected lysate(43.10 kDa).
Lane 2: Non-transfected lysate.

 [Protocol Download](#)

Gene Information

Entrez GeneID: [1158](#)

GeneBank Accession#: [BC007462](#)

Protein Accession#: [AAH07462.1](#)

Gene Name: CKM

Gene Alias: CKMM,M-CK

Gene Description: creatine kinase, muscle

Omim ID: [123310](#)

Gene Ontology: [Hyperlink](#)

Gene Summary: The protein encoded by this gene is a cytoplasmic enzyme involved in energy homeostasis and is an important serum marker for myocardial infarction. The encoded protein reversibly catalyzes the transfer of phosphate between ATP and various phosphogens such as creatine phosphate. It acts as a homodimer in striated muscle as well as in other tissues, and as a heterodimer with a similar brain isozyme in heart. The encoded protein is a member of the ATP:guanido phosphotransferase protein family. [provided by RefSeq]

Other Designations: creatine kinase M chain,creatine kinase-M,muscle creatine kinase

Gene Pathway

[Arginine and proline metabolism](#) [Metabolic pathways](#)

Related Disease

[Body Weight](#) [Cardiovascular Diseases](#) [Cleft Lip](#) [Cleft Palate](#) [Coronary Artery Disease](#) [Diabetes Mellitus, Type 2](#) [Edema](#) [Genetic Predisposition to Disease](#) [Task Performance and Analysis](#)

