



# SZABO SCANDIC

Part of Europa Biosite

## Produktinformation



Forschungsprodukte & Biochemikalien



Zellkultur & Verbrauchsmaterial



Diagnostik & molekulare Diagnostik



Laborgeräte & Service

Weitere Information auf den folgenden Seiten!  
See the following pages for more information!



### Lieferung & Zahlungsart

siehe unsere [Liefer- und Versandbedingungen](#)

### Zuschläge

- Mindermengenzuschlag
- Trockeneiszuschlag
- Gefahrgutzuschlag
- Expressversand

### SZABO-SCANDIC HandelsgmbH

Quellenstraße 110, A-1100 Wien

T. +43(0)1 489 3961-0

F. +43(0)1 489 3961-7

[mail@szabo-scandic.com](mailto:mail@szabo-scandic.com)

[www.szabo-scandic.com](http://www.szabo-scandic.com)

[linkedin.com/company/szaboscandic](https://www.linkedin.com/company/szaboscandic) 

## CKM monoclonal antibody (M02), clone 1E3

Catalog # : H00001158-M02

規格 : [ 100 ug ]

[List All](#)

### Specification

**Product Description:** Mouse monoclonal antibody raised against a partial recombinant CKM.

**Immunogen:** CKM (NP\_001815, 282 a.a. ~ 381 a.a) partial recombinant protein with GST tag. MW of the GST tag alone is 26 KDa.

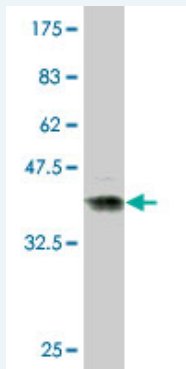
**Sequence:** TCPSNLGTGLRGGVHVKLAHLKHPKFEELTRLRLQKRGTGGVDTAAV  
GSVFDVSNADRLGSSEVEQVQLVWDGVKLMVEMEKKLEKGSIDDMIPA  
QK

**Host:** Mouse

**Reactivity:** Human

**Isotype:** IgG1 Kappa

**Quality Control Testing:** Antibody Reactive Against Recombinant Protein.



Western Blot detection against Immunogen (36.74 KDa) .

**Storage Buffer:** In 1x PBS, pH 7.4

**Storage Instruction:** Store at -20°C or lower. Aliquot to avoid repeated freezing and thawing.

**MSDS:** [Download](#)

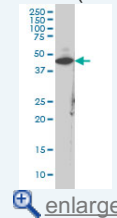
**Datasheet:** [Download](#)

### Applications

Western Blot (Cell lysate)

### Application Image

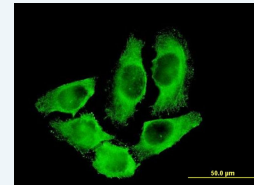
Western Blot (Cell lysate)



[enlarge](#)

Western Blot (Recombinant protein)

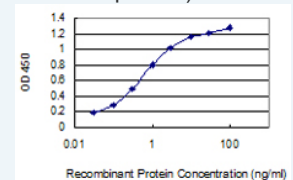
Immunofluorescence



[enlarge](#)

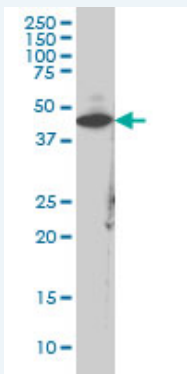
Sandwich ELISA (Recombinant protein)

Sandwich ELISA (Recombinant protein)



[enlarge](#)

ELISA



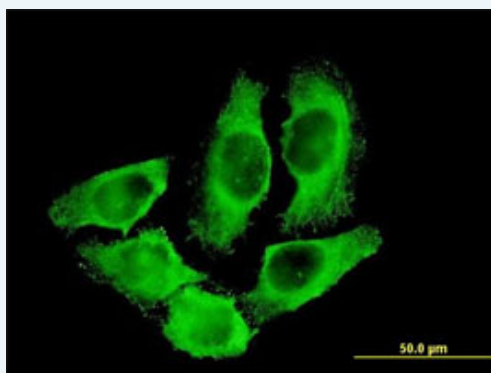
CKM monoclonal antibody (M02), clone 1E3 Western Blot analysis of CKM expression in IMR-32 ( Cat # L008V1 ).

[Protocol Download](#)

#### Western Blot (Recombinant protein)

[Protocol Download](#)

#### Immunofluorescence



[enlarge this image](#)

Immunofluorescence of monoclonal antibody to CKM on HeLa cell . [antibody concentration 10 ug/ml]

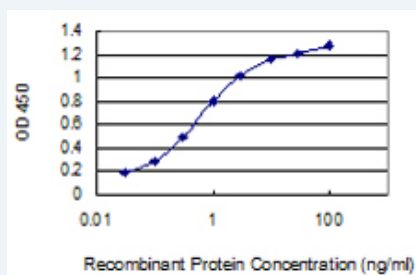
[Protocol Download](#)

#### Sandwich ELISA (Recombinant protein)

Detection limit for recombinant GST tagged CKM is approximately 30ng/ml as a capture antibody.

[Protocol Download](#)

#### Sandwich ELISA (Recombinant protein)



Detection limit for recombinant GST tagged CKM is 0.03 ng/ml as a capture antibody.

[Protocol Download](#)

#### ELISA

#### Gene Information

Entrez GeneID: [1158](#)

GeneBank [NM\\_001824](#)

Accession#:

Protein [NP\\_001815](#)

Accession#:

**Gene Name:** CKM

**Gene Alias:** CKMM,M-CK

**Gene Description:** creatine kinase, muscle

**Omim ID:** [123310](#)

**Gene Ontology:** [Hyperlink](#)

**Gene Summary:** The protein encoded by this gene is a cytoplasmic enzyme involved in energy homeostasis and is an important serum marker for myocardial infarction. The encoded protein reversibly catalyzes the transfer of phosphate between ATP and various phosphogens such as creatine phosphate. It acts as a homodimer in striated muscle as well as in other tissues, and as a heterodimer with a similar brain isozyme in heart. The encoded protein is a member of the ATP:guanido phosphotransferase protein family. [provided by RefSeq]

**Other Designations:** creatine kinase M chain,creatine kinase-M,muscle creatine kinase

### Gene Pathway

[Arginine and proline metabolism](#) [Metabolic pathways](#)

### Related Disease

[Body Weight](#) [Cardiovascular Diseases](#) [Cleft Lip](#) [Cleft Palate](#) [Coronary Artery Disease](#)  
[Diabetes Mellitus, Type 2](#) [Edema](#) [Genetic Predisposition to Disease](#)  
[Task Performance and Analysis](#)

[服務條款](#) | [隱私權政策](#) | [著作及商標](#) | [網站地圖](#)

©2016 亞諾法生技股份有限公司 Abnova Corporation. 版權所有.