



SZABO SCANDIC

Part of Europa Biosite

Produktinformation



Forschungsprodukte & Biochemikalien



Zellkultur & Verbrauchsmaterial



Diagnostik & molekulare Diagnostik



Laborgeräte & Service

Weitere Information auf den folgenden Seiten!
See the following pages for more information!



Lieferung & Zahlungsart

siehe unsere [Liefer- und Versandbedingungen](#)

Zuschläge

- Mindermengenzuschlag
- Trockeneiszuschlag
- Gefahrgutzuschlag
- Expressversand

SZABO-SCANDIC HandelsgmbH

Quellenstraße 110, A-1100 Wien

T. +43(0)1 489 3961-0

F. +43(0)1 489 3961-7

mail@szabo-scandic.com

www.szabo-scandic.com

[linkedin.com/company/szaboscandic](https://www.linkedin.com/company/szaboscandic) 

CKM 293T Cell Transient Overexpression Lysate(Denatured)

Catalog # : H00001158-T01

規格 : [100 uL]

[List All](#)

Specification

Transfected Cell Line: 293T

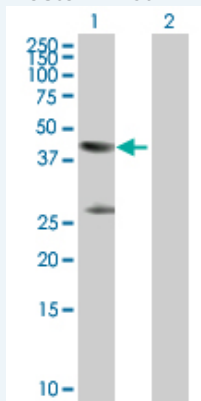
Plasmid: pCMV-CKM full-length

Host: Human

Theoretical MW (kDa): 43.1

Quality Control Testing: Transient overexpression cell lysate was tested with Anti-CKM antibody (H00001158-D01P) by Western Blots.

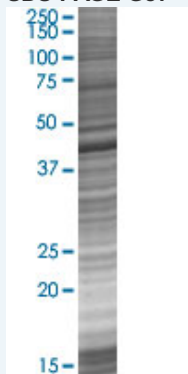
Western Blot



Lane 1: CKM transfected lysate (43.10 KDa)

Lane 2: Non-transfected lysate.

SDS-PAGE Gel



CKM transfected lysate.

Storage Buffer: 1X Sample Buffer (50 mM Tris-HCl, 2% SDS, 10% glycerol, 300 mM 2-mercaptoethanol, 0.01% Bromophenol blue)

Storage Instruction: Store at -80°C. Aliquot to avoid repeated freezing and thawing.

MSDS:  [Download](#)

Applications

Application Image

Western Blot

Western Blot

Gene Information

Entrez GeneID: [1158](#)

GeneBank [BC007462](#)
Accession#:

Protein [AAH07462.1](#)
Accession#:

Gene Name: CKM

Gene Alias: CKMM,M-CK

Gene Description: creatine kinase, muscle

Omim ID: [123310](#)

Gene Ontology: [Hyperlink](#)

Gene Summary: The protein encoded by this gene is a cytoplasmic enzyme involved in energy homeostasis and is an important serum marker for myocardial infarction. The encoded protein reversibly catalyzes the transfer of phosphate between ATP and various phosphogens such as creatine phosphate. It acts as a homodimer in striated muscle as well as in other tissues, and as a heterodimer with a similar brain isozyme in heart. The encoded protein is a member of the ATP:guanido phosphotransferase protein family. [provided by RefSeq]

Other Designations: creatine kinase M chain,creatine kinase-M,muscle creatine kinase

Gene Pathway

[Arginine and proline metabolism](#) [Metabolic pathways](#)

Related Disease

[Body Weight](#) [Cardiovascular Diseases](#) [Cleft Lip](#) [Cleft Palate](#) [Coronary Artery Disease](#)
[Diabetes Mellitus, Type 2](#) [Edema](#) [Genetic Predisposition to Disease](#)
[Task Performance and Analysis](#)

[服務條款](#) | [隱私權政策](#) | [著作及商標](#) | [網站地圖](#)

©2016 亞諾法生技股份有限公司 Abnova Corporation. 版權所有.