



SZABO SCANDIC

Part of Europa Biosite

Produktinformation



Forschungsprodukte & Biochemikalien



Zellkultur & Verbrauchsmaterial



Diagnostik & molekulare Diagnostik



Laborgeräte & Service

Weitere Information auf den folgenden Seiten!
See the following pages for more information!



Lieferung & Zahlungsart

siehe unsere [Liefer- und Versandbedingungen](#)

Zuschläge

- Mindermengenzuschlag
- Trockeneiszuschlag
- Gefahrgutzuschlag
- Expressversand

SZABO-SCANDIC HandelsgmbH

Quellenstraße 110, A-1100 Wien

T. +43(0)1 489 3961-0

F. +43(0)1 489 3961-7

mail@szabo-scandic.com

www.szabo-scandic.com

[linkedin.com/company/szaboscandic](https://www.linkedin.com/company/szaboscandic) 

CKMT1B polyclonal antibody (A01)

Catalog # : H00001159-A01

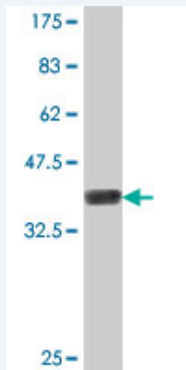
規格 : [50 uL]

[List All](#)

Specification

| | |
|-----------------------------|---|
| Product Description: | Mouse polyclonal antibody raised against a partial recombinant CKMT1B. |
| Immunogen: | CKMT1B (NP_066270, 327 a.a. ~ 417 a.a) partial recombinant protein with GST tag. |
| Sequence: | GVHIKLPLLSKDSRFPKILENLRQLQKRGTTGGVDTAATGGVFDISNLDRLGKSEVELVQLVIDGVNYLIDCERRLERGQDIRIPTPVIHTKH |
| Host: | Mouse |
| Reactivity: | Human |

Quality Control Testing: Antibody Reactive Against Recombinant Protein.



Western Blot detection against Immunogen (36.12 KDa) .

Storage Buffer: 50 % glycerol

Storage Instruction: Store at -20°C or lower. Aliquot to avoid repeated freezing and thawing.

MSDS: [Download](#)

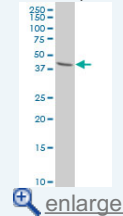
Datasheet: [Download](#)

Applications

Western Blot (Cell lysate)

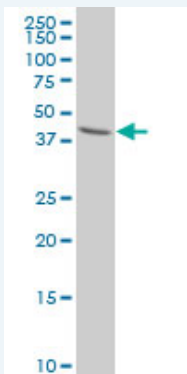
Application Image

Western Blot (Cell lysate)



Western Blot (Recombinant protein)


ELISA



CKMT1B polyclonal antibody (A01), Lot # 060613JCS1 Western Blot analysis of CKMT1B expression in 293 (Cat # L026V1).

 [Protocol Download](#)

Western Blot (Recombinant protein)

 [Protocol Download](#)

ELISA

Gene Information

Entrez GeneID: [1159](#)

GeneBank [NM_020990](#)

Accession#:

Protein [NP_066270](#)

Accession#:

Gene Name: CKMT1B

Gene Alias: CKMT,CKMT1,UMTCK

Gene creatine kinase, mitochondrial 1B

Description:

Omim ID: [123290](#)

Gene Ontology: [Hyperlink](#)

Gene Summary: Mitochondrial creatine (MtCK) kinase is responsible for the transfer of high energy phosphate from mitochondria to the cytosolic carrier, creatine. It belongs to the creatine kinase isoenzyme family. It exists as two isoenzymes, sarcomeric MtCK and ubiquitous MtCK, encoded by separate genes. Mitochondrial creatine kinase occurs in two different oligomeric forms: dimers and octamers, in contrast to the exclusively dimeric cytosolic creatine kinase isoenzymes. Many malignant cancers with poor prognosis have shown overexpression of ubiquitous mitochondrial creatine kinase; this may be related to high energy turnover and failure to eliminate cancer cells via apoptosis. Ubiquitous mitochondrial creatine kinase has 80% homology with the coding exons of sarcomeric mitochondrial creatine kinase. Two genes located near each other on chromosome 15 have been identified which encode identical mitochondrial creatine kinase proteins. [provided by RefSeq]

Other OTTHUMP00000066275,acidic-type mitochondrial creatine
Designations: kinase,creatine kinase, mitochondrial 1 (ubiquitous),ubiquitous mitochondrial creatine kinase

Gene Pathway

[Arginine and proline metabolism](#) [Metabolic pathways](#)

