



SZABO SCANDIC

Part of Europa Biosite

Produktinformation



Forschungsprodukte & Biochemikalien



Zellkultur & Verbrauchsmaterial



Diagnostik & molekulare Diagnostik



Laborgeräte & Service

Weitere Information auf den folgenden Seiten!
See the following pages for more information!



Lieferung & Zahlungsart

siehe unsere [Liefer- und Versandbedingungen](#)

Zuschläge

- Mindermengenzuschlag
- Trockeneiszuschlag
- Gefahrgutzuschlag
- Expressversand

SZABO-SCANDIC HandelsgmbH

Quellenstraße 110, A-1100 Wien

T. +43(0)1 489 3961-0

F. +43(0)1 489 3961-7

mail@szabo-scandic.com

www.szabo-scandic.com

[linkedin.com/company/szaboscandic](https://www.linkedin.com/company/szaboscandic) 

CKMT1B MaxPab mouse polyclonal antibody (B01) MaxPab®

Catalog # : H00001159-B01

規格 : [50 uL]

[List All](#)

Specification

Product Description: Mouse polyclonal antibody raised against a full-length human CKMT1B protein.

Immunogen: CKMT1B (NP_066270, 1 a.a. ~ 417 a.a) full-length human protein.

Sequence:
 MAGPFSRLLSARPLRLLALAGAGSLAAGFLLRPEPVRAASERRRLYPP
 SAEYPLDRKHNNCMASHLTPAVYARLCKDTTPTGWTLDQCIQTGVDNP
 GHPIKTVGMVAGDEETYEVFADLFDPIQERHNGYDPRTMKHTTDLDA
 SKIRSGYFDERYVLSSRVRTGRSIRGLSLPPACTRAERREVERVVDALS
 GLKGDLAGRYRLSEMTEAEQQQLIDHFLFDKPVSPLLTAAGMARDW
 PDARGIWHNNEKSFLIMVNEEDHTRVISMEEKGGNMKRVERFCRGLKEV
 ERLIQERGWEFMWNERLGYILTCSNLGTGLRAGVHIKPLLSKDSRFPK
 ILENLRLQKRGTTGGVDTAATGGVFDISNLDRLGKSEVELVQLVIDGVNYLI
 DCERRLERGQDIRIPTVHTKH

Host: Mouse

Reactivity: Human

Quality Control Testing: Antibody reactive against mammalian transfected lysate.

Storage Buffer: No additive

Storage Instruction: Store at -20°C or lower. Aliquot to avoid repeated freezing and thawing.

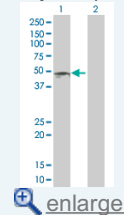
Note: For IHC and IF applications, antibody purification with Protein A will be needed prior to use.


MSDS:  [Download](#)

Datasheet:  [Download](#)

Application Image

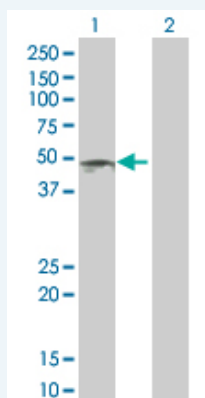
Western Blot (Transfected lysate)



 [enlarge](#)

Applications

Western Blot (Transfected lysate)



Western Blot analysis of CKMT1B expression in transfected 293T cell line (H00001159-T01) by CKMT1B MaxPab polyclonal antibody.

Lane 1: CKMT1B transfected lysate(45.87 KDa).
Lane 2: Non-transfected lysate.

 [Protocol Download](#)

Gene Information

Entrez GeneID: [1159](#)

**GeneBank
Accession#:** [NM_020990](#)

**Protein
Accession#:** [NP_066270](#)

Gene Name: CKMT1B

Gene Alias: CKMT,CKMT1,UMTCK

**Gene
Description:** creatine kinase, mitochondrial 1B

Omim ID: [123290](#)

Gene Ontology: [Hyperlink](#)

Gene Summary: Mitochondrial creatine (MtCK) kinase is responsible for the transfer of high energy phosphate from mitochondria to the cytosolic carrier, creatine. It belongs to the creatine kinase isoenzyme family. It exists as two isoenzymes, sarcomeric MtCK and ubiquitous MtCK, encoded by separate genes. Mitochondrial creatine kinase occurs in two different oligomeric forms: dimers and octamers, in contrast to the exclusively dimeric cytosolic creatine kinase isoenzymes. Many malignant cancers with poor prognosis have shown overexpression of ubiquitous mitochondrial creatine kinase; this may be related to high energy turnover and failure to eliminate cancer cells via apoptosis. Ubiquitous mitochondrial creatine kinase has 80% homology with the coding exons of sarcomeric mitochondrial creatine kinase. Two genes located near each other on chromosome 15 have been identified which encode identical mitochondrial creatine kinase proteins. [provided by RefSeq]

**Other
Designations:** OTTHUMP00000066275,acidic-type mitochondrial creatine kinase,creatine kinase, mitochondrial 1 (ubiquitous),ubiquitous mitochondrial creatine kinase

Gene Pathway

[Arginine and proline metabolism](#) [Metabolic pathways](#)

[服務條款](#) | [隱私權政策](#) | [著作及商標](#) | [網站地圖](#)

©2016 亞諾法生技股份有限公司 Abnova Corporation. 版權所有.