



SZABO SCANDIC

Part of Europa Biosite

Produktinformation



Forschungsprodukte & Biochemikalien



Zellkultur & Verbrauchsmaterial



Diagnostik & molekulare Diagnostik



Laborgeräte & Service

Weitere Information auf den folgenden Seiten!
See the following pages for more information!



Lieferung & Zahlungsart

siehe unsere [Liefer- und Versandbedingungen](#)

Zuschläge

- Mindermengenzuschlag
- Trockeneiszuschlag
- Gefahrgutzuschlag
- Expressversand

SZABO-SCANDIC HandelsgmbH

Quellenstraße 110, A-1100 Wien

T. +43(0)1 489 3961-0

F. +43(0)1 489 3961-7

mail@szabo-scandic.com

www.szabo-scandic.com

[linkedin.com/company/szaboscandic](https://www.linkedin.com/company/szaboscandic)

CKMT1B monoclonal antibody (M04), clone 2C8

Catalog # : H00001159-M04

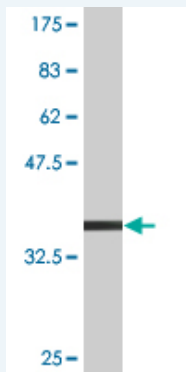
規格 : [100 ug]

[List All](#)

Specification

Product Description:	Mouse monoclonal antibody raised against a partial recombinant CKMT1B.
Immunogen:	CKMT1B (NP_066270, 327 a.a. ~ 417 a.a) partial recombinant protein with GST tag. MW of the GST tag alone is 26 KDa.
Sequence:	GVHIKLPLLSKDSRFPKILENLRQLQKRGTTGGVDTAATGGVFDISNLDRLGKSEVELVQLVIDGVNYLIDCERRLERGQDIRIPTPVIHTKH
Host:	Mouse
Reactivity:	Human
Isotype:	IgG2a Kappa

Quality Control Testing: Antibody Reactive Against Recombinant Protein.



Western Blot detection against Immunogen (35.75 KDa) .

Storage Buffer: In 1x PBS, pH 7.4

Storage Instruction: Store at -20°C or lower. Aliquot to avoid repeated freezing and thawing.

MSDS: [Download](#)

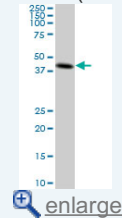
Datasheet: [Download](#)

Applications

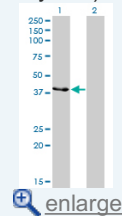
Western Blot (Cell lysate)

Application Image

Western Blot (Cell lysate)

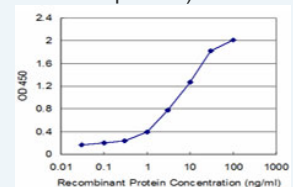


Western Blot (Transfected lysate)



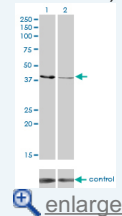
Western Blot (Recombinant protein)

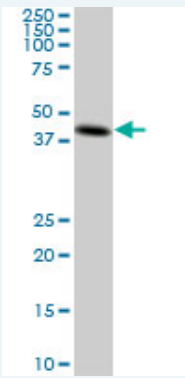
Sandwich ELISA (Recombinant protein)



ELISA

RNAi Knockdown (Antibody validated)

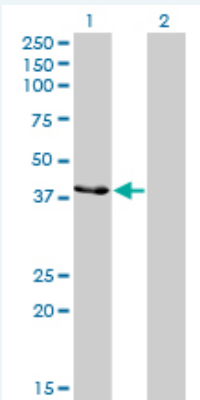




CKMT1B monoclonal antibody (M04), clone 2C8. Western Blot analysis of CKMT1B expression in A-431 (Cat # L015V1).

[Protocol Download](#)

Western Blot (Transfected lysate)



Western Blot analysis of CKMT1B expression in transfected 293T cell line by CKMT1B monoclonal antibody (M04), clone 2C8.

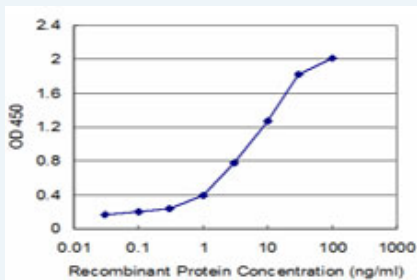
Lane 1: CKMT1B transfected lysate(47 kDa).
Lane 2: Non-transfected lysate.

[Protocol Download](#)

Western Blot (Recombinant protein)

[Protocol Download](#)

Sandwich ELISA (Recombinant protein)

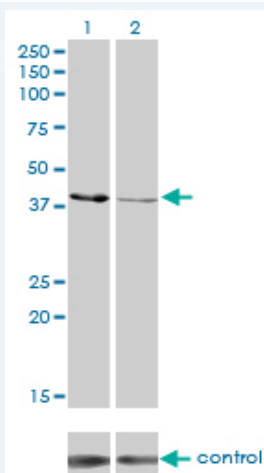


Detection limit for recombinant GST tagged CKMT1B is approximately 0.1ng/ml as a capture antibody.

[Protocol Download](#)

ELISA

RNAi Knockdown (Antibody validated)



Western blot analysis of CKMT1B over-expressed 293 cell line, cotransfected with CKMT1B Validated Chimera RNAi (Cat # H00001159-R01V) (Lane 2) or non-transfected control (Lane 1). Blot probed with CKMT1B monoclonal antibody (M04), clone 2C8 (Cat # H00001159-M04). GAPDH (36.1 kDa) used as specificity and loading control.

 [Protocol Download](#)

Gene Information

Entrez GeneID: [1159](#)

GeneBank [NM_020990](#)

Accession#:

Protein [NP_066270](#)

Accession#:

Gene Name: CKMT1B

Gene Alias: CKMT,CKMT1,UMTCK

Gene creatine kinase, mitochondrial 1B

Description:

Omim ID: [123290](#)

Gene Ontology: [Hyperlink](#)

Gene Summary: Mitochondrial creatine (MtCK) kinase is responsible for the transfer of high energy phosphate from mitochondria to the cytosolic carrier, creatine. It belongs to the creatine kinase isoenzyme family. It exists as two isoenzymes, sarcomeric MtCK and ubiquitous MtCK, encoded by separate genes. Mitochondrial creatine kinase occurs in two different oligomeric forms: dimers and octamers, in contrast to the exclusively dimeric cytosolic creatine kinase isoenzymes. Many malignant cancers with poor prognosis have shown overexpression of ubiquitous mitochondrial creatine kinase; this may be related to high energy turnover and failure to eliminate cancer cells via apoptosis. Ubiquitous mitochondrial creatine kinase has 80% homology with the coding exons of sarcomeric mitochondrial creatine kinase. Two genes located near each other on chromosome 15 have been identified which encode identical mitochondrial creatine kinase proteins. [provided by RefSeq

Other Designations: OTTHUMP00000066275,acidic-type mitochondrial creatine kinase,creatine kinase, mitochondrial 1 (ubiquitous),ubiquitous mitochondrial creatine kinase

Gene Pathway

[Arginine and proline metabolism](#) [Metabolic pathways](#)

