



SZABO SCANDIC

Part of Europa Biosite

Produktinformation



Forschungsprodukte & Biochemikalien



Zellkultur & Verbrauchsmaterial



Diagnostik & molekulare Diagnostik



Laborgeräte & Service

Weitere Information auf den folgenden Seiten!
See the following pages for more information!



Lieferung & Zahlungsart

siehe unsere [Liefer- und Versandbedingungen](#)

Zuschläge

- Mindermengenzuschlag
- Trockeneiszuschlag
- Gefahrgutzuschlag
- Expressversand

SZABO-SCANDIC HandelsgmbH

Quellenstraße 110, A-1100 Wien

T. +43(0)1 489 3961-0

F. +43(0)1 489 3961-7

mail@szabo-scandic.com

www.szabo-scandic.com

[linkedin.com/company/szaboscandic](https://www.linkedin.com/company/szaboscandic) 

CKMT2 purified MaxPab mouse polyclonal antibody (B01P) MaxPab®

Catalog # : H00001160-B01P

規格 : [50 ug]

[List All](#)

Specification

Product Description: Mouse polyclonal antibody raised against a full-length human CKMT2 protein.

Immunogen: CKMT2 (AAH29140.1, 1 a.a. ~ 419 a.a) full-length human protein.

Sequence:
 MASIFSKLLTGRNASLLFATMGTSVLTTGYLLNRQKVCAEVREQPRLFP
 PSADYPLDRKHNNCMAECLTPAIYAKLRNKVTPNGYTLDQCIQTGVDNP
 GHPFIKTVGMVAGDEESYEVFADLFDPVIKLRHNGYDPRVMKHTTDLDA
 SKITQQGFDEHYVLSRVRTGRSIRGLSLPPACTRAERREVENVAITALE
 GLKGDLAGRYKLSMTEQDQQRLLDDHFLFDKPVSPLLTCAGMARDW
 PDARGIWHNYDKTFLIWINEEDHTRVISMEEKGGNMKRVFERFCRGLKEVE
 RLIQERGWEFMWNERLGYILTCPSNLGTGLRAGVHVRIPKLSKDPFRFSKI
 LENLRLQKRGTGGVDTAAVADVVDISNIDRIGRSEVELVQIVDGVNYLVD
 CEKKLERGQDIKVPPLPQFGKK

Host: Mouse

Reactivity: Human

Quality Control Testing: Antibody reactive against mammalian transfected lysate.

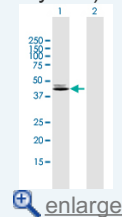
Storage Buffer: In 1x PBS, pH 7.4


Storage Instruction: Store at -20°C or lower. Aliquot to avoid repeated freezing and thawing.

Datasheet:  [Download](#)

Application Image

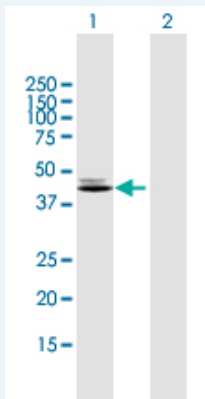
Western Blot (Transfected lysate)



 [enlarge](#)

Applications


Western Blot (Transfected lysate)



Western Blot analysis of CKMT2 expression in transfected 293T cell line (H00001160-T01) by CKMT2 MaxPab polyclonal antibody.

Lane 1: CKMT2 transfected lysate(46.09 kDa).

Lane 2: Non-transfected lysate.

 [Protocol Download](#)

Gene Information

Entrez GeneID: [1160](#)

**GeneBank
Accession#:** [BC029140.1](#)

**Protein
Accession#:** [AAH29140.1](#)

Gene Name: CKMT2

Gene Alias: SMTCK

**Gene
Description:** creatine kinase, mitochondrial 2 (sarcomeric)

Omim ID: [123295](#)

Gene Ontology: [Hyperlink](#)

Gene Summary: Mitochondrial creatine kinase (MtCK) is responsible for the transfer of high energy phosphate from mitochondria to the cytosolic carrier, creatine. It belongs to the creatine kinase isoenzyme family. It exists as two isoenzymes, sarcomeric MtCK and ubiquitous MtCK, encoded by separate genes. Mitochondrial creatine kinase occurs in two different oligomeric forms: dimers and octamers, in contrast to the exclusively dimeric cytosolic creatine kinase isoenzymes. Sarcomeric mitochondrial creatine kinase has 80% homology with the coding exons of ubiquitous mitochondrial creatine kinase. This gene contains sequences homologous to several motifs that are shared among some nuclear genes encoding mitochondrial proteins and thus may be essential for the coordinated activation of these genes during mitochondrial biogenesis. Three transcript variants encoding the same protein have been found for this gene. [provided by RefSeq]

**Other
Designations:** OTTHUMP00000147542,basic-type mitochondrial creatine kinase,sarcomeric mitochondrial creatine kinase

Gene Pathway

[Arginine and proline metabolism](#) [Metabolic pathways](#)