



# SZABO SCANDIC

Part of Europa Biosite

## Produktinformation



Forschungsprodukte & Biochemikalien



Zellkultur & Verbrauchsmaterial



Diagnostik & molekulare Diagnostik



Laborgeräte & Service

Weitere Information auf den folgenden Seiten!  
See the following pages for more information!



### Lieferung & Zahlungsart

siehe unsere [Liefer- und Versandbedingungen](#)

### Zuschläge

- Mindermengenzuschlag
- Trockeneiszuschlag
- Gefahrgutzuschlag
- Expressversand

### SZABO-SCANDIC HandelsgmbH

Quellenstraße 110, A-1100 Wien

T. +43(0)1 489 3961-0

F. +43(0)1 489 3961-7

[mail@szabo-scandic.com](mailto:mail@szabo-scandic.com)

[www.szabo-scandic.com](http://www.szabo-scandic.com)

[linkedin.com/company/szaboscandic](https://www.linkedin.com/company/szaboscandic) 

## CKMT2 purified MaxPab rabbit polyclonal antibody (D01P) MaxPab®

Catalog # : H00001160-D01P

規格 : [ 100 ug ]

[List All](#)

### Specification

**Product Description:** Rabbit polyclonal antibody raised against a full-length human CKMT2 protein.

**Immunogen:** CKMT2 (AAH29140.1, 1 a.a. ~ 419 a.a) full-length human protein.

**Sequence:**  
 MASIFSKLLTGRNASLLFATMGTSVLTTGYLLNRQKVCAEVREQPRLFP  
 PSADYPLDRKHNNCMAECLTPAIYAKLRNKVTPNGYTL DQCIQTGVDNP  
 GHPFIKTVGMVAGDEESYEVFADLFDPVIKLRHNGYDPRVMKHTTDLDA  
 SKITQQGFDEHYVLSRVRTGRSIRGLSLPPACTRAERREVENVAITALE  
 GLKGDLAGRYYKLSMTEQDQQRLLDDHFLFDKPVSPLLTCAGMARDW  
 PDARGIWHNYDKTFLIWINEEDHTRVISMKEGGNMKRVFERFCRGLKEVE  
 RLIQERGWEFMWNERLGYILTCPSNLGTGLRAGVHVRIPKLSKDPFRFSKI  
 LENLRLQKRGTGGVDTAAVADVVDISNIDRIGRSEVELVQIVDGVNYLVD  
 CEKKLERGQDIKVPPLPQFGKK

**Host:** Rabbit

**Reactivity:** Human

**Quality Control Testing:** Antibody reactive against mammalian transfected lysate.

**Storage Buffer:** In 1x PBS, pH 7.4

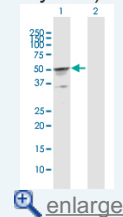
**Storage Instruction:** Store at -20°C or lower. Aliquot to avoid repeated freezing and thawing.

**MSDS:** [Download](#)

**Datasheet:** [Download](#)

### Application Image

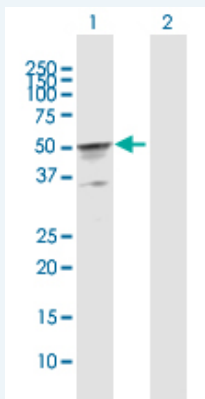
Western Blot (Transfected lysate)



[enlarge](#)

### Applications

Western Blot (Transfected lysate)



Western Blot analysis of CKMT2 expression in transfected 293T cell line (H00001160-T01) by CKMT2 MaxPab polyclonal antibody.

Lane 1: CKMT2 transfected lysate(47.50 KDa).

Lane 2: Non-transfected lysate.

## Gene Information

**Entrez GeneID:** [1160](#)

**GeneBank Accession#:** [BC029140.1](#)

**Protein Accession#:** [AAH29140.1](#)

**Gene Name:** CKMT2

**Gene Alias:** SMTCK

**Gene Description:** creatine kinase, mitochondrial 2 (sarcomeric)

**Omim ID:** [123295](#)

**Gene Ontology:** [Hyperlink](#)

**Gene Summary:** Mitochondrial creatine kinase (MtCK) is responsible for the transfer of high energy phosphate from mitochondria to the cytosolic carrier, creatine. It belongs to the creatine kinase isoenzyme family. It exists as two isoenzymes, sarcomeric MtCK and ubiquitous MtCK, encoded by separate genes. Mitochondrial creatine kinase occurs in two different oligomeric forms: dimers and octamers, in contrast to the exclusively dimeric cytosolic creatine kinase isoenzymes. Sarcomeric mitochondrial creatine kinase has 80% homology with the coding exons of ubiquitous mitochondrial creatine kinase. This gene contains sequences homologous to several motifs that are shared among some nuclear genes encoding mitochondrial proteins and thus may be essential for the coordinated activation of these genes during mitochondrial biogenesis. Three transcript variants encoding the same protein have been found for this gene. [provided by RefSeq]

**Other Designations:** OTTHUMP00000147542,basic-type mitochondrial creatine kinase,sarcomeric mitochondrial creatine kinase

## Gene Pathway

[Arginine and proline metabolism](#) [Metabolic pathways](#)