



SZABO SCANDIC

Part of Europa Biosite

Produktinformation



Forschungsprodukte & Biochemikalien



Zellkultur & Verbrauchsmaterial



Diagnostik & molekulare Diagnostik



Laborgeräte & Service

Weitere Information auf den folgenden Seiten!
See the following pages for more information!



Lieferung & Zahlungsart

siehe unsere [Liefer- und Versandbedingungen](#)

Zuschläge

- Mindermengenzuschlag
- Trockeneiszuschlag
- Gefahrgutzuschlag
- Expressversand

SZABO-SCANDIC HandelsgmbH

Quellenstraße 110, A-1100 Wien

T. +43(0)1 489 3961-0

F. +43(0)1 489 3961-7

mail@szabo-scandic.com

www.szabo-scandic.com

[linkedin.com/company/szaboscandic](https://www.linkedin.com/company/szaboscandic) 

CSE1L monoclonal antibody (M08), clone 3D8

Catalog # : H00001434-M08

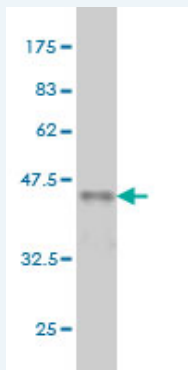
規格 : [100 ug]

[List All](#)

Specification

Product Description:	Mouse monoclonal antibody raised against a partial recombinant CSE1L.
Immunogen:	CSE1L (NP_001307, 872 a.a. ~ 971 a.a) partial recombinant protein with GST tag. MW of the GST tag alone is 26 KDa.
Sequence:	LIGLFELPEDDTIPDEEHFIDIEDTPGYQTAFSQLAFAGKKEHDPVGMVN NPKIHLAQLSHKLSLSTACPGRVPSMVSTSLNAEALQYLQGYLQAARVTL
Host:	Mouse
Reactivity:	Human
Isotype:	IgG1 Kappa

Quality Control Testing: Antibody Reactive Against Recombinant Protein.



Western Blot detection against Immunogen (36.74 KDa) .

Storage Buffer: In 1x PBS, pH 7.4

Storage Instruction: Store at -20°C or lower. Aliquot to avoid repeated freezing and thawing.

MSDS: [Download](#)

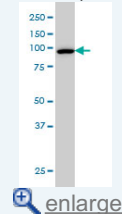
Datasheet: [Download](#)

Publication Reference

- [CSE1L Links cAMP/PKA and Ras/ERK pathways and regulates the expressions and phosphorylations of ERK1/2, CREB, and MITF in melanoma cells.](#)
Lee WR, Shen SC, Wu PR, Chou CL, Shih YH, Yeh CM, Yeh KT, Jang MC. Mol Carcinog. 2015 Sep 1. [Epub ahead of print]
- [hCAS/CSE1L regulates RAD51 distribution and focus formation for homologous recombinational repair.](#)
Okimoto S, Sun J, Fukuto A, Horikoshi Y, Matsuda S, Matsuda T, Ikura M, Ikura T, Machida S, Kurumizaka H, Miyamoto Y, Oka M, Yoneda Y, Kiuchi Y, Tashiro S. Genes Cells. 2015 Jun 30. [Epub ahead of print]
- [Early decline in serum phospho-CSE1L levels in vemurafenib/sunitinib-treated](#)

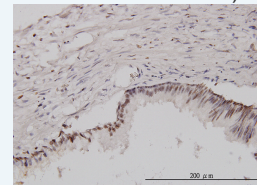
Application Image

Western Blot (Cell lysate)

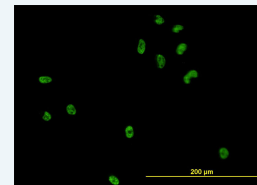


Western Blot (Recombinant protein)

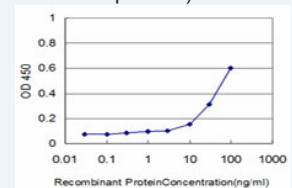
Immunohistochemistry (Formalin/PFA-fixed paraffin-embedded sections)



Immunofluorescence



Sandwich ELISA (Recombinant protein)



ELISA

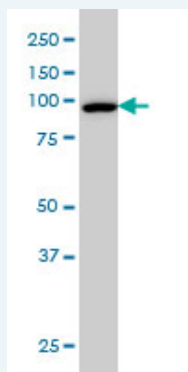
melanoma and sorafenib/lapatinib-treated colorectal tumor xenografts.

Lee WR, Shen SC, Shih YH5, Chou CL, Tseng JT, Chin SY, Liu KH, Chen YC, Jiang MC. *J Transl Med.* 2015 Jun 13;13:191.

4. High expression of cytoplasmic phosphorylated CSE1L in malignant melanoma but not in benign nevi: phosphorylated CSE1L for the discrimination between melanoma and benign nevi.
Chin SY, Wu PR, Shih YH, Yeh CM, Lee WR, Shen SC, Yeh KT, Jiang MC, Tseng JT. *Int J Clin Exp Pathol* 2015;8(2):1393-1401
5. CSE1L modulates Ras-induced cancer cell invasion: correlation of K-Ras mutation and CSE1L expression in colorectal cancer progression.
Jiang MC, Yeh CM, Tai CJ, Chen HC, Lin SH, Su TC, Shen SC, Lee WR, Liao CF, Li LT, Lee CH, Chen YC, Yeh KT, Chang CCAm *J Surg.* 2013 Jun 24. pii: S0002-9610(13)00247-X. doi: 10.1016/j.amjsurg.2012.11.021.
6. MIR-137 Suppresses Growth and Invasion, is Downregulated in Oligodendroglial Tumors and Targets CSE1L.
Li KK, Yang L, Pang JC, Chan AK, Zhou L, Mao Y, Wang Y, Lau KM, Poon WS, Shi Z, Ng HK. *Brain Pathol.* 2012 Dec 17. doi: 10.1111/bpa.12015.
7. The prognostic significance of nuclear CSE1L in urinary bladder urothelial carcinomas.
Chang CC, Tai CJ, Su TC, Shen KH, Lin SH, Yeh CM, Yeh KT, Lin YM, Jiang MC. *Ann Diagn Pathol.* 2012 Apr 2. [Epub ahead of print]
8. Differential distributions of CSE1L/CAS and E-cadherin in the polarized and non-polarized epithelial glands of neoplastic colorectal epithelium.
Uen WC, Tai CJ, Shen SC, Lee WR, Tsao TY, Deng WP, Chiou HY, Hsu CH, Hsieh CI, Liao CF, Jiang MC. *J Mol Histol.* 2010 Aug 24. [Epub ahead of print]
9. Serum Cellular Apoptosis Susceptibility Protein Is a Potential Prognostic Marker for Metastatic Colorectal Cancer.
Stella Tsai CS, Chen HC, Tung JN, Tsou SS, Tsao TY, Liao CF, Chen YC, Yeh CY, Yeh KT, Jiang MC. *Am J Pathol.* 2010 Apr;176(4):1619-28. Epub 2010 Feb 11.
10. Higher Prevalence of Secretory CSE1L/CAS in Sera of Patients with Metastatic Cancer.
Tung MC, Tsai CS, Tung JN, Tsao TY, Chen HC, Yeh KT, Liao CF, Jiang MC. *Cancer Epidemiol Biomarkers Prev.* 2009 May;18(5):1570-7. Epub 2009 Apr 21.
11. Function of CSE1L/CAS in the secretion of HT-29 human colorectal cells and its expression in human colon.
Tsao TY, Tsai CS, Tung JN, Chen SL, Yue CH, Liao CF, Wang CC, Jiang MC. *Mol Cell Biochem.* 2009 Jul;327(1-2):163-70. Epub 2009 Feb 18.

Applications

Western Blot (Cell lysate)



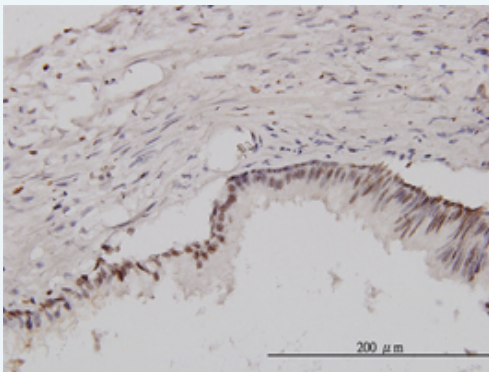
CSE1L monoclonal antibody (M08), clone 3D8 Western Blot analysis of CSE1L expression in HeLa S3 NE (Cat # L013V3).

 [Protocol Download](#)

Western Blot (Recombinant protein)

 [Protocol Download](#)

Immunohistochemistry (Formalin/PFA-fixed paraffin-embedded sections)

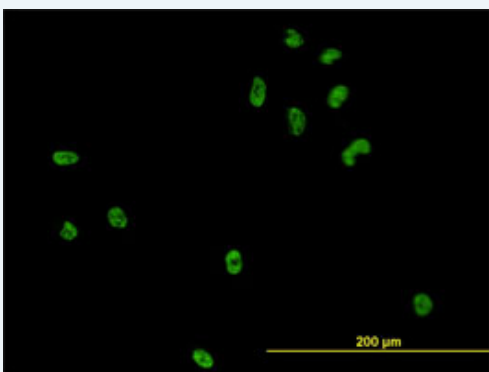


[enlarge this image](#)

Immunoperoxidase of monoclonal antibody to CSE1L on formalin-fixed paraffin-embedded human prostate. [antibody concentration 3 ug/ml]

[Protocol Download](#)

Immunofluorescence

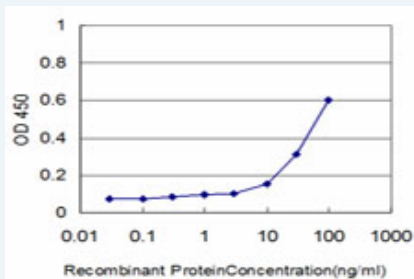


[enlarge this image](#)

Immunofluorescence of monoclonal antibody to CSE1L on HeLa cell. [antibody concentration 10 ug/ml]

[Protocol Download](#)

Sandwich ELISA (Recombinant protein)



Detection limit for recombinant GST tagged CSE1L is approximately 3ng/ml as a capture antibody.

[Protocol Download](#)

ELISA

Gene Information

Entrez GeneID: [1434](#)

GeneBank Accession#: [NM_001316](#)

Protein Accession#: [NP_001307](#)

Gene Name: CSE1L

Gene Alias: CAS,CSE1,MGC117283,MGC130036,MGC130037,XPO2

Gene Description: CSE1 chromosome segregation 1-like (yeast)

Omim ID: [601342](#)

Gene Ontology: [Hyperlink](#)

Gene Summary: Proteins that carry a nuclear localization signal (NLS) are transported into the nucleus by the importin-alpha/beta heterodimer. Importin-alpha binds the NLS, while importin-beta mediates translocation through the nuclear pore complex. After translocation, RanGTP binds importin-beta and displaces importin-alpha. Importin-alpha must then be returned to the cytoplasm, leaving the NLS protein behind. The protein encoded by this gene binds strongly to NLS-free importin-alpha, and this binding is released in the cytoplasm by the combined action of RANBP1 and RANGAP1. In addition, the encoded protein may play a role both in apoptosis and in cell proliferation. [provided by RefSeq]

Other Designations: CSE1 chromosome segregation 1-like protein, OTTHUMP00000043373, cellular apoptosis susceptibility protein, chromosome segregation 1-like, importin-alpha re-exporter

[服務條款](#) | [隱私權政策](#) | [著作及商標](#) | [網站地圖](#)

©2016 亞諾法生技股份有限公司 Abnova Corporation. 版權所有.