



# SZABO SCANDIC

Part of Europa Biosite

## Produktinformation



Forschungsprodukte & Biochemikalien



Zellkultur & Verbrauchsmaterial



Diagnostik & molekulare Diagnostik



Laborgeräte & Service

Weitere Information auf den folgenden Seiten!  
See the following pages for more information!



### Lieferung & Zahlungsart

siehe unsere [Liefer- und Versandbedingungen](#)

### Zuschläge

- Mindermengenzuschlag
- Trockeneiszuschlag
- Gefahrgutzuschlag
- Expressversand

### SZABO-SCANDIC HandelsgmbH

Quellenstraße 110, A-1100 Wien

T. +43(0)1 489 3961-0

F. +43(0)1 489 3961-7

[mail@szabo-scandic.com](mailto:mail@szabo-scandic.com)

[www.szabo-scandic.com](http://www.szabo-scandic.com)

[linkedin.com/company/szaboscandic](https://www.linkedin.com/company/szaboscandic) 

## CSF1 polyclonal antibody (A01)

Catalog # : H00001435-A01

規格 : [ 50 uL ]

List All

### Specification

**Product Description:** Mouse polyclonal antibody raised against a partial recombinant CSF1.

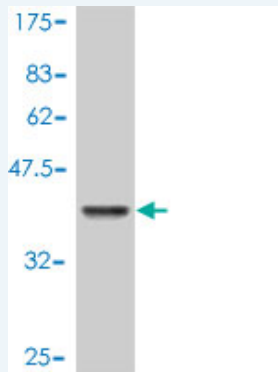
**Immunogen:** CSF1 (AAH21117, 33 a.a. ~ 132 a.a) partial recombinant protein with GST tag.

**Sequence:** EEVSEYCSHMIGSGHLQSLQRLIDSQMETSCQITFEFVDQEQLKDPVCY LKKAFLLVQDIMEDTMRFRDNTPNIAIVQLQELSLRLKSCFTKDYEEHDK

**Host:** Mouse

**Reactivity:** Human

**Quality Control Testing:** Antibody Reactive Against Recombinant Protein.



Western Blot detection against Immunogen (37 KDa) .

**Storage Buffer:** 50 % glycerol

**Storage Instruction:** Store at -20°C or lower. Aliquot to avoid repeated freezing and thawing.

**MSDS:**  [Download](#)

**Datasheet:**  [Download](#)

### Applications

**Western Blot (Recombinant protein)**

 [Protocol Download](#)

**ELISA**

### Gene Information

**Entrez GeneID:** [1435](#)

**GeneBank Accession#:** [BC021117](#)

### Application Image

Western Blot (Recombinant protein)

ELISA

**Protein** [AAH21117](#)

**Accession#:**

**Gene Name:** CSF1

**Gene Alias:** MCSF,MGC31930

**Gene** colony stimulating factor 1 (macrophage)

**Description:**

**Omim ID:** [120420](#)

**Gene Ontology:** [Hyperlink](#)

**Gene Summary:** The protein encoded by this gene is a cytokine that controls the production, differentiation, and function of macrophages. The active form of the protein is found extracellularly as a disulfide-linked homodimer, and is thought to be produced by proteolytic cleavage of membrane-bound precursors. The encoded protein may be involved in development of the placenta. Four transcript variants encoding three different isoforms have been found for this gene. [provided by RefSeq]

**Other Designations:** OTTHUMP00000013362,OTTHUMP00000013363,OTTHUMP00000013364,colony stimulating factor 1,macrophage colony stimulating factor

#### Gene Pathway

[Cytokine-cytokine receptor interaction](#) [Hematopoietic cell lineage](#)

#### Related Disease

[Alzheimer Disease](#) [Alzheimer disease](#) [Cardiovascular Diseases](#) [Chorioamnionitis](#)  
[Coronary Artery Disease](#) [Diabetes Mellitus, Type 2](#) [Edema](#)  
[Fetal Membranes, Premature Rupture](#) [Genetic Predisposition to Disease](#) [Inflammation](#)  
[Kidney Failure, Chronic](#) [Neoplasms](#) [Obstetric Labor, Premature](#) [Osteitis Deformans](#)  
[Ovarian Neoplasms](#) [Periodontitis](#) [Pre-Eclampsia](#) [Premature Birth](#)

[服務條款](#) | [隱私權政策](#) | [著作及商標](#) | [網站地圖](#)

©2016 亞諾法生技股份有限公司 Abnova Corporation. 版權所有.