



# SZABO SCANDIC

Part of Europa Biosite

## Produktinformation



Forschungsprodukte & Biochemikalien



Zellkultur & Verbrauchsmaterial



Diagnostik & molekulare Diagnostik



Laborgeräte & Service

Weitere Information auf den folgenden Seiten!  
See the following pages for more information!



### Lieferung & Zahlungsart

siehe unsere [Liefer- und Versandbedingungen](#)

### Zuschläge

- Mindermengenzuschlag
- Trockeneiszuschlag
- Gefahrgutzuschlag
- Expressversand

### SZABO-SCANDIC HandelsgmbH

Quellenstraße 110, A-1100 Wien

T. +43(0)1 489 3961-0

F. +43(0)1 489 3961-7

[mail@szabo-scandic.com](mailto:mail@szabo-scandic.com)

[www.szabo-scandic.com](http://www.szabo-scandic.com)

[linkedin.com/company/szaboscandic](https://www.linkedin.com/company/szaboscandic) 

## CSF1 (Human) Matched Antibody Pair

Catalog # : H00001435-AP21

規格 : [ 1 Set ]

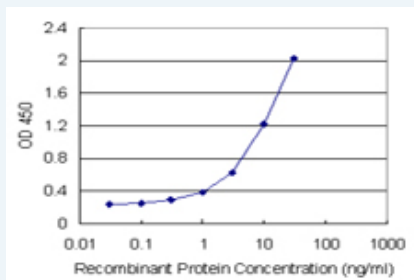
[List All](#)

### Specification

**Product Description:** This antibody pair set comes with matched antibody pair to detect and quantify protein level of human CSF1.

**Reactivity:** Human

**Quality Control Testing:** Standard curve using recombinant protein ( H00001435-P01 ) as an analyte.



Sandwich ELISA detection sensitivity ranging from 0.03 ng/ml to 100 ng/ml.


**Supplied Product:** Antibody pair set content:  
 1. Capture antibody: rabbit MaxPab® affinity purified polyclonal anti-CSF1 (100 ug)  
 2. Detection antibody: mouse polyclonal anti-CSF1 (40 ul)  
 \*Reagents are sufficient for at least 3-5 x 96 well plates using recommended protocols.

**Storage Instruction:** Store reagents of the antibody pair set at -20°C or lower. Please aliquot to avoid repeated freeze thaw cycle. Reagents should be returned to -20°C storage immediately after use.

**MSDS:**  [Download](#)

### Applications

ELISA Pair (Recombinant protein)

 [Protocol Download](#)

### Gene Information

**Entrez GeneID:** [1435](#)

**Gene Name:** CSF1

**Gene Alias:** MCSF, MGC31930

**Gene Description:** colony stimulating factor 1 (macrophage)

**Omim ID:** [120420](#)

**Gene Ontology:** [Hyperlink](#)

**Gene Summary:** The protein encoded by this gene is a cytokine that controls the production, differentiation, and function of macrophages. The active form of the protein is found extracellularly as a disulfide-linked homodimer, and is thought to be produced by proteolytic cleavage of membrane-bound precursors. The encoded protein may be involved in development of the placenta. Four transcript variants encoding three different isoforms have been found for this gene. [provided by RefSeq]

**Other** OTTHUMP00000013362,OTTHUMP00000013363,OTTHUMP00000013364,  
**Designations:** colony stimulating factor 1,macrophage colony stimulating factor

### Gene Pathway

[Cytokine-cytokine receptor interaction](#) [Hematopoietic cell lineage](#)

### Related Disease

[Alzheimer Disease](#) [Alzheimer disease](#) [Cardiovascular Diseases](#) [Chorioamnionitis](#)  
[Coronary Artery Disease](#) [Diabetes Mellitus, Type 2](#) [Edema](#)  
[Fetal Membranes, Premature Rupture](#) [Genetic Predisposition to Disease](#) [Inflammation](#)  
[Kidney Failure, Chronic](#) [Neoplasms](#) [Obstetric Labor, Premature](#) [Osteitis Deformans](#)  
[Ovarian Neoplasms](#) [Periodontitis](#) [Pre-Eclampsia](#) [Premature Birth](#)

[服務條款](#) | [隱私權政策](#) | [著作及商標](#) | [網站地圖](#)

©2016 亞諾法生技股份有限公司 Abnova Corporation. 版權所有.