



SZABO SCANDIC

Part of Europa Biosite

Produktinformation



Forschungsprodukte & Biochemikalien



Zellkultur & Verbrauchsmaterial



Diagnostik & molekulare Diagnostik



Laborgeräte & Service

Weitere Information auf den folgenden Seiten!
See the following pages for more information!



Lieferung & Zahlungsart

siehe unsere [Liefer- und Versandbedingungen](#)

Zuschläge

- Mindermengenzuschlag
- Trockeneiszuschlag
- Gefahrgutzuschlag
- Expressversand

SZABO-SCANDIC HandelsgmbH

Quellenstraße 110, A-1100 Wien

T. +43(0)1 489 3961-0

F. +43(0)1 489 3961-7

mail@szabo-scandic.com

www.szabo-scandic.com

[linkedin.com/company/szaboscandic](https://www.linkedin.com/company/szaboscandic) 

CSF1 MaxPab mouse polyclonal antibody (B01) MaxPab®

Catalog # : H00001435-B01

規格 : [50 uL]

[List All](#)

Specification

Product Description: Mouse polyclonal antibody raised against a full-length human CSF1 protein.

Immunogen: CSF1 (NP_000748, 1 a.a. ~ 554 a.a) full-length human protein.

Sequence:
 MTAPGAAGRCPPTTWLGSLLLLVCLLASRSITEEVSEYCSHMIGSGHLQ
 SLQRLIDSQMETSCQITFEFVDQEQLKDPVCYLKAFLLVQDIMEDTMRF
 RDNTPNAIAIVQLQELSLRLKSCFTKDYEEHDKACVRTFYETPLQLLEKVK
 NVFNETKNLLDKDWNIFSKNCNNSFAECSSQDVVTKPDCNCLYPKAIPSS
 DPASVSPHQPLAPSMAPVAGLTWEDSEGTEGSSLLPGEQPLHTVDPGS
 AKQRPPRSTCQSFEPPEPVPVKDSTIGGSPQPRPSVGFNPGMEDILDS
 AMGTNWWPEEASGEASEIPVPGTELSPSRPGGSMQTEPARPSNFLS
 ASSPLPASAKGQQPADVTGTALPRVGPVRPTGQDWNHTPQKTDHPSAL
 LRDPPEPGSPRISSLRPQGLSNPSTLSAQPLSRSHSSGSVLPLEGELEG
 RRSTRDRRSPAEEGGPASEGAARPLPRFNSVPLTDTGHERQSEGSSS
 PQLQESVFHLLVPSVILVLLAVGGLLFYRWRRRRSHQEPQRADSPLEQPE
 GSPLTQDDRQVELPV

Host: Mouse

Reactivity: Human

Quality Control Testing: Antibody reactive against mammalian transfected lysate.

Storage Buffer: No additive

Storage Instruction: Store at -20°C or lower. Aliquot to avoid repeated freezing and thawing.

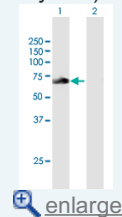
Note: For IHC and IF applications, antibody purification with Protein A will be needed prior to use.


MSDS:  [Download](#)

Datasheet:  [Download](#)

Application Image

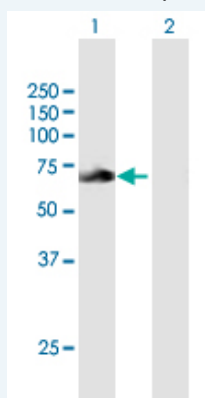
Western Blot (Transfected lysate)



 [enlarge](#)

Applications

Western Blot (Transfected lysate)



Western Blot analysis of CSF1 expression in transfected 293T cell line ([H00001435-T01](#)) by CSF1 MaxPab polyclonal antibody.

Lane 1: CSF1 transfected lysate(60.94 KDa).

Lane 2: Non-transfected lysate.

 [Protocol Download](#)

Gene Information

Entrez GeneID: [1435](#)

**GeneBank
Accession#:** [NM_000757](#)

**Protein
Accession#:** [NP_000748](#)

Gene Name: CSF1

Gene Alias: MCSF,MGC31930

**Gene
Description:** colony stimulating factor 1 (macrophage)

Omim ID: [120420](#)

Gene Ontology: [Hyperlink](#)

Gene Summary: The protein encoded by this gene is a cytokine that controls the production, differentiation, and function of macrophages. The active form of the protein is found extracellularly as a disulfide-linked homodimer, and is thought to be produced by proteolytic cleavage of membrane-bound precursors. The encoded protein may be involved in development of the placenta. Four transcript variants encoding three different isoforms have been found for this gene. [provided by RefSeq]

**Other
Designations:** OTTHUMP00000013362,OTTHUMP00000013363,OTTHUMP00000013364,colony stimulating factor 1,macrophage colony stimulating factor

Gene Pathway

[Cytokine-cytokine receptor interaction](#) [Hematopoietic cell lineage](#)

Related Disease

[Alzheimer Disease](#) [Alzheimer disease](#) [Cardiovascular Diseases](#) [Chorioamnionitis](#)
[Coronary Artery Disease](#) [Diabetes Mellitus, Type 2](#) [Edema](#)
[Fetal Membranes, Premature Rupture](#) [Genetic Predisposition to Disease](#) [Inflammation](#)
[Kidney Failure, Chronic](#) [Neoplasms](#) [Obstetric Labor, Premature](#) [Osteitis Deformans](#)
[Ovarian Neoplasms](#) [Periodontitis](#) [Pre-Eclampsia](#) [Premature Birth](#)

[服務條款](#) | [隱私權政策](#) | [著作及商標](#) | [網站地圖](#)

©2016 亞諾法生技股份有限公司 Abnova Corporation. 版權所有.