



SZABO SCANDIC

Part of Europa Biosite

Produktinformation



Forschungsprodukte & Biochemikalien



Zellkultur & Verbrauchsmaterial



Diagnostik & molekulare Diagnostik



Laborgeräte & Service

Weitere Information auf den folgenden Seiten!
See the following pages for more information!



Lieferung & Zahlungsart

siehe unsere [Liefer- und Versandbedingungen](#)

Zuschläge

- Mindermengenzuschlag
- Trockeneiszuschlag
- Gefahrgutzuschlag
- Expressversand

SZABO-SCANDIC HandelsgmbH

Quellenstraße 110, A-1100 Wien

T. +43(0)1 489 3961-0

F. +43(0)1 489 3961-7

mail@szabo-scandic.com

www.szabo-scandic.com

[linkedin.com/company/szaboscandic](https://www.linkedin.com/company/szaboscandic) 

CSF1 monoclonal antibody (M01), clone 1A9

Catalog # : H00001435-M01

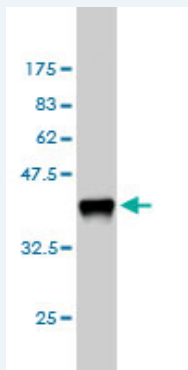
規格 : [100 ug]

[List All](#)

Specification

| | |
|-----------------------------|---|
| Product Description: | Mouse monoclonal antibody raised against a partial recombinant CSF1. |
| Immunogen: | CSF1 (AAH21117, 33 a.a. ~ 132 a.a) partial recombinant protein with GST tag. MW of the GST tag alone is 26 KDa. |
| Sequence: | EEVSEYCSHMIGSGHLQSLQRLIDSQMETSCQITFEFVDQEQLKDPVCY LKKAFLLVQDIMEDTMRFRDNTPNIAIVQLQELSLRLKSCFTKDYEEHDK |
| Host: | Mouse |
| Reactivity: | Human |
| Isotype: | IgG1 Kappa |

Quality Control Testing: Antibody Reactive Against Recombinant Protein.



Western Blot detection against Immunogen (36.63 KDa) .

Storage Buffer: In 1x PBS, pH 7.4

Storage Instruction: Store at -20°C or lower. Aliquot to avoid repeated freezing and thawing.

MSDS: [Download](#)

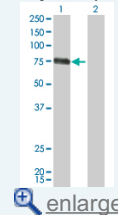
Datasheet: [Download](#)

Publication Reference

1. [miR148b is a major coordinator of breast cancer progression in a relapse-associated microRNA signature by targeting ITGA5, ROCK1, PIK3CA, NRAS, and CSF1.](#)
Cimino D, De Pitta C, Orso F, Zampini M, Casara S, Penna E, Quagliano E, Forni M, Damasco C, Pinatel E, Ponzzone R, Romualdi C, Brisken C, De Bortoli M, Biglia N, Provero P, Lanfranchi G, Taverna DFASEB J. 2013 Mar;27(3):1223-35. doi: 10.1096/fj.12-214692. Epub 2012 Dec 11.
2. [Pathway-Based Biomarker Search by High-Throughput Proteomics Profiling of Secretomes.](#)
Lawlor K, Nazarian A, Lacomis L, Tempst P, Villanueva J.J Proteome Res. 2009 Mar;8(3):1489-503.

Application Image

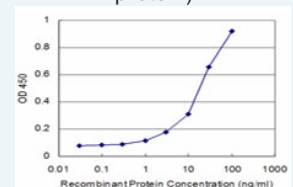
Western Blot (Transfected lysate)



[enlarge](#)

Western Blot (Recombinant protein)

Sandwich ELISA (Recombinant protein)

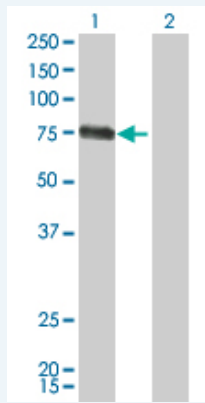


[enlarge](#)

ELISA

Applications

Western Blot (Transfected lysate)



Western Blot analysis of CSF1 expression in transfected 293T cell line by CSF1 monoclonal antibody (M01), clone 1A9.

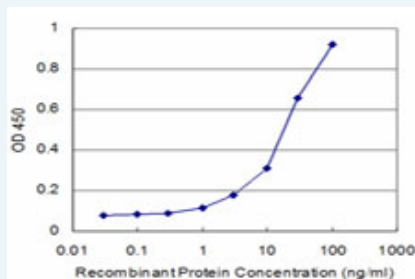
Lane 1: CSF1 transfected lysate (60.1 kDa).
Lane 2: Non-transfected lysate.

 [Protocol Download](#)

Western Blot (Recombinant protein)

 [Protocol Download](#)

Sandwich ELISA (Recombinant protein)



Detection limit for recombinant GST tagged CSF1 is approximately 3ng/ml as a capture antibody.

 [Protocol Download](#)

ELISA

Gene Information

Entrez GeneID: [1435](#)

GeneBank [BC021117](#)

Accession#:

Protein [AAH21117](#)

Accession#:

Gene Name: CSF1

Gene Alias: MCSF, MGC31930

Gene Description: colony stimulating factor 1 (macrophage)

Omim ID: [120420](#)

Gene Ontology: [Hyperlink](#)

Gene Summary: The protein encoded by this gene is a cytokine that controls the production, differentiation, and function of macrophages. The active

form of the protein is found extracellularly as a disulfide-linked homodimer, and is thought to be produced by proteolytic cleavage of membrane-bound precursors. The encoded protein may be involved in development of the placenta. Four transcript variants encoding three different isoforms have been found for this gene. [provided by RefSeq

Other OTTHUMP00000013362,OTTHUMP00000013363,OTTHUMP00000013364,
Designations: colony stimulating factor 1,macrophage colony stimulating factor

Gene Pathway

[Cytokine-cytokine receptor interaction](#) [Hematopoietic cell lineage](#)

Related Disease

[Alzheimer Disease](#) [Alzheimer disease](#) [Cardiovascular Diseases](#) [Chorioamnionitis](#)
[Coronary Artery Disease](#) [Diabetes Mellitus, Type 2](#) [Edema](#)
[Fetal Membranes, Premature Rupture](#) [Genetic Predisposition to Disease](#) [Inflammation](#)
[Kidney Failure, Chronic](#) [Neoplasms](#) [Obstetric Labor, Premature](#) [Osteitis Deformans](#)
[Ovarian Neoplasms](#) [Periodontitis](#) [Pre-Eclampsia](#) [Premature Birth](#)

[服務條款](#) | [隱私權政策](#) | [著作及商標](#) | [網站地圖](#)

©2016 亞諾法生技股份有限公司 Abnova Corporation. 版權所有.