



SZABO SCANDIC

Part of Europa Biosite

Produktinformation



Forschungsprodukte & Biochemikalien



Zellkultur & Verbrauchsmaterial



Diagnostik & molekulare Diagnostik



Laborgeräte & Service

Weitere Information auf den folgenden Seiten!
See the following pages for more information!



Lieferung & Zahlungsart

siehe unsere [Liefer- und Versandbedingungen](#)

Zuschläge

- Mindermengenzuschlag
- Trockeneiszuschlag
- Gefahrgutzuschlag
- Expressversand

SZABO-SCANDIC HandelsgmbH

Quellenstraße 110, A-1100 Wien

T. +43(0)1 489 3961-0

F. +43(0)1 489 3961-7

mail@szabo-scandic.com

www.szabo-scandic.com

[linkedin.com/company/szaboscandic](https://www.linkedin.com/company/szaboscandic) 

CSF1R monoclonal antibody (M01), clone 1G4

Catalog # : H00001436-M01

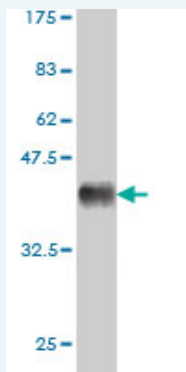
規格 : [100 ug]

[List All](#)

Specification

Product Description:	Mouse monoclonal antibody raised against a partial recombinant CSF1R.
Immunogen:	CSF1R (AAH47521, 21 a.a. ~ 120 a.a) partial recombinant protein with GST tag. MW of the GST tag alone is 26 KDa.
Sequence:	PVIEPSVPELVKPGATVTLRCVGNNGSVEWDGPPSPHWTLYSDGSSSILSTNNATFQNTGTYRCTEPGDPLGGSAAIHLYVKDPPARPWNVLAQEVVWFED
Host:	Mouse
Reactivity:	Human
Isotype:	IgG1 Kappa

Quality Control Testing: Antibody Reactive Against Recombinant Protein.



Western Blot detection against Immunogen (36.63 KDa) .

Storage Buffer: In 1x PBS, pH 7.4

Storage Instruction: Store at -20°C or lower. Aliquot to avoid repeated freezing and thawing.

MSDS: [Download](#)

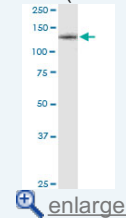
Datasheet: [Download](#)

Applications

Western Blot (Tissue lysate)

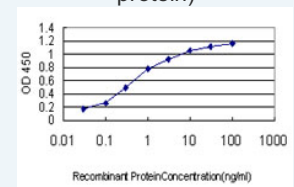
Application Image

Western Blot (Tissue lysate)



Western Blot (Recombinant protein)

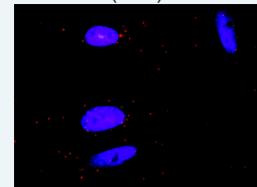
Sandwich ELISA (Recombinant protein)



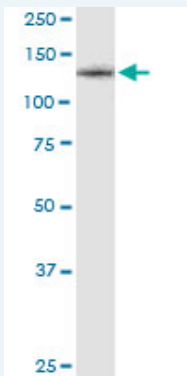
[enlarge](#)

ELISA

In situ Proximity Ligation Assay (Cell)



[enlarge](#)



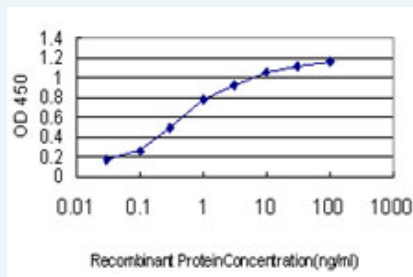
CSF1R monoclonal antibody (M01), clone 1G4. Western Blot analysis of CSF1R expression in human colon.

[Protocol Download](#)

Western Blot (Recombinant protein)

[Protocol Download](#)

Sandwich ELISA (Recombinant protein)

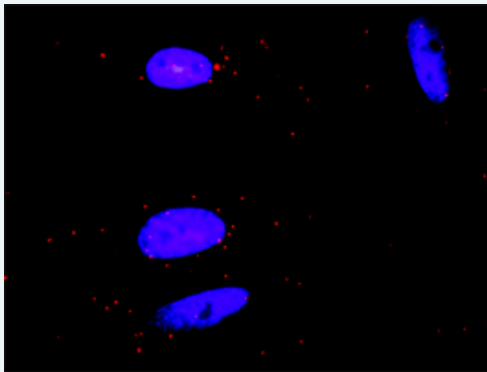


Detection limit for recombinant GST tagged CSF1R is approximately 0.03ng/ml as a capture antibody.

[Protocol Download](#)

ELISA

In situ Proximity Ligation Assay (Cell)



Proximity Ligation Analysis of protein-protein interactions between GRAP2 and CSF1R. HeLa cells were stained with anti-GRAP2 rabbit purified polyclonal 1:1200 and anti-CSF1R mouse monoclonal antibody 1:50. Each red dot represents the detection of protein-protein interaction complex, and nuclei were counterstained with DAPI (blue).

Gene Information

Entrez GeneID: [1436](#)

GeneBank [BC047521](#)
Accession#:

Protein [AAH47521](#)
Accession#:

Gene Name: CSF1R

Gene Alias: C-FMS,CD115,CSFR,FIM2,FMS

Gene Description: colony stimulating factor 1 receptor

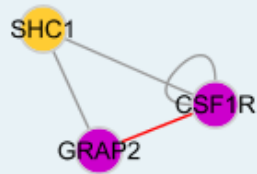
Omim ID: [164770](#)

Gene Ontology: [Hyperlink](#)

Gene Summary: The protein encoded by this gene is the receptor for colony stimulating factor 1, a cytokine which controls the production, differentiation, and function of macrophages. This receptor mediates most if not all of the biological effects of this cytokine. Ligand binding activates the receptor kinase through a process of oligomerization and transphosphorylation. The encoded protein is a tyrosine kinase transmembrane receptor and member of the CSF1/PDGF receptor family of tyrosine-protein kinases. Mutations in this gene have been associated with a predisposition to myeloid malignancy. The first intron of this gene contains a transcriptionally inactive ribosomal protein L7 processed pseudogene oriented in the opposite direction. [provided by RefSeq]

Other Designations: CD115 antigen,FMS proto-oncogene,McDonough feline sarcoma viral (v-fms) oncogene homolog,macrophage colony stimulating factor I receptor,soluble CSF1R variant 1

Interactome



Gene Pathway

[Cytokine-cytokine receptor interaction](#) [Endocytosis](#) [Hematopoietic cell lineage](#)
[Pathways in cancer](#)

Related Disease

[Asthma](#) [Crohn's disease](#) [Genetic Predisposition to Disease](#) [Heart Defects, Congenital](#)
[Lung Neoplasms](#) [Myelodysplastic Syndromes](#) [Pancreatic cancer](#) [Pancreatic Neoplasms](#)
[Pulmonary Disease, Chronic Obstructive](#) [Purpura, Thrombocytopenic, Idiopathic](#)
[Tobacco Use Disorder](#) [Urinary Bladder Neoplasms](#) [Werner syndrome](#)