



SZABO SCANDIC

Part of Europa Biosite

Produktinformation



Forschungsprodukte & Biochemikalien



Zellkultur & Verbrauchsmaterial



Diagnostik & molekulare Diagnostik



Laborgeräte & Service

Weitere Information auf den folgenden Seiten!
See the following pages for more information!



Lieferung & Zahlungsart

siehe unsere [Liefer- und Versandbedingungen](#)

Zuschläge

- Mindermengenzuschlag
- Trockeneiszuschlag
- Gefahrgutzuschlag
- Expressversand

SZABO-SCANDIC HandelsgmbH

Quellenstraße 110, A-1100 Wien

T. +43(0)1 489 3961-0

F. +43(0)1 489 3961-7

mail@szabo-scandic.com

www.szabo-scandic.com

[linkedin.com/company/szaboscandic](https://www.linkedin.com/company/szaboscandic) 


CSF2 purified MaxPab mouse polyclonal antibody (B01P) MaxPab®

Catalog # : H00001437-B01P

規格 : [50 ug]

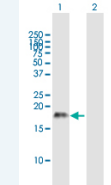
[List All](#)


Specification

Product Description:	Mouse polyclonal antibody raised against a full-length human CSF2 protein.
Immunogen:	CSF2 (AA114000.1, 1 a.a. ~ 144 a.a) full-length human protein.
Sequence:	MWLQSLLLLGTVACISAPARSPSPSTQPWEHVNAIQEARRLLNLSRDT AAEMNETVEISEMFDLQEPTCLQTRLELYKQGLRGSLTKLKGPLTMMMA SHYKQHCPPTPETSCATQIITFESFKENLKDFLLVIPFDCWEPVQE
Host:	Mouse
Reactivity:	Human
Quality Control Testing:	Antibody reactive against mammalian transfected lysate.
Storage Buffer:	In 1x PBS, pH 7.4
Storage Instruction:	Store at -20°C or lower. Aliquot to avoid repeated freezing and thawing.
Datasheet:	 Download

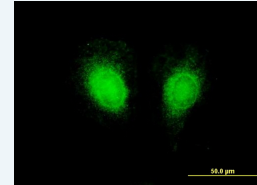
Application Image


Western Blot (Transfected lysate)



 [enlarge](#)

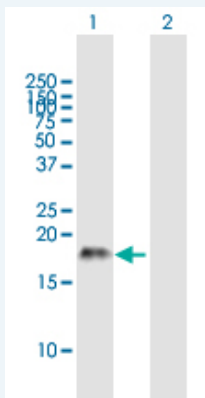
Immunofluorescence



 [enlarge](#)

Applications

Western Blot (Transfected lysate)

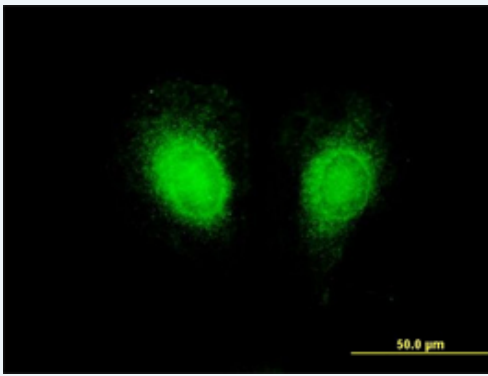


Western Blot analysis of CSF2 expression in transfected 293T cell line ([H00001437-T01](#)) by CSF2 MaxPab polyclonal antibody.

Lane 1: CSF2 transfected lysate (15.84 kDa).
Lane 2: Non-transfected lysate.

 [Protocol Download](#)

Immunofluorescence



[enlarge this image](#)

Immunofluorescence of purified MaxPab antibody to CSF2 on HeLa cell. [antibody concentration 10 ug/ml]

 [Protocol Download](#)

Gene Information

Entrez GeneID: [1437](#)

GeneBank [BC113999.1](#)

Accession#:

Protein [AAI14000.1](#)

Accession#:

Gene Name: CSF2

Gene Alias: GMCSF,MGC131935,MGC138897

Gene colony stimulating factor 2 (granulocyte-macrophage)

Description:

Omim ID: [138960](#)

Gene Ontology: [Hyperlink](#)

Gene Summary: The protein encoded by this gene is a cytokine that controls the production, differentiation, and function of granulocytes and macrophages. The active form of the protein is found extracellularly as a homodimer. This gene has been localized to a cluster of related genes at chromosome region 5q31, which is known to be associated with interstitial deletions in the 5q- syndrome and acute myelogenous leukemia. Other genes in the cluster include those encoding interleukins 4, 5, and 13. [provided by RefSeq]

Other colony stimulating factor 2,granulocyte-macrophage colony stimulating
Designations: factor,molgramostin,sargramostim

Gene Pathway

[Cytokine-cytokine receptor interaction](#) [Fc epsilon RI signaling pathway](#)
[Hematopoietic cell lineage](#) [Jak-STAT signaling pathway](#)
[Natural killer cell mediated cytotoxicity](#) [T cell receptor signaling pathway](#)

Related Disease

[Alzheimer Disease](#) [Alzheimer disease](#) [Asthma](#) [Asthma](#) [Atherosclerosis](#) [Blindness](#)
[Brain Ischemia](#) [Bronchial Hyperreactivity](#) [Bronchiolitis](#), [Viral](#)
[Carcinoma](#), [Non-Small-Cell Lung](#) [Cardiovascular Diseases](#) [Chlamydia Infections](#)
[Chorioamnionitis](#) [Coronary Artery Disease](#) [Coronary Disease](#) [Dermatitis](#), [Atopic](#)
[Diabetes Complications](#) [Diabetes Mellitus](#), [Type 2](#) [Edema](#)

... see more

