



# SZABO SCANDIC

Part of Europa Biosite

## Produktinformation



Forschungsprodukte & Biochemikalien



Zellkultur & Verbrauchsmaterial



Diagnostik & molekulare Diagnostik



Laborgeräte & Service

Weitere Information auf den folgenden Seiten!  
See the following pages for more information!



### Lieferung & Zahlungsart

siehe unsere [Liefer- und Versandbedingungen](#)

### Zuschläge

- Mindermengenzuschlag
- Trockeneiszuschlag
- Gefahrgutzuschlag
- Expressversand

### SZABO-SCANDIC HandelsgmbH

Quellenstraße 110, A-1100 Wien

T. +43(0)1 489 3961-0

F. +43(0)1 489 3961-7

[mail@szabo-scandic.com](mailto:mail@szabo-scandic.com)

[www.szabo-scandic.com](http://www.szabo-scandic.com)

[linkedin.com/company/szaboscandic](https://www.linkedin.com/company/szaboscandic) 



## CSF2 purified MaxPab rabbit polyclonal antibody (D01P) MaxPab®

Catalog # : H00001437-D01P

規格 : [ 100 ug ]

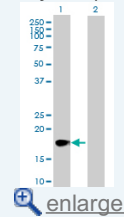
[List All](#)

### Specification

<b>Product Description:</b>	Rabbit polyclonal antibody raised against a full-length human CSF2 protein.
<b>Immunogen:</b>	CSF2 (AA114000.1, 1 a.a. ~ 144 a.a) full-length human protein.
<b>Sequence:</b>	MWLQSLLLLGTVACISAPARSPSPSTQPWEHVNAIQEARRLLNLSRDT AAEMNETVEISEMFDLQEPTCLQTRLELYKQGLRGSLTKLKGPLTMMA SHYKQHCPPTPETSCATQIITFESFKENLKDFLLVIPFDCWEPVQE
<b>Host:</b>	Rabbit
<b>Reactivity:</b>	Human
<b>Quality Control Testing:</b>	Antibody reactive against mammalian transfected lysate.
<b>Storage Buffer:</b>	In 1x PBS, pH 7.4
<b>Storage Instruction:</b>	Store at -20°C or lower. Aliquot to avoid repeated freezing and thawing.
<b>MSDS:</b>	 <a href="#">Download</a>
<b>Datasheet:</b>	 <a href="#">Download</a>

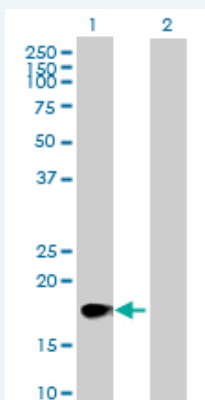
### Application Image

Western Blot (Transfected lysate)



### Applications

#### Western Blot (Transfected lysate)



Western Blot analysis of CSF2 expression in transfected 293T cell line ([H00001437-T01](#)) by CSF2 MaxPab polyclonal antibody.

Lane 1: CSF2 transfected lysate (16.30 kDa).  
Lane 2: Non-transfected lysate.

 [Protocol Download](#)

### Gene Information

Entrez GeneID: [1437](#)

**GeneBank** [NM\\_000758](#)

**Accession#:**

**Protein** [AAI14000.1](#)

**Accession#:**

**Gene Name:** CSF2

**Gene Alias:** GMCSF,MGC131935,MGC138897

**Gene** colony stimulating factor 2 (granulocyte-macrophage)

**Description:**

**Omim ID:** [138960](#)

**Gene Ontology:** [Hyperlink](#)

**Gene Summary:** The protein encoded by this gene is a cytokine that controls the production, differentiation, and function of granulocytes and macrophages. The active form of the protein is found extracellularly as a homodimer. This gene has been localized to a cluster of related genes at chromosome region 5q31, which is known to be associated with interstitial deletions in the 5q- syndrome and acute myelogenous leukemia. Other genes in the cluster include those encoding interleukins 4, 5, and 13. [provided by RefSeq]

**Other** colony stimulating factor 2,granulocyte-macrophage colony stimulating  
**Designations:** factor,molgramostin,sargramostim

#### Gene Pathway

[Cytokine-cytokine receptor interaction](#) [Fc epsilon RI signaling pathway](#)  
[Hematopoietic cell lineage](#) [Jak-STAT signaling pathway](#)  
[Natural killer cell mediated cytotoxicity](#) [T cell receptor signaling pathway](#)

#### Related Disease

[Alzheimer Disease](#) [Alzheimer disease](#) [Asthma](#) [Asthma](#) [Atherosclerosis](#) [Blindness](#)  
[Brain Ischemia](#) [Bronchial Hyperreactivity](#) [Bronchiolitis](#), [Viral](#)  
[Carcinoma, Non-Small-Cell Lung](#) [Cardiovascular Diseases](#) [Chlamydia Infections](#)  
[Chorioamnionitis](#) [Coronary Artery Disease](#) [Coronary Disease](#) [Dermatitis, Atopic](#)  
[Diabetes Complications](#) [Diabetes Mellitus, Type 2](#) [Edema](#)

... see more

[服務條款](#) | [隱私權政策](#) | [著作及商標](#) | [網站地圖](#)

©2016 亞諾法生技股份有限公司 Abnova Corporation. 版權所有.