



# SZABO SCANDIC

Part of Europa Biosite

## Produktinformation



Forschungsprodukte & Biochemikalien



Zellkultur & Verbrauchsmaterial



Diagnostik & molekulare Diagnostik



Laborgeräte & Service

Weitere Information auf den folgenden Seiten!  
See the following pages for more information!



### Lieferung & Zahlungsart

siehe unsere [Liefer- und Versandbedingungen](#)

### Zuschläge

- Mindermengenzuschlag
- Trockeneiszuschlag
- Gefahrgutzuschlag
- Expressversand

### SZABO-SCANDIC HandelsgmbH

Quellenstraße 110, A-1100 Wien

T. +43(0)1 489 3961-0

F. +43(0)1 489 3961-7

[mail@szabo-scandic.com](mailto:mail@szabo-scandic.com)

[www.szabo-scandic.com](http://www.szabo-scandic.com)

[linkedin.com/company/szaboscandic](https://www.linkedin.com/company/szaboscandic) 

## CSF2 monoclonal antibody (M06), clone 2A8

Catalog # : H00001437-M06

規格 : [ 100 ug ]

List All

### Specification

**Product Description:** Mouse monoclonal antibody raised against a partial recombinant CSF2.

**Immunogen:** CSF2 (NP\_000749, 17 a.a. ~ 144 a.a) partial recombinant protein.

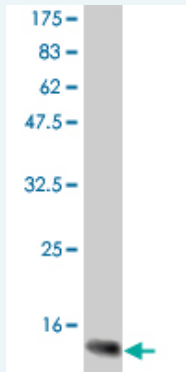
**Sequence:** MAPARSPSPSTQPWEHVNAIQEARRLLNLSRDAAEMNETVEVISEMFD  
LQEPTCLQTRLELYKQGLRGSLTKLKGPLTMMASHYKQHCPTPETSC  
ATQIITFESFKENLKDFLLVIPFDCWEPVQE

**Host:** Mouse

**Reactivity:** Human

**Isotype:** IgG2a Kappa

**Quality Control Testing:** Antibody Reactive Against Recombinant Protein.



Western Blot detection against Immunogen (14 KDa) .

**Storage Buffer:** In 1x PBS, pH 7.4

**Storage Instruction:** Store at -20°C or lower. Aliquot to avoid repeated freezing and thawing.

**MSDS:** [Download](#)

**Datasheet:** [Download](#)

### Applications

**Western Blot (Recombinant protein)**

[Protocol Download](#)

**ELISA**

### Gene Information

**Entrez GeneID:** [1437](#)

**GeneBank** [N/A](#)

### Application Image

Western Blot (Recombinant protein)

ELISA

**Accession#:****Protein** =**Accession#:****Gene Name:** CSF2**Gene Alias:** GMCSF,MGC131935,MGC138897**Gene Description:** colony stimulating factor 2 (granulocyte-macrophage)**Omim ID:** [138960](#)**Gene Ontology:** [Hyperlink](#)

**Gene Summary:** The protein encoded by this gene is a cytokine that controls the production, differentiation, and function of granulocytes and macrophages. The active form of the protein is found extracellularly as a homodimer. This gene has been localized to a cluster of related genes at chromosome region 5q31, which is known to be associated with interstitial deletions in the 5q- syndrome and acute myelogenous leukemia. Other genes in the cluster include those encoding interleukins 4, 5, and 13. [provided by RefSeq]

**Other Designations:** colony stimulating factor 2,granulocyte-macrophage colony stimulating factor,molgramostin,sargramostim

**Gene Pathway**

[Cytokine-cytokine receptor interaction](#) [Fc epsilon RI signaling pathway](#)  
[Hematopoietic cell lineage](#) [Jak-STAT signaling pathway](#)  
[Natural killer cell mediated cytotoxicity](#) [T cell receptor signaling pathway](#)

**Related Disease**

[Alzheimer Disease](#) [Alzheimer disease](#) [Asthma](#) [Asthma](#) [Atherosclerosis](#) [Blindness](#)  
[Brain Ischemia](#) [Bronchial Hyperreactivity](#) [Bronchiolitis](#), [Viral](#)  
[Carcinoma, Non-Small-Cell Lung](#) [Cardiovascular Diseases](#) [Chlamydia Infections](#)  
[Chorioamnionitis](#) [Coronary Artery Disease](#) [Coronary Disease](#) [Dermatitis, Atopic](#)  
[Diabetes Complications](#) [Diabetes Mellitus, Type 2](#) [Edema](#)

... see more