



# SZABO SCANDIC

Part of Europa Biosite

## Produktinformation



Forschungsprodukte & Biochemikalien



Zellkultur & Verbrauchsmaterial



Diagnostik & molekulare Diagnostik



Laborgeräte & Service

Weitere Information auf den folgenden Seiten!  
See the following pages for more information!



### Lieferung & Zahlungsart

siehe unsere [Liefer- und Versandbedingungen](#)

### Zuschläge

- Mindermengenzuschlag
- Trockeneiszuschlag
- Gefahrgutzuschlag
- Expressversand

### SZABO-SCANDIC HandelsgmbH

Quellenstraße 110, A-1100 Wien

T. +43(0)1 489 3961-0

F. +43(0)1 489 3961-7

[mail@szabo-scandic.com](mailto:mail@szabo-scandic.com)

[www.szabo-scandic.com](http://www.szabo-scandic.com)

[linkedin.com/company/szaboscandic](https://www.linkedin.com/company/szaboscandic) 

**CSF2RA purified MaxPab mouse polyclonal antibody (B01P)** MaxPab®

Catalog # : H00001438-B01P

規格 : [ 50 ug ]

List All

**Specification**

**Product Description:** Mouse polyclonal antibody raised against a full-length human CSF2RA protein.

**Immunogen:** CSF2RA (NP\_006131.2, 1 a.a. ~ 400 a.a) full-length human protein.

**Sequence:**  
 MLLLVTSLLLCELPHPAFLLIPEKSDLRTVAPASSLNVRFDSTMNLSWD  
 CQENTTFSKCFLTDKKNRVVEPRLSNNECSCTFREICLHEGVTFEVHVNT  
 SQRGFQQKLLYPNSGREGTAAQNFSCFIYNADLMNCTWARGPTAPRDV  
 QYFLYIRNSKRRREIRCPYYIQDSGTHVGCGLDNL SGLTSRNYFLVNGTS  
 REIGIQFFDSLDDTKKIERFNPPSNVTVRCNTTHCLVRWKQPRTYQKLSY  
 LDFQYQLDVHRKNTQPGTENLLINVSGDLENRYNFPSSSEPRAKHSVKIRA  
 ADVRILNWSSWSEAIEFGSDDGNLGSVYIYVLLIVGTLVCGMLGFLFKRF  
 LRIQRLFPPVPQIKDKLNDNHEVEDEIIEWEFTPEEGKGYREEVLTVKEIT

**Host:** Mouse

**Reactivity:** Human

**Quality Control Testing:** Antibody reactive against mammalian transfected lysate.

**Storage Buffer:** In 1x PBS, pH 7.4

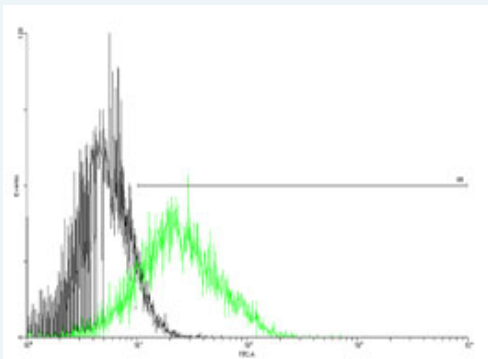
**Storage Instruction:** Store at -20°C or lower. Aliquot to avoid repeated freezing and thawing.

**MSDS:**  [Download](#)

**Datasheet:**  [Download](#)

**Applications**

**Flow Cytometry**



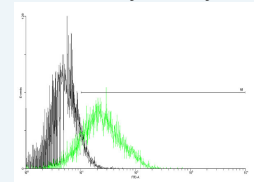
 enlarge this image


FACS analysis of negative control 293 cells (Black) and CSF2RA expressing 293 cells (Green) using CSF2RA purified MaxPab mouse polyclonal antibody.

**Western Blot (Transfected lysate)**

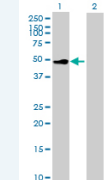
**Application Image**


**Flow Cytometry**

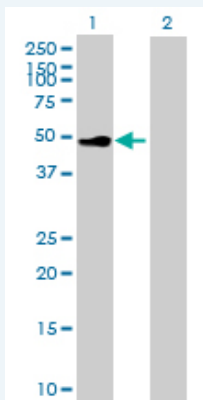


 enlarge

**Western Blot (Transfected lysate)**



 enlarge



Western Blot analysis of CSF2RA expression in transfectant 293T cell line ([H00001438-T01](#)) by CSF2RA MaxPab polyclonal antibody.

Lane 1: CSF2RA transfected lysate(44 KDa).  
Lane 2: Non-transfected lysate.

 [Protocol Download](#)

## Gene Information

**Entrez GeneID:** [1438](#)

**GeneBank Accession#:** [NM\\_006140](#)

**Protein Accession#:** [NP\\_006131.2](#)

**Gene Name:** CSF2RA

**Gene Alias:** CD116,CDw116,CSF2R,CSF2RAX,CSF2RAY,CSF2RX,CSF2RY,GM-CSF-R-alpha,GMCSFR,GMR,MGC3848,MGC4838

**Gene Description:** colony stimulating factor 2 receptor, alpha, low-affinity (granulocyte-macrophage)

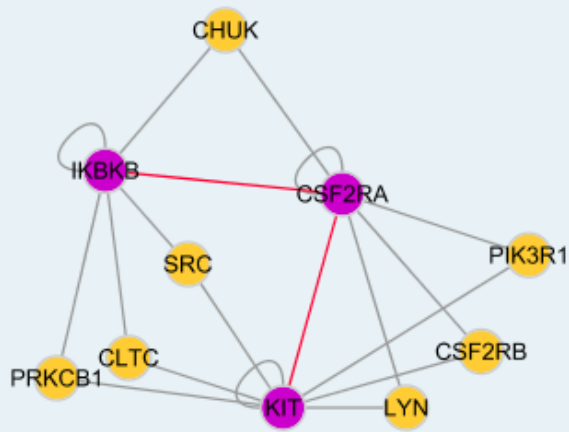
**Omim ID:** [306250](#), [425000](#)

**Gene Ontology:** [Hyperlink](#)

**Gene Summary:** The protein encoded by this gene is the alpha subunit of the heterodimeric receptor for colony stimulating factor 2, a cytokine which controls the production, differentiation, and function of granulocytes and macrophages. The encoded protein is a member of the cytokine family of receptors. This gene is found in the pseudoautosomal region (PAR) of the X and Y chromosomes. Multiple transcript variants encoding different isoforms have been found for this gene, with some of the isoforms being membrane-bound and others being soluble. [provided by RefSeq]

**Other Designations:** CD116 antigen,GM-CSF receptor alpha subunit,OTTHUMP00000014504,OTTHUMP00000014505,OTTHUMP00000014917,OTTHUMP00000014918,colony stimulating factor 2 receptor alpha chain,colony stimulating factor 2 receptor alpha subunit,granulocyte-macrophage colony-stimu

## Interactome



### Gene Pathway

[Cytokine-cytokine receptor interaction](#) [Hematopoietic cell lineage](#)  
[Jak-STAT signaling pathway](#) [Pathways in cancer](#)

### Related Disease

[Genetic Predisposition to Disease](#) [Schizophrenia](#) [Schizophrenia](#)

[服務條款](#) | [隱私權政策](#) | [著作及商標](#) | [網站地圖](#)

©2016 亞諾法生技股份有限公司 Abnova Corporation. 版權所有.