



SZABO SCANDIC

Part of Europa Biosite

Produktinformation



Forschungsprodukte & Biochemikalien



Zellkultur & Verbrauchsmaterial



Diagnostik & molekulare Diagnostik



Laborgeräte & Service

Weitere Information auf den folgenden Seiten!
See the following pages for more information!



Lieferung & Zahlungsart

siehe unsere [Liefer- und Versandbedingungen](#)

Zuschläge

- Mindermengenzuschlag
- Trockeneiszuschlag
- Gefahrgutzuschlag
- Expressversand

SZABO-SCANDIC HandelsgmbH

Quellenstraße 110, A-1100 Wien

T. +43(0)1 489 3961-0

F. +43(0)1 489 3961-7

mail@szabo-scandic.com

www.szabo-scandic.com

[linkedin.com/company/szaboscandic](https://www.linkedin.com/company/szaboscandic) 

CSF2RA monoclonal antibody (M03), clone 2G5

Catalog # : H00001438-M03

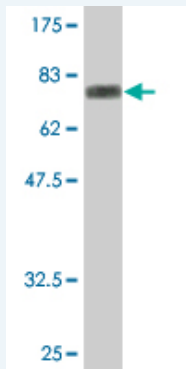
規格 : [100 ug]

[List All](#)

Specification

Product Description:	Mouse monoclonal antibody raised against a full-length recombinant CSF2RA.
Immunogen:	CSF2RA (AAH02635.1, 1 a.a. ~ 400 a.a) full-length recombinant protein with GST tag. MW of the GST tag alone is 26 KDa.
Sequence:	MLLLVTSLLLCELPHPAFLLIPEKSDLRTVAPASSLNVRFDSTMTNLSWD CQENTTFSKCFLTDKKNRWVEPRLSNECSCTFREICLHEGVTFEVHVNT SQRGFQQKLLYPNSGREGTAAQNFSCFIYNADLMNCTWARGPTAPRDV QYFLYIRNSKRREIRCPYYIQDSGTHVGCILDNLGSLTSRNYFLVNGTS REIGIQFFDSDLDTKKIERFNPPSNVTVRCNTTHCLVRWKQPRTYQKLSY LDFQYQLDVHRKNTQPGTENLLINVSGDLENRYNFPSPSEPRAKHSVKIRA ADVRLNWSSWSEAIIEFGSDDGNLGSVYYVLLIMGTLVCGMLGFLFKRF LRIQRLFPVPQIKDKLNDNHEVEDEIWEFEFTPEEGKGYREEVLTVKEIT
Host:	Mouse
Reactivity:	Human
Isotype:	IgG2a Kappa

Quality Control Testing: Antibody Reactive Against Recombinant Protein.



Western Blot detection against Immunogen (69.74 KDa) .

Storage Buffer: In 1x PBS, pH 7.4

Storage Instruction: Store at -20°C or lower. Aliquot to avoid repeated freezing and thawing.

MSDS: [Download](#)

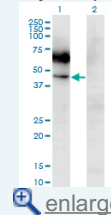
Datasheet: [Download](#)

Applications

Western Blot (Transfected lysate)

Application Image

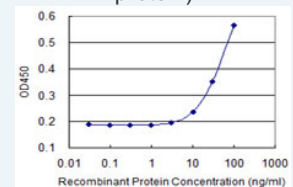
Western Blot (Transfected lysate)



[enlarge](#)

Western Blot (Recombinant protein)

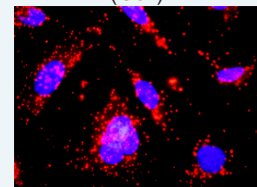
Sandwich ELISA (Recombinant protein)



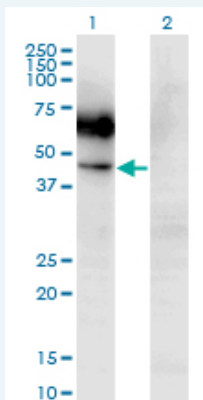
[enlarge](#)

ELISA

In situ Proximity Ligation Assay (Cell)



[enlarge](#)



Western Blot analysis of CSF2RA expression in transfected 293T cell line by CSF2RA monoclonal antibody (M03), clone 2G5.

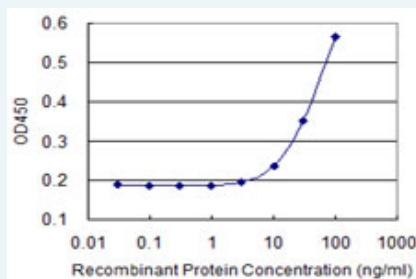
Lane 1: CSF2RA transfected lysate(46.2 KDa).
Lane 2: Non-transfected lysate.

[Protocol Download](#)

Western Blot (Recombinant protein)

[Protocol Download](#)

Sandwich ELISA (Recombinant protein)

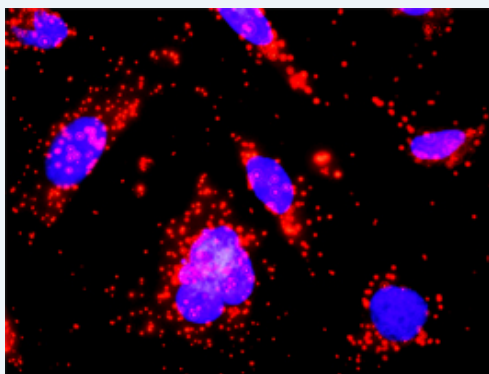


Detection limit for recombinant GST tagged CSF2RA is 3 ng/ml as a capture antibody.

[Protocol Download](#)

ELISA

In situ Proximity Ligation Assay (Cell)



Proximity Ligation Analysis of protein-protein interactions between KIT and CSF2RA. HeLa cells were stained with anti-KIT rabbit purified polyclonal 1:1200 and anti-CSF2RA mouse monoclonal antibody 1:50. Each red dot represents the detection of protein-protein interaction complex, and nuclei were counterstained with DAPI (blue).

Gene Information

Entrez GeneID: [1438](#)

GeneBank [BC002635](#)
Accession#:

Protein [AAH02635.1](#)
Accession#:

Gene Name: CSF2RA

Gene Alias: CD116,CDw116,CSF2R,CSF2RAX,CSF2RAY,CSF2RX,CSF2RY,GM-CSF-R-alpha,GMCSFR,GMR,MGC3848,MGC4838

Gene Description: colony stimulating factor 2 receptor, alpha, low-affinity (granulocyte-macrophage)

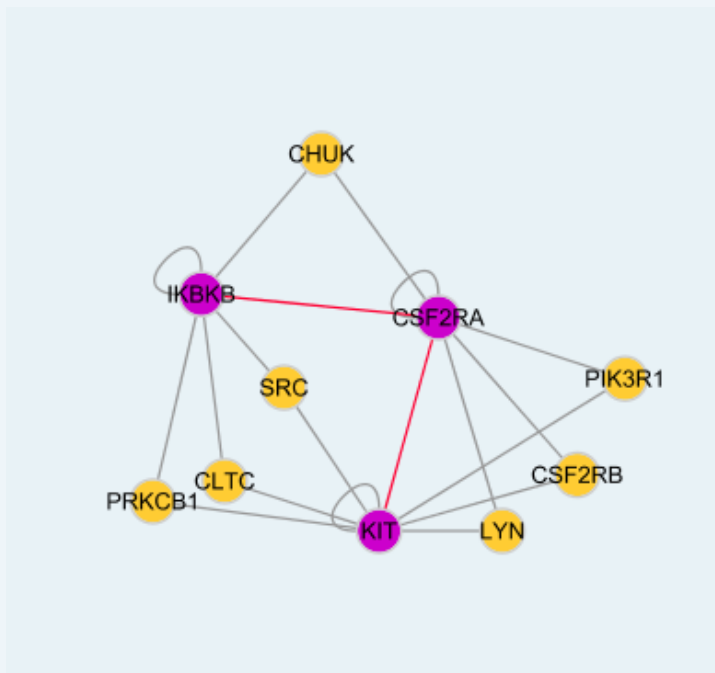
Omim ID: [306250](#), [425000](#)

Gene Ontology: [Hyperlink](#)

Gene Summary: The protein encoded by this gene is the alpha subunit of the heterodimeric receptor for colony stimulating factor 2, a cytokine which controls the production, differentiation, and function of granulocytes and macrophages. The encoded protein is a member of the cytokine family of receptors. This gene is found in the pseudoautosomal region (PAR) of the X and Y chromosomes. Multiple transcript variants encoding different isoforms have been found for this gene, with some of the isoforms being membrane-bound and others being soluble. [provided by RefSeq]

Other Designations: CD116 antigen,GM-CSF receptor alpha subunit,OTTHUMP00000014504,OTTHUMP00000014505,OTTHUMP0000014917,OTTHUMP00000014918,colony stimulating factor 2 receptor alpha chain,colony stimulating factor 2 receptor alpha subunit,granulocyte-macrophage colony-stimu

Interactome



Gene Pathway

[Cytokine-cytokine receptor interaction Hematopoietic cell lineage](#)
[Jak-STAT signaling pathway Pathways in cancer](#)

Related Disease

[Genetic Predisposition to Disease Schizophrenia Schizophrenia](#)