



# SZABO SCANDIC

Part of Europa Biosite

## Produktinformation



Forschungsprodukte & Biochemikalien



Zellkultur & Verbrauchsmaterial



Diagnostik & molekulare Diagnostik



Laborgeräte & Service

Weitere Information auf den folgenden Seiten!  
See the following pages for more information!



### Lieferung & Zahlungsart

siehe unsere [Liefer- und Versandbedingungen](#)

### Zuschläge

- Mindermengenzuschlag
- Trockeneiszuschlag
- Gefahrgutzuschlag
- Expressversand

### SZABO-SCANDIC HandelsgmbH

Quellenstraße 110, A-1100 Wien

T. +43(0)1 489 3961-0

F. +43(0)1 489 3961-7

[mail@szabo-scandic.com](mailto:mail@szabo-scandic.com)

[www.szabo-scandic.com](http://www.szabo-scandic.com)

[linkedin.com/company/szaboscandic](https://www.linkedin.com/company/szaboscandic) 

**CSF2RB purified MaxPab mouse polyclonal antibody (B01P)** MaxPab®

Catalog # : H00001439-B01P

規格 : [ 50 ug ]

[List All](#)

**Specification**

**Product Description:** Mouse polyclonal antibody raised against a full-length human CSF2RB protein.

**Immunogen:** CSF2RB (AAH70085.1, 1 a.a. ~ 889 a.a) full-length human protein.

**Sequence:**  
 MVLAQGLLSMALLALCWERSLAGAEETIPLQTLRCYNDYTSHTCRWAD  
 TQDAQRLVNVTLIRRVEDLLEPVSCDLSDMPWSACPHPRCVPRRCVI  
 PCQSFVVTDVDFYFSFQDRPLGTRLTVTLTQHVQPPEPRDLQISTDQD  
 HFLLTWSVALGSPQSHWLSPGDLEFEVVYKRLQDSWEDAAILLSNTSQA  
 TLGPEHLMPSSTYVARVRTRLAPGSRLSGRPSKWSPEVCWDSQPGDE  
 AQPQNLECFDGAAVLSCSWEVRKEVASSVSFGLFYKPSPDAGEEECS  
 PVLREGLGSLHTRHHCQIPVDPATHGQYIVSVQPRRAEKHIKSSVNIQMA  
 PPSLNVTKDGDSYSLRWETMKMRYEHIDHTFEIQYRKDTATWKDSKTET  
 LQNAHSMALPALEPSTRYWARVRVRTSRTGYNGIWSEWSEARSWDTES  
 VLPMMWLALMIFLTIAVLLALRF CGIYGYRLRRK WEEKIPNPSKSHLFQNG  
 SAELWPPGMSAFTSGSPPHQGPWGSRFPELEGVFPVGF GDSEVSPL  
 TIEDPKHVCDPPSGPDTPAASDLPT EQPPSPQGPAAASHTPEKQASS  
 FDFNGPYLGPPHSRSLPDILGQPEPPQEGGSQKSPPPGSLEYLCLPAG  
 GQVQLVPLAQAMGPGQAVEVERRPSQGAAGSPSLES GGGPAPPALGP  
 RVGGQDQKDS PVAIPMSSGDTEDPGVASGYVSSADLVFTPN SGASSVS  
 LVPSLGLPSDQTPSLCPGLASGPPGAPGPVKSGFEGYVELPPIEGRSPR  
 SPRNPNVPPEAKSPVLNPGERPADVSPSPQPEGLLVLQQVGDYCF LP  
 GLGPGPLSLRSKPSSPGPGPEIKNLDQAFQVKKPPGQAVPQVPVIQLFK  
 ALVSVMSVGPVP

**Host:** Mouse

**Reactivity:** Human

**Quality Control Testing:** Antibody reactive against mammalian transfected lysate.

**Storage Buffer:** In 1x PBS, pH 7.4

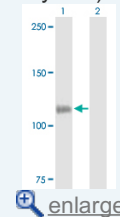
**Storage Instruction:** Store at -20°C or lower. Aliquot to avoid repeated freezing and thawing.

**MSDS:**  [Download](#)

**Datasheet:**  [Download](#)

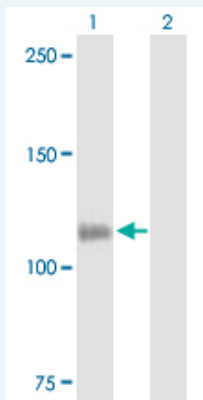
**Application Image**

Western Blot (Transfected lysate)



**Applications**

Western Blot (Transfected lysate)



Western Blot analysis of CSF2RB expression in transduced 293T cell line ([H00001439-T01](#)) by CSF2RB MaxPab polyclonal antibody.

Lane 1: CSF2RB transduced lysate(96.20 kDa).  
Lane 2: Non-transduced lysate.

Protocol Download

### Gene Information

**Entrez GeneID:** [1439](#)

**GeneBank Accession#:** [BC070085](#)

**Protein Accession#:** [AAH70085.1](#)

**Gene Name:** CSF2RB

**Gene Alias:** CD131,CDw131,IL3RB,IL5RB

**Gene Description:** colony stimulating factor 2 receptor, beta, low-affinity (granulocyte-macrophage)

**Omim ID:** [138981](#), [265120](#)

**Gene Ontology:** [Hyperlink](#)

**Gene Summary:** The protein encoded by this gene is the common beta chain of the high affinity receptor for IL-3, IL-5 and CSF. Defects in this gene have been reported to be associated with protein alveolar proteinosis (PAP).  
[provided by RefSeq]

**Other Designations:** GM-CSF/IL-3/IL-5 receptor common beta-chain,colony stimulating factor 2 receptor, beta,colony-stimulating factor-2 receptor, beta, low-affinity,cytokine receptor common subunit beta,interleukin 3 receptor/granulocyte-macrophage colony stimulating factor 3

### Gene Pathway

[Apoptosis](#) [Cytokine-cytokine receptor interaction](#) [Jak-STAT signaling pathway](#)

### Related Disease

[Asthma](#) [Asthma](#) [Bipolar Disorder](#) [Bronchial Hyperreactivity](#) [Cardiovascular Diseases](#)  
[Diabetes Mellitus, Type 2](#) [Edema](#) [Genetic Predisposition to Disease](#)  
[Hypersensitivity, Immediate](#) [Kidney Failure, Chronic](#) [Rhinitis, Allergic, Seasonal](#)  
[Schizophrenia](#) [Schizophrenia](#)

